

QUOTE
"One of the difficult
tasks in the world is to con-
vince a woman that even a
bargain costs money."
—E. W. Howe

The Chelsea Standard

25¢
per copy

ONE HUNDRED FIFTEENTH YEAR—No. 41

CHELSEA, MICHIGAN, WEDNESDAY, MARCH 12, 1986

22 Pages This Week



NAPOLEON RESIDENT Sue Ann Cowling was killed last Saturday night after she lost control of her automobile on M-52 and was hit broadside by an oncoming vehicle. Cowling was on her way to work at Chelsea Milling Co. Police said she might be alive today had she been wearing her seat belt.



RELATIVELY MINOR DAMAGE was sustained by this Oldsmobile driven by Eric R. Raby, of Norvell, when it hit a car broadside on M-52 last Saturday night. The driver of the other car, Sue Ann Cowling, was killed in the accident. Raby was treated and released at Chelsea Community Hospital. Police said that unlike Cowling, Raby was wearing a seat belt. Blood tests for alcohol or drug use by either driver were negative, police said.

Milling Co. Employee Dies Saturday in Crash on M-52

A Chelsea Milling Co. employee was killed last Saturday night after her car skidded out of control on an icy stretch of M-52 and was hit broadside by another vehicle traveling in the opposite direction.

Sue Ann Cowling, 31, of 324 Austin Rd., Napoleon, was pronounced dead at Chelsea Community Hospital at 11:53 p.m., an hour after the accident. The other driver, Eric Randall Raby, 25, of 204 Sweezy Lake Rd., Norvell, was not injured, according to the Washtenaw County Sheriff's Department.

Cowling was northbound on her way to work, according to Deputy Joseph Yekulis, when the accident occurred just north of Lehman Rd. He said Cowling's vehicle apparently began to leave the roadway to the right. When she tried to turn back onto the road, she lost control of her car, causing the vehicle to skid into the path of the southbound vehicle. Her car was struck on the passenger's side.

Yekulis said Cowling was not wearing a seat belt. However, he said Raby was wearing a seat

belt, which "probably prevented serious injuries."

Chelsea Fire Department was

called to the scene at 10:50 p.m. The "jaws of life," eventually had to be used to remove Cowling from her vehicle, Yekulis said.

'Wealth of Health' Day Underway

Health topics ranging from teen suicide to self hypnosis are being explored today at Chelsea High school at the second annual "Wealth of Health" day.

High school students are spending the morning attending the wide range of lectures given by Chelsea and Ann Arbor experts. Each student is attending three lectures of his or her choosing from among the 35 lectures offered. Topics cover almost any health topic you can think of, including substance abuse, exercise and fitness, careers in biomedical communications, sports nutrition, gun safety, and headaches and chronic pain, to name a few.

The purpose of the program is "to provide health information and health promotion activities to all 800 students in grades nine through 12," according to the Pat Kubany, director of public relations at Chelsea Community Hospital.

The lectures were planned and sponsored by Chelsea Community Hospital. Experts from

Chelsea Family Practice, University of Michigan, Ann Arbor Police Department, and Washtenaw County Sheriff's Department, and several area organizations are participating. The lectures are being offered in place of morning classes.

Michigan Week Mayor Exchange Pairings Drawn

Chelsea and Brighton officials will spend a day in each others towns on Mayor Exchange Day, Monday, May 19.

Communities of similar size were matched in random drawing in Lansing. Names were drawn by Grand Haven Mayor Marjorie A. Boon, Michigan Municipal League president; Lansing Mayor Terry McKane; Ernest C. Browne, Jr., president, Greater Michigan Foundation; and Hans Schuler, 1986 Michigan Week chairman.

Merkel, Boham, Bentley Named to Council, Sewer Plant Bonds Okayed

In one of the heaviest voter turnouts in Chelsea history, Jerry Satterthwaite was elected to a second consecutive two-year term as village president.

Satterthwaite topped former president Charles Ritter in the voting, 378-271, as a total of 668 village residents went to the polls on Monday, despite hard rain much of the late afternoon and evening.

Evidence of the substantial turnout came early as 60 residents had voted by 8 a.m., and nearly 300 by noon. Last year, only 100 people punched their ballots as every position was unopposed. Satterthwaite becomes the first mayor to serve more than one term since Don Wood from 1978-80.

The general obligation bond issue proposal for the planned \$4.7 million wastewater treatment plant also passed by a wide margin, 444-164, perhaps reflecting the heavy public relations effort put forth by the village council and other supporters in recent weeks.

Incumbent Joe Merkel, and political newcomers Phil Boham and Gary Bentley, were elected to two-year terms as village trustees. Merkel will begin his fourth term, while Boham and Bentley fill the seats vacated by Jim Finch and Mac Fulk, who decided not to seek re-election.

Merkel received the highest number of votes of any opposed candidate for any office, 399. Boham was second in the voting for trustees with 349 votes, and Bentley was third with 306 votes. Dennis Petach was not far behind in fourth place with 284 votes, followed by Rosemary Harrold with 275 votes, and Rick Morier with 150 votes.

Kathleen Chapman ousted William Storey from the village treasurer's spot, 361-267.

Running unopposed for McKune Memorial Library trustee positions were incumbents Daphne Hodder, with 506 votes, and Gary Zenz, with 164 votes.

There were no write in votes for the assessor's position.

"I'd like to thank all the people who worked so hard for my re-election," Satterthwaite said. "Of course, I'd also like to thank the people who voted for me. I guarantee I'll give the best possible government I can give."

Satterthwaite, 423 McKinley St., is the owner of J&M Oil Co. of Chelsea.

Merkel, 743 Taylor St., is owner of the Wolverine Food & Spirits.

Boham, 122 S. East St., is director of personnel at Chelsea Community hospital.

Bentley, 223 Harrison St., is a



President Jerry Satterthwaite



Trustee Joe Merkel



Trustee Phil Boham



Trustee Gary Bentley

Ex-Chelsea Resident Dies In Robbery

Thomas M. Schaff, 19, a former Chelsea resident, was shot and killed last Wednesday morning in an armed robbery in an Athens, Ga. convenience store.

Schaff was a clerk at the store, and was shot at 12:40 a.m. Two of Schaff's friends were also wounded.

According to Athens police, two men who are suspects in the crime match the descriptions of suspects in several other similar recent robberies in the area.

Schaff was born in Ann Arbor, and was the son of Fred and Paula Schaff, who moved to Athens in 1981. He graduated from Cedar Shoals High school last June.

He is survived by his parents, a brother, grandparents Fred and Mavis Schaff of Stockbridge.

Proposed Village Budget Approved

The general fund budget for the village of Chelsea was unanimously approved by the village council last week after a poorly attended public hearing.

The proposed budget falls just short of the \$1 million mark, at \$992,000. That's \$27,000 more than the 1985-86 amended budget, but \$2,051 short of what was actually spent.

As usual, the budget for the police department is the largest item in the budget, with proposed expenditures of \$280,000. Public works is next in line at \$196,000. The two departments taken together account for 46 percent of

the entire budget. "Other functions," which includes administrative salaries, among other items, accounts for \$162,200.

On the revenue side, money from real and personal property taxes is expected to account for \$429,000, up from \$410,211 actually collected last year. State shared taxes are projected to provide \$257,000, up from last year's revenues of \$239,972. Those two sources are expected to provide 69 percent of revenues.

Over-all, there were no dramatic changes in any budget item.



IT WAS A LONG DAY for village clerk Evelyn Rosentreter, left, and Vera Briston on Monday, as they, and many others, worked from 7 a.m. to 8 p.m. at the polls set up for the village election at Sylvan Town Hall. After the polls had closed,

Rosentreter had to take the ballots to the county courthouse for computer tabulation. She informed candidates and reporters of the results around 11 p.m.

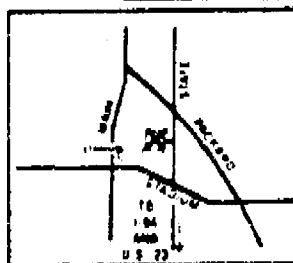
9TH ANNUAL
WAAW/AM 1600
NAC/SEMCA
1986 SPONSORS

75 STORES • EVERYTHING TO 50% OFF OR MORE

ANN ARBOR

SUPER SALE

SATURDAY 10 AM - 8 PM SUNDAY 11 AM - 5 PM



STATE STREET NEAR PACKARD

U OF M TRACK AND TENNIS BUILDING

FREE ADMISSION FREE PARKING

MARCH 15 - 16
SATURDAY 10 AM - 8 PM
SUNDAY 11 AM - 5 PM

SATELLITE DISHES FUTURE VISION SATELLITE SYSTEMS	CARPET BARN UP TO 50% OFF	HOT TUBS GREAT DEALS
ANSWERING MACHINES \$399.95	50% OFF PLANTS	KEY RINGS
GTE \$148.88	FUTONS all cotton Japanese beds evening star futons	ACCORDION
KOREAN KARATE THE ACADEMY MARTIAL ART SUPPLIES	AM/FM CASSETTE MANY BRANDS	MUCH MORE WRITING PRODUCTS LUGGAGE BEARS WARDrobe ORCHARD BIBELCLEAN

Hi Fly SAILBOARDS
COMPLETE RIGS \$299.00 UP

50% OFF
85 PRICES WHILE 104 LAST

FAMOUS NAME
WETSUITS
50% OFF LIST
MEN & WOMEN 200 TO SELL

NIKON MINOLTA CANON MORE

CAMERAS

50% OFF
LIST PRICES

TRADE-INS WELCOME

GOLF SALE

FREE CLUB FITTING. HITTING NET
MacGREGOR • IZOD
DUNLOP • ETONIC • FOOT-JOY
DIFINI • HOGAN • DEXTER
CLOTHES • CLUBS • GLOVES • SOCKS
JACKETS • BAGS • MORE

ALL
UP TO 50-70% OFF
FROM CADDYSHACK GOLF SHOPS.

CLOTHING
FABULOUS SAVINGS FOR THE FAMILY

JORDACHE UNION BAY LEVI
\$9.95
OTHER JEANS 3 for 10

SUITS
FAMOUS BRANDS
SUITS • SPORTCOATS • TIES
SLACKS • SWEATERS

CHANGING BOOTH PROVIDED
KROTH'S MEN'S WEAR & OTHERS

Ed's Action Sportswear
FACTORY CLOSEOUTS
BODYWEAR
FOOTWEAR
SWIMWEAR

SAVINGS TO
50% OFF
ACTION SPORTSWEAR

CAR STEREO

PIONEER • KENWOOD
PANASONIC • CRAIG
MARANTZ • JENSON • MANY MORE
EXAMPLES OF INCREDIBLE SAVINGS

DIGITAL AM/FM CASSETTE \$68
6 X 9 20 oz. 3 WAY 1995
CAR ALARM 1995

HALEY'S Stereo Electronics

CELLULAR PHONES
from 99¢ DAY
YOUR CHOICE
AT&T • PANASONIC • WALKER
G.E. • OKI • NOKIA • NEC
AMERITECH • GLENAYRE
BRITISHBISH

LEATHER JACKETS

Over 1,000 Men's & Women's
Fashion or Cycle Jackets

Priced from
\$2999 TO \$5999

MICROWAVE OVEN
While 24 Last \$58

CAMERAS
POLAROID MINOLTA NIKON CANON
50% OFF LIST
TRADE-INS WELCOME

JEWELRY
50-80% OFF
EVEN GOLD CHAIN

LEATHER PANTS \$59
ELLSKIN PURSES 50% OFF
MUCH MORE

WATERBEDS

\$59 WITH HEADBOARD
CALIFORNIA ANY SIZE
PADDED RAILS 1995

DELUXE BOOKCASE
\$139
SHEETS 1995

SAN CARLOS MIRROR BOOKCASE
\$199 SAVE \$200
COMFORTERS \$29

ALL BEDS COMPLETE WITH HEATER, LINEN, FRAME, MATTRESS, & BEDDING
DOZENS OF WATERBEDS 50% OFF OR MORE

WATERBED FACTORY

GRAPHIC ART WHOLESALERS

1000's OF
FRAMED PICTURES FOR
HOME OR OFFICE DECOR
50% - 70% OFF

NICHOLSON'S

★ HONDA ★ KAWASAKI
★ YAMAHA ★ SUZUKI

FINANCING
FANTASTIC SPECIALS

2 MILLION DOLLAR INVENTORY
FURNITURE

EXAMPLE OF INCREDIBLE SAVINGS

PIT GROUPS
• CHOOSE FROM DOZENS
• MANY COLORS
• CHOICE OF FABRICS
from **\$333**

EXAMPLE OF INCREDIBLE SAVINGS

BEDROOMS
COMPLETE BEDROOMS
MATTRESSES \$28.50
from **\$199**

EXAMPLE OF INCREDIBLE SAVINGS

LIVING ROOMS
from **\$298**

MANY FAMOUS BRANDS • MC • VISA BRING YOUR TRUCK OR WE DELIVER

ABWA Members Plan Luncheon, Fashion Show

The February meeting of the American Business Women's Association Chelsea Chapter was held Tuesday, Feb. 25, at the Chelsea Community Hospital.

There were 17 members and three guests present. Guests were Wanda Garrett, Sue Esch, and Rhonda Elliott. Lengthy discussions were held pertaining to the luncheon and fashion show to be held March 22, at the Chelsea High school cafeteria at 1 p.m.

Vocational speaker for the evening was Shirley Case, a computer operator with H & H Distributors. Shirley told of how H & H distributes pet supplies all over Michigan and parts of Ohio. They are a growing business and building a new building.

Our next meeting will be held at the Chelsea Community Hospital March 25 at 6:30 p.m. The program will be on credit and financing for women.

Seminar Slated on Insect, Disease Control for Plants

Would you like to learn how to detect plant problems before they become serious?

The Co-operative Extension Service, Michigan State University and the Hidden Lake Gardens in Tipton, are sponsoring a special seminar on insect and disease management of ornamentals. This is especially appropriate for plant industry people and serious home gardeners with extensive plantings of trees and shrubs.

The all-day seminar will feature specialist speakers from Michigan State University and extension field agents. The program will also include field and laboratory work with hands-on activities.

Call the Extension Office for information about reservations and directions.



HUME-HOCKEY—Mr. and Mrs. Philip W. Hume, of Chelsea, have announced the engagement of their daughter, Amy Leslie, to Randy James Hockey, son of Mr. and Mrs. Austin Hockey, of Clawson. The future bride is a 1983 graduate of Chelsea High school and is majoring in accounting information systems at Eastern Michigan University. The future bridegroom is a 1973 graduate of Clawson High school and a 1978 graduate of Eastern Michigan. He is employed by his alma mater as a programmer/analyst. He is also completing a master's degree in information systems. Both Amy and Randy are Ypsilanti residents. A June 14 wedding is planned.

Senior Housing Workshop Slated

"Housing Choices for Seniors" will be the topic at a workshop for senior citizens on Thursday, March 20, from 1 to 3 p.m. at the Chelsea Senior Citizens Center, 699 McKinley St.

Sponsored by the Housing Bureau for Seniors, affiliated with the Turner Geriatric Clinic in Ann Arbor, the workshop will feature slide shows of housing-related concerns.

The workshop is free and is open to any interested members in the community. To register call the Housing Bureau for Seniors, at 763-0970.

Telephone your club news to 473-1371

Senior Citizen Activities

Weeks of March 12-March 19
MENU

Wednesday, March 12—Chop suey with vegetables, rice, orange and pineapple gelatin salad, granola bar, milk.

Thursday, March 13—Barbecued ribs, buttered corn, three-bean salad, corn muffins, fresh fruit, milk.

Friday, March 14—Breaded fish filets, California blend vegetables, creamy fruit salad, bread and butter, carrot cake, milk.

Monday, March 17—St. Patrick's Day—Corned beef, buttered cabbage, potato salad, cloverleaf rolls, Irish fluff pudding, milk.

Tuesday, March 18—Chicken tetrazini, zucchini, peach and prune salad, orange juice, cookie, milk.

Wednesday, March 19—Chicken noodle soup, sloppy joe on bun, cole slaw with vinaigrette dressing, fresh fruit, milk.

ACTIVITIES

Wednesday, March 12—9:30 a.m.—Cards, break for lunch but play continues until 4 p.m.—pinch: 4-and 6-handed euchre.

9:30 a.m.—Needlepoint, knitting and crocheting.

10:00 a.m.—Ceramics.

1:00 p.m.—Fitness.

1:00 p.m.—Bowling.

Thursday, March 13—9:30 a.m.—Cards.

9:30 a.m.—Needlework.

9:11:00 a.m.—Needlework group meets to make lap robes, slippers and ditty bags.

9:30 a.m.—Crafts.

1:00 p.m.—Kitchen Band.

1:00 p.m.—Needlework.

2:00 p.m.—Walking.

Friday, March 14—9:30 a.m.—Cards.

9:30 a.m.—Needlework.

11:45 a.m.—Birthdays party.

Monday, March 17—9:30 a.m.—Cards.

9:30 a.m.—Needlework.

9:30 a.m.—China painting.

11:00 a.m.—Hostess.

1:00 p.m.—Stained glass.

1:00 p.m.—Bingo.

Tuesday, March 18—9:30 a.m.—Cards.

9:30 a.m.—Needlework.

10:00 a.m.—Crafts.

1:00 p.m.—Euchre.

1:00 p.m.—Building committee.

Wednesday, March 19—9:30 a.m.—Cards.

9:30 a.m.—Needlework.

10:00 a.m.—Ceramics.

10:30 a.m.—Blood pressures checked.

11:00 a.m.—Medicare-Medicaid counseling and assistance.

1:00 p.m.—Fitness.

1:00 p.m.—Bowling.

Support Group Offers Help to Those Caring For Aging Relatives

The University of Michigan Medical Center's Turner Geriatric Services will be offering a monthly support group, "Caring for Aging Relatives," beginning Wednesday, March 19, from 5:30 p.m. to 7:30 p.m. and thereafter the third Wednesday of the month.

The purpose of the group is for members to offer support to each other in dealing with feelings and situations as caregivers.

For registration, or for further information, call 764-2556.

Professional Secretaries Will Hear Psychologist

Huron Valley Chapter of Professional Secretaries International (PSI) will hold its regular meeting on Thursday, March 13.

The program will include Toni Antonucci, psychologist and researcher, ISR-University of Michigan, who will talk on "The Effects of Multiple Social Roles on Women's Well Being." Women today must juggle many positions in society. How has it affected our health and well-being?

The program will start with dinner at 6:30 p.m. at Garden Alcove, Ann Arbor Hilton, near Briarwood Shopping Center, followed by the speaker at 7:30 p.m.

For more information, contact Cynthia Given or Faye Whitehead at 973-3352.

Please Notify Us In Advance of Any Change in Address

CAROL'S CUTS

40 CHESTNUT

Monday, Wednesday and Friday

475-7094

By Appointment Only 9:00 a.m. - 3:00 p.m.



BETTY RASMUSSEN received her Bachelor of Music Degree from Eastman School of Music, University of Rochester, N.Y. She is a member of Mu Phi Epsilon International Music Fraternity, Ann Arbor Area Piano Teachers Guild, American Suzuki Association, and is certified professional piano teacher with Michigan Music Teachers Association and with Music Teachers National Association. She has been teaching piano in Chelsea for the past 16 years.

Breathers Club Will Discuss 'Spring Allergies'

Chelsea Breathers Club, an educational and social group for patients with chronic lung diseases, will meet Saturday, March 15. The meeting will be held from 11 a.m. to 1 p.m. at the Chelsea Community Hospital, Dining Room "A", 775 S. Main, Chelsea.

Topic for discussion will be "Spring Allergies" presented by Bob Pawlowski, R.T. For further information, contact the American Lung Association at 313-955-1030.

Workshop Offered On Handling Stress Situations

The University of Michigan Medical Center's Turner Geriatric Services is presenting a workshop, "Fight or Flight?—Feelings about Feelings," on Wednesday, March 19, 1-3 p.m. at the Pittsfield Senior Center, 701 W. Ellsworth in Ann Arbor.

Dr. Donald Kewman of the Physical Medicine and Rehabilitation Department, University of Michigan Medical Center, will speak on how to handle stress and how to help others cope with stressful situations.

A panel including Evelyn Neuhaus, senior hospital planner, University of Michigan Medical Center; Merrill Nemuroff, Public Services Assistant, Community Development Block Grant; and Harry Grow, Turner volunteer will speak about their own experiences in dealing with stress in different kinds of situations at various stages of life.

EXCLUSIVE
Birdview
LOY'S TV
SATELLITE
512 N. MIDDLE
ANN ARBOR
769 0198

The Chelsea Standard, Wednesday, March 12, 1986 3

Kerosene Can Stolen from Garage

A kerosene can worth \$10 was stolen from a garage at 625 W. Middle St., Chelsea police reported.

Police said the theft occurred sometime during the evening of March 9 or early morning of March 10. Charles Brooks reported the incident.

Don't forget to renew your Chelsea Standard subscription!

Village Accepts Bid for Used Digger Truck

Heller Electric Co. outbid one other company for the rights to a 1953 digger truck being sold by the village.

Heller Electric offered \$750 for the truck, that had not been used by the village for nearly two years.

William J. Dault Construction offered \$601. The sealed bids were opened last Tuesday at the regularly scheduled meeting of the village council.

Spring Has Arrived

at

The Village Shoppe

134 E. Main - Manchester

CHOCOLATE & CLOTH
BUNNIES, EGGS & CHICKS

Special Cards, Books
and Jelly Bellies

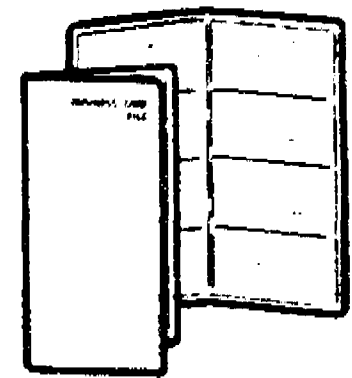
Phone 428-9640

Open 7 Days



Happy St. Patrick's Day!

Happy St. Patrick's Day!



Hazel
America's Case Maker

COPYING SERVICE

Chelsea Office Supply

118 S. Main

Ph. 475-2329 or 475-2342

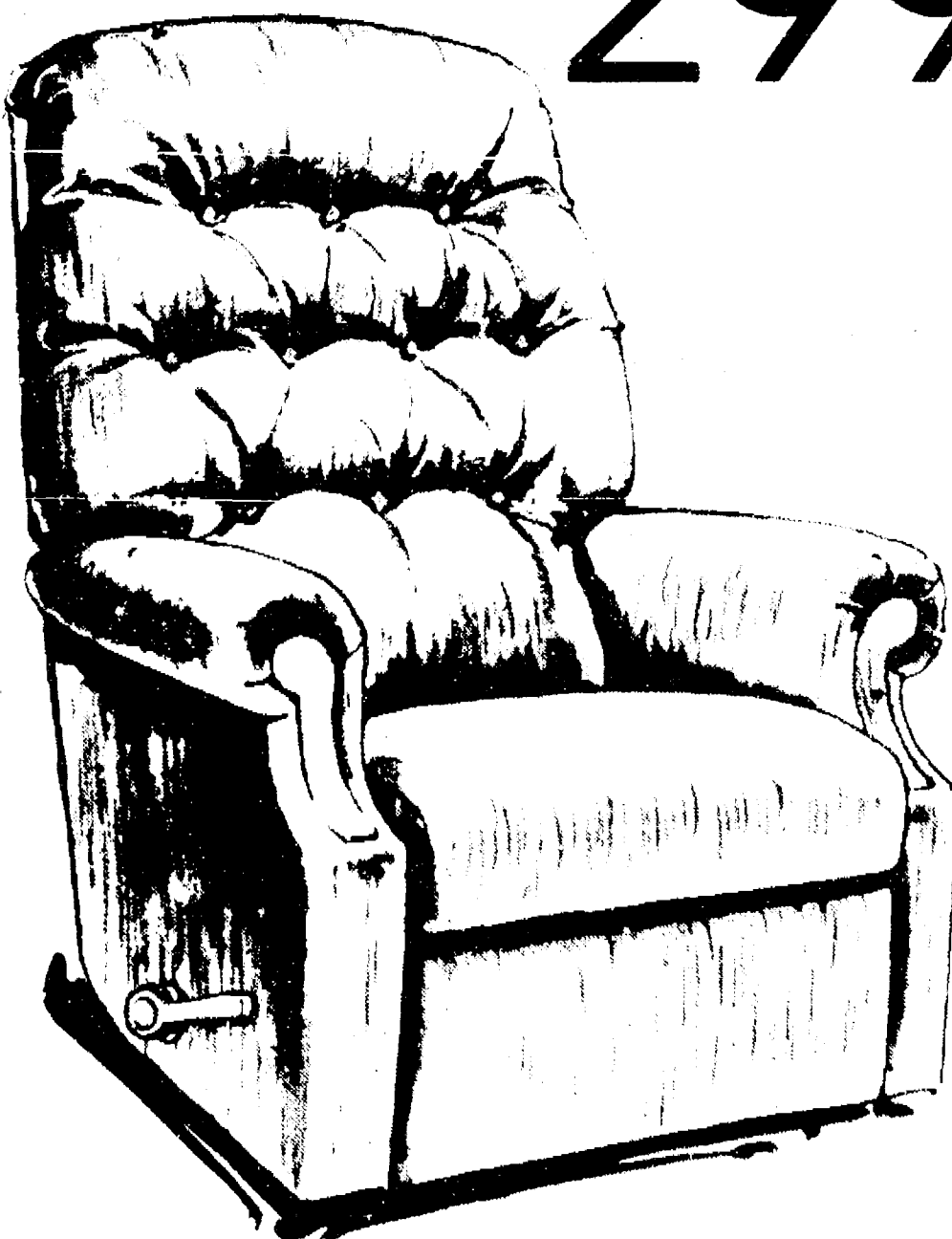
Mon.-Fri. 9:30-5:30

Sat. 9:30-4:00

Special Purchase!

Save on this best selling
LA-Z-BOY recliner!

\$299



Merkel

HOME FURNISHINGS - CHELSEA

Open Monday and Thursday night until 8:30 p.m.

Phone 475-8621 or 1-800-482-3650

Happy St. Patrick's Day Happy St. Patrick's Day

ST. PATRICK'S DAY SALE 10% Off

entire stock
(including sale items)

Must Wear Green!

Come in and help us celebrate St. Patrick's Day. Show us your green and we will give you an extra 10% OFF on any item you bring to the register. One day only, March 17, 9:00 AM - 8:30 PM

Dayspring Gifts

hallmark

116 S. Main, Chelsea

475-7501

The Chelsea Standard

Established 1877

Walter P. and Helen May Leong, Publishers (313) 475-1371

USPS No. 101-720

Published every Wednesday at 300 N. Main St., Chelsea, Mich. 48118 and second class postage paid at Chelsea, Mich. 48118 under the Act of March 3, 1879. Postmaster: Send address changes to The Chelsea Standard, 300 N. Main St., Chelsea, Mich. 48118.

Subscription Rates (Payable in Advance)

In Michigan	Outside Michigan
One year in advance \$12.50	One year in advance \$15.00
Six months \$6.50	Six months \$8.00
Single copies mailed \$.35	Single copies mailed \$.45

DEADLINES

News Notices	Monday Noon
Display Advertising	Thursday 5 p.m.
Classified Advertising	Saturday Noon
Late Classified Ads	Monday Noon

OFFICE HOURS

Monday-Friday	8:30-5:30 p.m.
Saturday	9:00-12 Noon

MEMBER

NATIONAL NEWSPAPER

Association Founded 1865

National Advertising Representative

MICHIGAN NEWSPAPERS, INC.

877 N. Washington Ave.

Lansing, Mich. 48206

JUST REMINISCING

Items taken from the files of The Chelsea Standard

4 Years Ago . . .

Tuesday, March 9, 1982—

Members of the UAW Local 437 at Federal Screw Works voted March 4 to accept management's concessions deemed necessary to keep the local business in Chelsea. Employees will have their cost of living frozen for one year and five paid holidays will be forfeited. Present employment totals 101 blue collar and 25 white collar workers, while 52 are currently laid off.

"Happy Birthday Bald Eagle" was the theme for a birthday card contest sponsored by Ranger Rick magazine. Matt Riemenschneider, a 10-year-old student at South school, earned fifth place nationally with his sketch of Mt. Rushmore with the inclusion of the bald eagle in the stone carvings.

In the Class B state wrestling meet held last week at Ferris State College, Chelsea took seven wrestlers to compete. At the end of the week-end, Rick Poljan finished third in the state while Ernie Bristle earned sixth-place state honors.

14 Years Ago . . .

Thursday, March 9, 1972—

Henry D. Arkison, circuit riding district court judge for the Chelsea area, has an office in the new court building, once the Chelsea State Bank. Arkison presides over court in Chelsea three days a week, spending the other days in Dexter, Whitmore Lake, Saline and Manchester. The district courts were set up in 1969 to replace justice of the peace and municipal courts.

Arkison considers this a change

WEATHER				
For the Record . . .				
	Max	Min	Precip	
Wednesday, March 5	37	31	0.50	
Thursday, March 6	31	5	0.03	
Friday, March 7	32	2	0.06	
Saturday, March 8	37	3	0.02	
Sunday, March 9	48	28	0.06	
Monday, March 10	49	34	0.75	
Tuesday, March 11	46	33	0.04	

The Importance of Planning

It is only natural to put things off, but proper planning can spare a family traumatic decisions and financial burdens in the event of one's death. Pre-arranging a funeral may seem a difficult task, but there can be peace of mind for an individual who knows his or her wishes will be followed. For more information and guidance in funeral pre-arrangement . . . why not visit us or write for your FREE Pre-arrangement Booklet.

Please send me my copy of "My Specific Requests"

Name _____

Address _____

Staffan-Mitchell

FUNERAL HOME

124 PARK ST. PH. 475-1444

MEMBER BY INVITATION

NATIONAL SELECTED MORTICIANS

MICHIGAN MIRROR

By Warren M. Hoyt, Secretary, Michigan Press Association

Smith Releases Results of Inmate Survey

Senator Nick Smith (R-Ad.) recently released results of a recent inmate survey which he said supports his contention that there is a lack of discipline and security within the correctional facilities.

Smith, whose Senate district includes the Southern Michigan Prison at Jackson and chairman of a Senate Safe Streets subcommittee studying corrections facilities and policies, suggested the survey results show that drug and alcohol use is not discouraged as usage is believed to be a "pacifier" for prisoners.

Gail Light, spokesperson for the Department of Correction, said the department had not seen the study, but it appears that it is not scientifically developed by persons involved in polling.

Survey questionnaires were also sent to 300 corrections employees and 300 prisoners recently released from a parole program. Results of the responses from the correctional employees are being tallied.

Thirty-five inmates said they believed over 60 percent of all corrections facility residents use illegal drugs with 29 stating that

Uncle Lew from Lima Says:

DEAR MISTER EDITOR:

Ed Doolittle opened the session at the country store Saturday night with a gripe that in much of the news is like a half-time score. He asked the fellows what they had heard lately about the magazine for street people in Boston. At last report two months back, Ed said, all 10,000 copies of the first issue was still at the printers because the publisher didn't have money to rent a truck to haul em around to giveaway points.

You got to wonder how a story like that ends. Ed said, you got to wonder about a feller that starts a magazine like that, and you got to wonder about what kind of reader a advertiser in a magazine like that is hoping to reach. That's just one of the recent cases where the reader keeps waiting for the next chapter that never comes.

Another one, Ed went on, is the cure for the common cold that was announced recent. It's someone called Interferon that you squirt up your nose to keep from catching cold.

Ed said he read that to mean that if Interferon works the company that makes it will be in better shape than if it had a monopoly on air. Everybody will have to walk around with a snoutful of Interferon to keep from catching a cold from everybody else. Ed noted that the spray won't cure a cold, just prevent it. This gives it the same advantage you get from carrying a good luck charm. Was Ed's words, if you don't have bad luck it works.

Practical speaking, Rex Hookum said, the news is partial scores because the game never ends. Bug had saw where a scientist said future civilizations will be able to chart this one by the kinds of containers we leave for it. For instance, when the water shifts and they dig in our river bottoms they can write their histories from bottles and cans. Whats gone on since fishermen switched from glass to tin to steel cans from the triangle holes to the pull rings that come off and choked the fish to the pop tops that stay on to whatever comes next, was Bug's words.

PALMER PUTS YOU IN THE DRIVER'S SEAT FOR \$128⁸⁶*

AFFORDABLE PAYMENT PLAN

SPECIAL RATE 10.50%

PRICE INCLUDES DESTINATION CHARGE

1986 ESCORT

FRONT WHEEL DRIVE HATCHBACK

*Affordable payment plan, 48-mo. lease. Total of payments - \$6,185.28 with approved credit. Pay only 1st mo. payment and \$150.00 refundable security deposit on delivery plus tax. Car can be purchased at end.

PALMER FALS

FORD AUTHORIZED LEASING SYSTEM

OPEN: MON. AND THURS. 8:30 A.M. 'TIL 9:00 P.M., TUE., WED., AND FRI. 8:30 A.M. 'TIL 6:00 P.M., SAT. 'TIL 1 P.M.

SERVICE OPEN SATURDAYS TOO!

In Washtenaw County since April 15th, 1912

CHELSEA 475-1301

40-60 percent are users. Some 79 said they believed the drugs entered the prison mostly through employees' 79 responses and through visitors' 67 responses.

Smith, in releasing the survey to which 160 of 300 prisoners responded, said the emphasis has switched from protecting the public to indulging the prisoner.

He said the survey also shows that the threat of prison is not a "significant" deterrent to those who have served time, but it is a deterrent to those who have not been sentenced to prison.

The survey indicated that 124 of the respondents said they were concerned for their own physical safety with about an even split between the belief the threat is from other inmates and guards.

However, only 56 said they had been assaulted when in prison with only six indicating the assault was sexual in nature.

As a method of reducing the chances of committing another crime after release, 126 survey respondents said it was important to improve work and job skills while incarcerated.

Of the total 104 said they would be willing to repay part of the educational costs within five

years of release. A like number, however, said they should not be required to pay part of the costs relative to their imprisonment.

Other results of the survey show that 92 of the 160 responding believe some inmates being placed in the community residential programs are too dangerous to be so released to those programs.

The inmates said first-time offenders should have priority over repeat offenders for educational/vocational training, counseling and trustee status.

Ninety-eight respondents said the parole board process should be eliminated and standard guidelines substituted. Some 103 said hearings officers do not understand prison environment while 93 said the hearings process was not fair. Another 183 respondents said penalties imposed by hearings officers do not deter additional misconducts or help maintain order in the institution.

Governor Proposes Revitalization Plans for Lansing

Governor James J. Blanchard has unveiled a plan to work with Lansing city officials to help revitalize the area of downtown Lansing surrounding the State Capitol Building and other state office buildings.

Addressing a recent meeting of Lansing City Council, Blanchard urged that the state and city work together to "enhance the image" of the capital city.

He announced that Robert L. Mitchell, deputy director of the Department of Transportation and co-ordinator of public investment of infrastructure, will serve as the state's liaison for the revitalization of the city.

Initiatives outlined by the governor included updating the 36-year-old Capitol Complex Master Plan; dedicating the Capitol complex as a public park to improve the city's major downtown tourist attraction; enhancing entrances to the Capitol complex; evaluating the feasibility of acquiring the Lansing Civic Center and convert it to a tourist center; and improving landscaping, lighting and security in the downtown area around the Capitol complex.

Low Vision Group To Hear EMU Professor

Dr. George Barach, associate professor at Eastern Michigan University, who trains teachers for the visually impaired, will speak at the regular meeting of the Low Vision Group at Turner Geriatric Clinic on March 26, from 1 to 3 p.m. The topic will be communication skills and the impact of visual loss on the communication process.

All interested persons are welcome to attend.

For further information, call 764-2556.

PALMER PUTS YOU IN THE DRIVER'S SEAT FOR \$128⁸⁶*

AFFORDABLE PAYMENT PLAN

SPECIAL RATE 10.50%

PRICE INCLUDES DESTINATION CHARGE

1986 ESCORT

FRONT WHEEL DRIVE HATCHBACK

*Affordable payment plan, 48-mo. lease. Total of payments - \$6,185.28 with approved credit. Pay only 1st mo. payment and \$150.00 refundable security deposit on delivery plus tax. Car can be purchased at end.

PALMER FALS

FORD AUTHORIZED LEASING SYSTEM

OPEN: MON. AND THURS. 8:30 A.M. 'TIL 9:00 P.M., TUE., WED., AND FRI. 8:30 A.M. 'TIL 6:00 P.M., SAT. 'TIL 1 P.M.

SERVICE OPEN SATURDAYS TOO!

In Washtenaw County since April 15th, 1912

CHELSEA 475-1301

CPR Refresher Course Slated

Chelsea Community Education is offering a CPR refresher course at Chelsea High school in the Health Occupations room. The class is Monday, March 24, from 7 to 10 p.m.

To be eligible for the class your card may not be expired for more than two years and you must show your card to the instructor. The instructors will be Tom Kemp and Bill Koernke.

To register call Community Education at 475-0830.

Please Notify Us of Any Change in Address

State Licensed and Insured

JERRY HANSEN & SONS

ROOFING & SIDING COMPANY

Phone (313) 994-4232

P. O. Box 2123, Ann Arbor, Mich. 48106

ALL TYPES OF ROOF REPAIRS, SIDING, GUTTERS, DOWNSPOUTS, INSULATION WORK

27 Years Experience

Now is the time to book your cruise.

SPECIAL SAVINGS NOW AVAILABLE!

475-8630 Call us Now 475-8639

Always Lowest Available Air Fares

AIRLINE TICKETING - CRUISES - ANTRAK

Corporate Accounts Welcome

ACCENT ON TRAVEL LTD.

Affiliated with Huron Valley Travel

There is No Charge for Our Service!

FREE TICKET DELIVERY

104 S. MAIN ST., CHELSEA, MICH. 48118

(Above Secretary of State office)

FAITH N' BE JABBERS!!

ITZ A SALE - IT TZ - IT TZ!!

A ST. PATRICK'S 3-DAY SALE

Get An EXTRA 10% OFF on Any Cash Purchase of \$6⁰⁰ or More

SERENDIPITY PAPERBACK BOOK EXCHANGE

Where All Books Are Always 1/2 Price

Offer Good These 3 Days

WED. 14 MAR. SAT. 15 MAR. MON. 17 MAR. ST. PATRICK'S DAY

Ph. 475-7148

116 Park St., Chelsea

Come See Us and Save Everyday!

"Vacation Disaster"

Don't let this happen on your first day out!

GET AN EARLY START

MARCH TANNING BED SPECIAL

Buy 2 visits at regular price and get your 3rd visit for only **99¢**

Gemini

FAMILY HAIR CARE

107 W. MIDDLE ST. CHELSEA

475-7006

Mon.-Fri., 8:30 to 8:00 — Sat. 8:00 to 3:30

A VIEW from the CLOCK TOWER

By Will Connolly

Because I have been writing this column for the past six months, some people believe that I am an employee of The Chelsea Standard. This is not so. Walt Leonard, the publisher, offers me the use of this column so that, as a local writer and editorial observer, I will have a public forum.

In the five years since retiring from business at the end of 1980, I have had an earned income of \$1,100 doing several odd jobs for old clients. Other than that, my wife and I have lived comfortably on income from investments and Social Security. Nevertheless, we continue to work, averaging at least 60 hours a week as unpaid volunteer workers for civic enterprises and public affairs including The Clock Tower, Chelsea United Way, the Chelsea Sesquicentennial, the Chelsea Area Historical Society, the Civic Foundation of Chelsea, the Chelsea Rod and Gun Club and the re-election of Judge Kenneth Bronson. More recently we have been involved in the campaign to re-elect village president Jerry Satterthwaite and to encourage passage of the sewer bond issue. In addition we have worked on public affairs projects involving high school and public aquatics, the Chelsea Girl Scout 50th anniversary, the Wolverine Boy Scout Council and other local causes.

Our only bills to these civic clients are for reimbursement for approved printing, postage, out-of-town car mileage, long distance phone calls and office or photo materials.

In addition to the above I have written four books since moving from Ann Arbor to Chelsea in 1970. These include two novels which are now being reviewed by literary agents.

Why am I writing all this about myself? Because I am involved in so many public affairs that I continually find myself in positions of too much visibility. To avoid so much publicity, I could give up all these activities and go hide under the bed. There, with nothing to do, I would quickly die.

Having gotten this far, let me add some background.

My father was a writer. My mother was a journalist and novelist. While other kids were in kindergarten I was kept at home to learn how to read, write and do simple arithmetic.

Upon entering Frances E. Willard Elementary school in Chicago, I spent one day in first grade before being transferred to second. When my father died at age 43 from a stroke brought on by having his fortune wiped out in the grain futures market, my mother took over the support of the family. She was hired by the Delphian Society to write hundreds of articles on various informational, intellectual subjects. Barely in my teens, I became her researcher, chasing to libraries seven days a week. My older sister Helen did the typing. We all did editing and proofreading.

As time went on, my mother became a daily newspaper reporter and feature writer. Helen went to the University of Illinois and, as an academic sideline, became a writer for the *Daily Illini*.

At age 16 I quit high school and obtained employment as a janitor, press feeder, ad taker and news writer for a small weekly newspaper, followed by employment on the Miami Herald and the New York American. By 1939 I was vice-president of a public relations firm on LaSalle St. in Chicago—married and with a family. Also with no money in the bank and a boss who was thousands of dollars delinquent with my paychecks. On Jan. 2, 1934, dad broke. I established The Connolly Company at 30 N. LaSalle, as a public relations consultant. I was given a year's office rent by the McCormick estates in exchange for services to publicize rental opportunities in their buildings. The phone company gave me credit because I had never been late in a payment. A printer provided me with business cards, letterheads and envelopes in exchange for sales promotion copy.

It was the depth of the Great Depression. All enterprises were desperate for business. Sales for them could result from written and printed marketing efforts or publicity and I soon found clients. They included the Olson Rug Co., the Wieboldt Department Stores, even Ed Kelly, the Democratic Mayor of Chicago who knew I was a Republican.

The business prospered but I limited its growth to a staff of five. It had the potential for 500 employees but I refused to solicit ongoing agency relationships with big corporations. They were offered but I was willing to work only on special assignments. My feeling about life was that I was a writer, not an executive or administrator, and I have always kept it that way. Nevertheless, my earnings were as much or more than many of the highly placed executives I worked for.

My public relations clients included Shell Petroleum, Ford, GM, Chrysler, General Electric, Goodyear, Piper Aircraft, Beech Aircraft and 23 banks including Citibank of New York, National Bank of Detroit and National Bank and Trust of Ann Arbor.

Somewhat I got into the writing of scripts for documentary films, often with a corporate client footing the bill for a government agency. I wrote "Don't Let Your Car Become a Criminal" for the FBI and Ford Motor Co., "Bombproof" for the Civil Defense Administration and "VD—Stopping the Spread" for the U.S. Navy and the U.S. Public Health Service. The Atomic Energy Commission invited me to write a film on atomic power—what it is and how it works. They asked me what qualifications I had for writing a film on the subject. I replied, "Absolutely nothing. My prime qualification is my ignorance. If you have anyone who can make me understand what it is about, I can tell it to the world." My finished film was presented to a Geneva convention of atomic scientists with sound recordings in seven languages.

During World War II I served as Chief Operations Analyst of the Third Air Force with a staff of 120,000. We trained fighter pilots and bomber crews for overseas deployment and were responsible for the air defense of the U.S. South Atlantic sea frontier.

After the war, I moved to Michigan to be nearer my automotive clients, residing in Bloomfield Hills, Ann Arbor and, finally, Chelsea.

Well, there you have it. After living in this 152-year-old community only since 1970, I still feel like the new kid on the block. But, boy, am I glad to be here!

P.S. For my younger readers. Nowadays business careers rarely begin at 16. They die there. *Get your college degree.*

U. of M. Dean Will Be Lunch & Learn Speaker

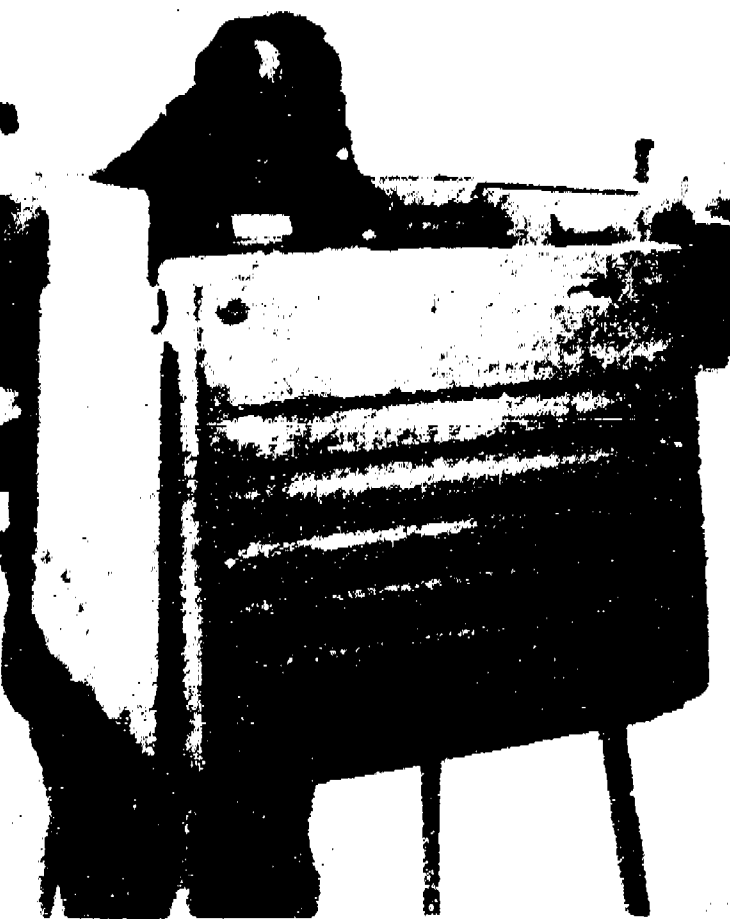
James J. Duderstadt, dean, College of Engineering, University of Michigan, will be speaking at the "Lunch and Learn" program sponsored by Citizens Trust on Tuesday, noon, March 18, at the Campus Inn, Ann Arbor. His topic will be "Ann Arbor: High Tech Mecca for the Midwest."

Dean Duderstadt has been associated with the University for the past 17 years. He completed his undergraduate work at Yale University and his graduate work at the California Institute of Technology where he also received his Ph.D. Recently he received the Arthur Compton Award from the American Nuclear Society.

His luncheon address on March 18 is open to the public. A fee of \$8 covers the cost of the lunch. Reservations may be made by calling Citizens Trust, 994-5555, ext. 213.

Chemical Dependency Program Director To Discuss Child Problems

Neil Carolan, director of the Chemical Dependency Program, Catherine McAuley Health Center, will speak on "Adolescent Chemical Dependency: The Ongoing Problem," on Friday, March 21 from 12 noon to 1:15 p.m. in Huron Oaks Multipurpose Room, Catherine McAuley Health Center, 5301 E. Huron River Dr., Superior township.



CANDIDATE FOR MAYOR CHARLIE RITTER punched his ballot early Tuesday, one of several hundred voters who reached the polls before noon. By noon, more than twice the number of voters in all of last year's election had cast their votes.

DIANE S. WIEDMAYER CERTIFIED PUBLIC ACCOUNTANT

COMERICA BANK BUILDING
135 E. MAIN, SUITE 202
MANCHESTER, MICHIGAN 48158
(313) 428-8411 (313) 428-7798

THIS WEEK'S THOUGHT

By Donald Cole



WHY DOES ANY ONE STAY AWAY FROM CHURCH?

Because you are POOR? ... Admission is free ... Because you are RICH? ... You can remedy that ... Because it RAINS? ... You go to work in the rain ... Because it is HOT? ... So is the golf course ... Because it is COLD? ... It is warm and friendly here ... Because of HYPOCRITES? ... You associate with them every day ... Because of the COMPANY? ... They will admire your loyalty; bring them along ... Because of CLOTHES? ... The church is not a fashion show ... Because of CHURCH STANDARDS? ... Take a look at the Bible standards if you think ours are high ... Because the church asks for money? ... So does the grocer ... Because of EMOTIONALISM in religion? ... How about the baseball game or your favorite sport? ... Because you intend to attend LATER? ... Isn't that presumptuous? How can you be sure? COLE-BURGHARDY CHELSEA CHAPEL, 214 East Middle St., Chelsea, Mich. Phone 475-1551.

ATTIC SALE

Thurs., Fri. & Sat. Only, March 13-14-15

9:30 a.m. to 5:30 p.m.

WOMEN'S

Sleepwear... \$5 to \$10

Assorted Slacks... \$10

Hats, Gloves,

Mittens... \$2 to \$10

Levi Pants... \$5

Panties... \$1, \$2, \$3

Bras... \$5

Slippers... \$3

Sweaters... \$5 to \$15

Shoes... \$5 to \$15

Jelly Shoes... 25¢

and More!

MEN'S

WRANGLER PRE-WASHED Basic Jeans... \$12⁵⁰

Sport Shirts... \$7⁵⁰

ASSORTED Spring Jackets... \$12⁵⁰

WOOL-COTTON Long Johns... \$5⁰⁰

OSHKOSH Work Clothes... \$7⁵⁰

PRE-WASHED Jeans... \$10 to \$12⁵⁰

Sweaters... \$5 to \$15

Dress Pants... \$10

Sport Coats... \$25

Belts & Ties... \$5

KIDS

Boy's Tops, 8-18... \$5 Student Pants... \$4

Jackets... \$10, \$15 and More!

DANCER'S

Chelsea's Friendly Dept. Store

Chelsea Welding, Inc.

PORTABLE WELDING

475-2121

Farm Machine Repairs

Truck Bumpers

Custom Hitches

HELL ARC

1190 Pierce Rd., Chelsea

8:30 M.F. 8:12 Sat.

COMMUNITY CALENDAR

Monday—

Chelsea Recreation Council 7 p.m., second Monday of the month, Village Council chambers.

Chelsea Substance Abuse Task Force—second and fourth Mondays, 7 p.m., Kresge House.

Chelsea Kiwanis Club meets every Monday, 6:30 p.m. at Chelsea Community Hospital.

Parent-Teacher South meets the second Monday of each month in the South School Library at 7:15 p.m.

Chelsea School Board meets the first and third Mondays of each month, 8 p.m., in the Board Room.

Chelsea Lionsess, second Monday of each month at the Meeting Room in the Citizens Trust on M-52, Chelsea, at 7:30 p.m. Call 475-1791 for information.

Parents Anonymous Group, Chelsea, a self-help group for abusive or potentially abusive parents, Mondays, 7-9 p.m. Call 475-9176 for information.

Lima Township Board meets the first Monday of each month at 8 p.m., Lima Township Hall.

Toughlove Parent Support Group—For parents troubled by their "teen-agers" behavior in school, in the family, with drugs and alcohol, or with the law. 7:30 p.m. Mondays St. Joseph Hospital, 5301 E. Huron River Dr. Education Center, Classroom 8. Information: Sue Thomas, 971-0047, or Gale Cobb, 996-8781.

Tuesday—

Rogers Corners Study Group, March 18 at the home of Helen Wolfgang. Food and people lesson at 6:30 p.m. Bring own table service.

Olive Lodge 156 F&M, Chelsea. Regular meeting, first Tuesday of each month.

Chelsea Area Jaycees, second Tuesday of each month at Chelsea Community Hospital. Open to men and women from ages 18 through 35. For more information call Tim Merkel, 475-3272.

Sylvan Township Board regular meetings, first Tuesday of each month, 7 p.m., Sylvan Township Hall, 112 W. Middle St.

American Business Women's Association 6:30 p.m. at the Chelsea Hospital fourth Tuesday of each month. Call 475-1707 for information.

Lima Township Planning Commission, third Tuesday of each month, 8 p.m., Lima Township Hall.

Chelsea Village Council, first and third Tuesdays of each month.

Lions Club, first and third Tuesday of every month, 6:45 p.m., at Chelsea Community Hospital, Ph. 475-7324 or write P.O. Box 121, Chelsea.

Chelsea Rod and Gun Club regular meeting, second Tuesday of each month at the clubhouse, Lingane Rd.

Chelsea Rebekah Lodge No. 130 meets the first and third Tuesday of each month, at 7:30 p.m.

Chelsea Communications Club, fourth Tuesday of each month, 8 p.m., Chelsea Lanes basement meeting room.

Wednesday—

VFW Post 4678 meeting second Wednesday of month, 7:30 p.m. VFW Hall, 106 N. Main.

OES, first Wednesday following the first Tuesday of the month at the Masonic Temple, 113 W. Middle at 7:30 p.m.

Wednesday, March 12, Support group meeting for family members of people with Alzheimer's Disease, at St. Clare's church, 2309 Packard Rd., Ann Arbor, 7:30 to 9 p.m. Call 962-6633 for more information.

Support Group for Relatives of Alzheimer's patients, Wednesday, March 19, 10 to 12 noon, at Turner Geriatric Center, 1610 Wall St., Ann Arbor. For information, call 764-2556.

Lima Extension, Wednesday, March 12, at 10:45 a.m., at Merkel's store, basement department. Program: "Home Decorating."

The Washtenaw County Convalescent Homes Auxiliary will hold its March meeting Wednesday, March 19, at Zion Lutheran church in Ann Arbor, at 9:30 a.m.

OES Past Matrons dinner and meeting at Senior Citizen site at North school, 11:45 a.m. Wednesday, March 12. Reservations must be made by March 10. Ph. 475-1779 or 475-1141. If schools are closed meeting will be cancelled.

Thursday—

The living dramatization of Leonardo DaVinci's "The Last Supper" performed by men from the Dansville-Vantown communities, March 27, 7:30. First United Methodist church, 128 Park St., Chelsea.

Chelsea Rod and Gun Club Auxiliary regular meeting, second Thursday of each month, 7:30, clubhouse, Lingane Rd.

Chelsea Area Players Board meeting second Thursday of each month, 7:30 p.m., at Citizens Trust meeting room. For more information call 475-2629.

American Legion Post No. 31. General meeting the first Thursday of each month at the post home, Cavanaugh Lake.

New Beginning, Grief Group first and third Thursday each month, 7:30-9 p.m., Family Practice Center, 775 S. Main St., Chelsea.

Chelsea Community Farm Bureau, Thursday, March 13, at the home of Mr. and Mrs. Leon Sanderson on Notten Rd., 7:30 p.m. Pot-Luck.

Knights of Columbus Women's Auxiliary, second Thursday of each month, 8 p.m. at K. of C. Hall, 20750 Old US-12.

Friday—

Annual Faith-in-Action fund raising dinner will be Friday, April 11, at the Chelsea Community Hospital, 7 p.m. For information or tickets call FIA at 475-3365.

Senior Citizens meet third Friday of every month, pot-luck dinner, games and cards, 6 p.m. at Senior Citizens Activities Center at North school.

Rogers Corners Farm Bureau members will meet Friday, March 14, at 8 p.m. at the home of Luke and Barbara Schaub.

Toastrmasters International, each Friday in the Woodlands Room at Chelsea Community Hospital at 12 p.m. For information call Judy Peak, 475-1311, ext. 311.

Misc. Notices—

Rummage sale, Thursday, March 20, 9 a.m. to 5 p.m., Friday, March 21, 9 a.m. to 4 p.m., at Longworth Building, N. Main St., Chelsea. Sponsored by Sarah Circle, Chelsea United Methodist Church. Proceeds for church building repairs.

North Lake Pre-School, located in Chelsea, is taking enrollment for the 1986-1987 school year for 3- and 4-year-old children for 2-5 days per week. We offer co-op, non-assist. and non-participating options. For further information call Jan Roberts, 475-3615.

Drop-In Service, the Children's Center at Chelsea Community Hospital, 475-1311, ext. 485 or 486.

Parent to Parent Program: In-home, friendly, visiting support system for families with children. Call 475-3305, ask for Jo Ann.

Parents Without Partners, support group for single parents. Youth activities, social events, discussion groups. For membership information, call Polly N. at 971-5825.

Home Meals Service, Chelsea. Meals served daily to elderly or disabled. Cost per meal, \$2.25 for those able to pay. Interested parties call Ann Feeney, 475-1493, or Joyce Manley, 475-2796.

Chelsea Social Service, 475-1581, 2nd floor of Village Offices. Thursdays, 10 to 4, or if an emergency need at other times, call Linda at 475-7405 or Jackie at 475-1925.

Sexual assault counseling for victim, family, friend. Assault Crisis Center, 40009 Washtenaw, Ann Arbor, 994-1616, no charge.

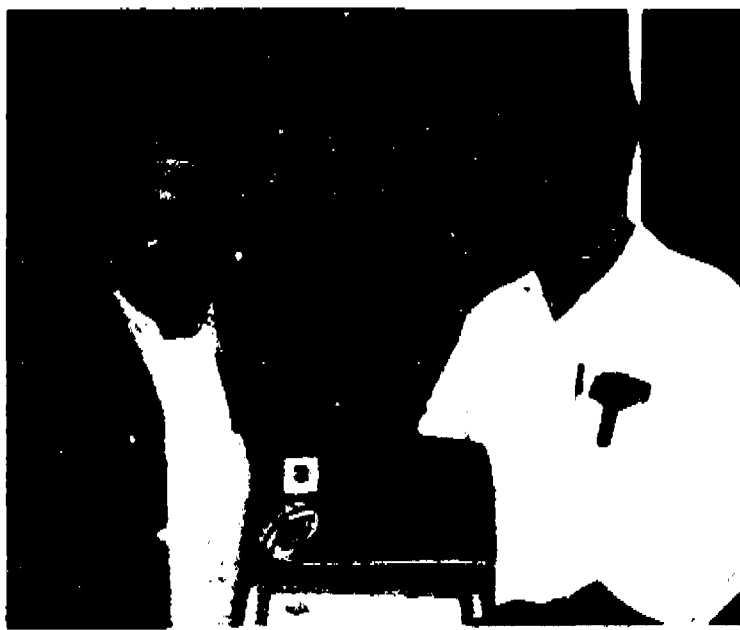
FIA Community Center, open Mon-Fri. for free services: food, clothing and financial assistance.

Lingerfelt's Son-in-Law Receives Distinguished Leader Award from Army

Staff Sgt. David W. Lening, son of Harue Lening of Rural Route 2, Coulterville, Ill., has received the 8th U.S. Army Distinguished Leader Award.

The award is presented to soldiers who have exhibited superior leadership abilities.

His wife, Sandra, is the daughter of Glenn Lingerfelt and Jane Lingerfelt, both of Chelsea. He is a 1978 graduate of Coulterville High school.



CLAUDE GIBSON retired from Dana Corp., Chelsea plant, Feb. 1 after serving six years as a machine operator. Claude plans to stay in the Chelsea area with his wife, Julia, and children. Above, plant foreman Roger Smyth gave Claude, left, his retirement folder and first retirement check. Earlier, area manager Dick Darrova gave Claude the Dana Blue Blazer. Claude lives at 17335 Old US-12.

Village Expects To Save \$4.7 Million in Power Plant Bond Refinancing

The Village of Chelsea may save nearly \$5 million in electrical costs over the next 32 years due to a refinancing of bonds for the Belle River Power Plant.

The Michigan Public Power Agency (MPPA), of which Chelsea is a member, issued \$500 million of Belle River revenue bonds in 1983 at an interest rate of 10.8 percent to purchase 242,630 kilowatts of capacity in the power plant. The plant is being constructed by Detroit Edison Co. at St. Clair.

The refunding revenue bonds sold have an average interest rate of 7.48 percent, according to the MPPA. The bonds will be used to "replace a portion of the higher priced bonds of 1983 and will lower the over-all debt service of MPPA and its 11 participating members in the Belle River project," according to Tim Morawski, general manager of the Board of Public Works at Holland and chairman of MPPA.

Total savings to the MPPA is expected to be \$350 million.

Chelsea, which is buying a capacity of 3,250 kilowatts, is projected to save \$4.7 million, according to village manager Fritz Weber.

Other members of MPPA in-

clude Bay City, Charlevoix, Crosswell, Grand Haven, Harbor Springs, Hart, Holland, Lansing, Lowell, Niles, Paw Paw, Petoskey, Portland, St. Louis, Sebewaing, Traverse City and Zeeland.

ANTIQUE CLOCK REPAIR ASQUITH JEWELERS

140 S. CLINTON STOCKBRIDGE
(517) 851-7820 or (517) 851-8251
Rings Sized Pocket Watch Repair
We Can Reset Your Diamonds
HOUSE CALLS MADE

Standard Want Ads Get Quick Results!

HAPPY 50th BIRTHDAY DON HENSON

— March 11, 1936 —

Love, from Your family

Do You Recognize This Couple?

They are know as "Pappa Jack" and "Gran" to some.

They celebrated Their 25th on March 11th

HAPPY ANNIVERSARY MOM & DAD!

Love, your kids,
Tommy, Howard, Kevin, Julie, Brandon and Lauren.



ATTENTION: KIDS AGES 5-11

EASTER EGG HUNT

Saturday, March 22

Promptly at 11 a.m.

VETERANS PARK, CHELSEA

Immediately following the hunt, all kids and their families are asked to return to Chelsea McDonald's where the prizes will be awarded.

(Event will be cancelled in case of inclement weather)

"GIMME A BREAK" Offer of the Month:

• BUY A 6-PC. NUGGETS and get a second 6 pc. FREE

CUSTOMER APPRECIATION OFFER OF THE MONTH:

• A FREE SUNDAY With A Purchase

McDonald's is hiring for all shifts.

Stop in and apply.



1535 S. Main St.
Chelsea

You Bear-ly Look

50

March 16, 1986

Have a purr-fect

Happy Birthday



Planning Your Wedding?

See our fine assortment of

- Invitations
- Reception Items
- Accessories
- Attendant's Gifts

The Chelsea Standard

300 North Main Street, Chelsea
Ph. 475-1371

Open: 8:30-5:30 M-F; 9-12 Saturday.

9TH ANNUAL

WAAM/AM 1600
NAC/SEMCA

The Chelsea Standard, Wednesday, March 12, 1986 7

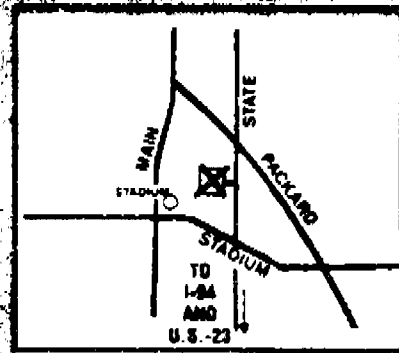
FACTORY AUTHORIZED • BASSET • KEMP • STRATALOUNGER • MORE

ANN
ARBOR

SUPER
SALE

SATURDAY 10 AM - 8 PM SUNDAY 11 AM - 5 PM

U OF MICH
TRACK AND
TENNIS BUILDING



STATE STREET NEAR PACKARD
FOLLOW THE CROWDS
TO 1-84
AND
U.S. 23

EXAMPLE



EXAMPLE



EXAMPLE



- CHOICE OF FABRICS
- MANY COLORS
- CHOICE OF FINISHES

FANTASTIC SPECIALS

4 DRAWER
CHESTS
\$49⁹⁵

5 PIECE
DINETTES
\$98

BED
FRAMES
\$19

4 PIECE
BEDROOM
\$199

BUNK
BEDS
\$88

MATTRESS
SETS
\$65 pc

3 PIECE
LIVING ROOMS
\$298

FREE
90 DAY
LAY-A-WAY

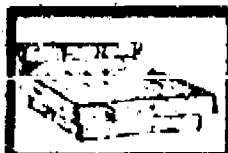
WATERBEDS!



COMPLETE
WATERBED

\$59
COMPLETE
(ANY SIZE)

EVERY BED
INCLUDES:
HEATER
LINER
MATTRESS
FRAME
HEADBOARD



DELUX
BOOKCASE

\$139
COMPLETE
BOOKCASE

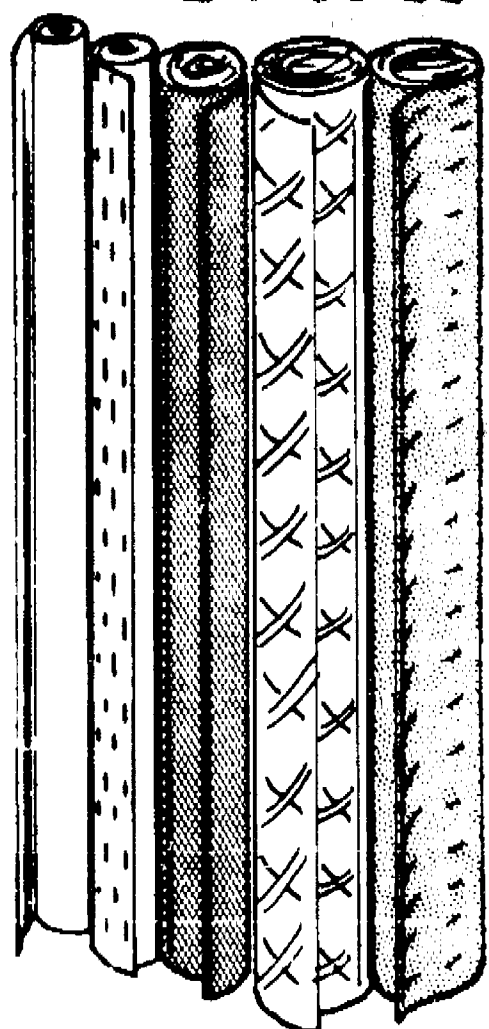


SUPER
BOOKCASE

SHEETS
\$19⁹⁹

SAVE BIG
HUNDREDS
OF BEDS
UNDER
\$200

CARPET BARN



SAVE UP TO
50% OFF

MAJOR BRAND
CARPETS

REMNANTS TOO!

EXPERT INSTALLATION
MC • VISA

GRAPHIC ART
WHOLESALE
1000's OF
FRAMED PICTURES FOR
HOME OR OFFICE DECOR
50% - 70% OFF

LEATHER
JACKETS

Over 1000 Men's & Women's
Fashion or Cycle Jackets
\$29⁹⁹ TO \$59⁹⁹

GRANDFATHER
CLOCKS

FACTORY DIRECT
SAVE UP TO
\$1000

MICROWAVE
OVENS

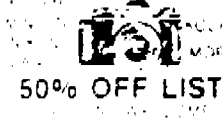


\$54

AM/FM CASSETTE



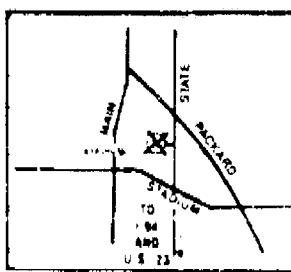
CAMERAS



ANSWERING
MACHINES

MUCH MORE • OVER 20 STORES

U of M TRACK & TENNIS
BUILDING



STATE STREET NEAR PACKARD
FOLLOW THE CROWDS

MARCH 15 - 16
SATURDAY 10 AM - 8 PM
SUNDAY 11 AM - 5 PM
MC • VISA



FRIENDS AND RELATIVES MOURNED the loss of Dan Murphy's first five decades last Monday by dressing in black, and forcing him to wear a demeaning sign declaring him, "over the hill." Murphy, who said he suspected something was cooking for his 50th

birthday, had numerous events planned for him. His friends will tell you, though, he's definitely NOT over the hill. The women in black, from left, are Shirley Chapman, Cathy Moore, Dawn Smith, Jill Seitz, Karen Gansher and Lisa Hendrick.

**Tell Them You Read It
In The Standard**

"So you're
turning 38"

We all think
you are
simply great!

—Love,
George
Dana
Julie
and Mandy



JUST REMINISCING

Items taken from the files of The Chelsea Standard

14 Years Ago...

(Continued from page two)

his 25 years in the Chelsea school system.

A survey by a Jackson engineering firm has turned up 94 buildings in Chelsea, including the entire Main street area, which might be used as community fall-out shelters in the event of a national emergency. The local list is part of a county-wide list which pinpointed 300 suitable buildings.

Gambles advertised to be among the first in this area to offer, replicas of the "President's Rocker," which Dr. Travell, Kennedy's doctor, acquired for the president's back ailment. The dark oak version was offered for \$24.98.

34 Years Ago...

Thursday, March 12, 1952—Electronic chimes for the Hammond electric organ at the Salem Grove Methodist church were dedicated at special services held at the church Sunday evening.

Dr. Frank Fitch of Ann Arbor, district superintendent, preached the dedicatory sermon, and Mrs. Vera Panzer played three special numbers on the chimes.

Colds and the flu have made heavy inroads on school attendance the past two weeks. 95 students in grades 7 through 12 having been absent March 4.

A total of 88 ballots were cast in Monday's village election. Elected to office were unopposed People's party candidates: Anton Nielsen, president; Robert B. Devine, clerk; David Strider, treasurer; trustees for two-year terms, George Atkinson, Joseph Dryer, Claude Spiegelberg; trustee for one year, Walter Gage; Edwin Kusch, assessor; Library Board trustees Jean Eaton and Armin Schneider.

At the father and son banquet held at St. Paul's church, Fred Sager, 84, was honored as the oldest father present with a son. His son, Herbert, (of Ann Arbor, and Herbert's twin sons, attended with him. The father with the youngest son was Howard Flint-off, present with his three boys, Peter, Jeffrey and Kim.

To Ronald Clark, son of Mr. and Mrs. Stephen Clark, 422 Madison St., goes this year's honor of being the first person to report to The Standard that a "first robin" of the season had been spotted.

Senior Citizen Birthday Party Slated Friday

Chelsea Senior Citizens Nutrition Center will be expanding their well attended and much enjoyed birthday celebration program to include a luncheon. Senior citizens eligible to attend the March birthday party total 81. An average of 75 senior citizens have attended these parties in other months.

The nutrition center is located at North school, and this month North school teachers with March birthdays invited include Janet Rossi, Beverly Peebles, Jean Meconi, and Eric Smith.

The party takes place Friday, March 14 and will begin with lunch served at 11:45 a.m. Following lunch will be entertainment, and refreshments. A carnation is presented to each person, compliments of Chelsea Greenhouse. Birthday cake is provided by the Chelsea Lioness Club.

Detailed information on employer and employee rights and responsibilities under the Occupational Safety and Health Act is available from any of the agency's 95 field offices, found under "U. S. Government, Department of Labor" telephone listings, according to a Labor Department fact sheet.

JOHNSON, PARISHO & CO., P. C.

Certified Public Accountants
Two locations to serve you
CHELSEA OFFICE
107 1/2 S. Main Street
P.O. Box 251
Ph. 475 9640
ANN ARBOR OFFICE
400 E. Eisenhower Pkwy., Suite J
Ph. 663-4554

WE SERVICE
Personal Corporate Partnership Firms
• ACCOUNTING
• TAX PREPARATION & CONSULTING
• FINANCIAL PLANNING
Appointments available. Ready through Saturday.

Chelsea Charms Take 11 Firsts in TU Open

Fifteen members of the Chelsea Charms Baton Corps completed in a Twirling Unlimited open contest in Carleton on March 2, capturing 43 various awards, including 11 first places.

Chrissy Dunlap (12), drum major and student teacher for the corps, topped the list with impressive, first-place wins in both intermediate solo and fancy strut. She also took second in two-baton.

Kate Steele (8) won the tough beginner division in solo and beginner military strut while taking a second in beginner basic strut and fourth in novice.

Both Whitney Hampton (7) and Amy Feldkamp (11) joined the long list of Chelsea Charms in "basic twirl" wins. They will compete on April 19 at Chelsea High school for the Baton Camp Scholarship. Whitney also placed second in beginner military and special beginner solo while Amy took fourth in special beginner.

Kori White (8) continued her first places with a trophy in intermediate fancy strut, third in advanced solo, and fourth in intermediate solo.

Nine-year-old Michelle Jones placed first in advanced basic strut while Yvonne Scaggs (11) won the trophy in both beginner military and beginner basic struts. Michelle took second in modelling and fourth in intermediate solo.

In boys solo Winston Howard (5) won the first place trophy, took second in advanced military strut, and third in best appearing, instate solo, and advanced solo.

Other Charms to place in various events were Laurie Honbaum (second fancy, third 2-baton); Melany Owens (second special beginner, fourth basic twirl); Rianne Jones (second basic twirl, fifth in model, basic strut, novice); Lindsay McHolme (second model, basic strut, beginner military and third in basic twirl and special beginners); Danielle Clark (third

beginner military); Tiffany Scott (third beginner basic strut, fourth beginner military); Linda Schaffer (fifth novice).

The Chelsea Charms dance twirl team took the fourth-place trophy. The team consists of Linda Schaffer, Amy Feldkamp, Kate Steele, Dani Clark, Tiffany Scott and Whitney Hampton.

The next competition for the corps will be on March 22, followed by "Miss Majorette of Michigan" on April 12 and the Chelsea open on April 19.

Area Students on Academic Honors List At Ferris State

Nearly 1,300 Ferris State College students were included on the academic honors list for the Fall quarter, 1985-86, college officials have announced.

Among the honored students were Kimberly Forner and J. Raymond Steinbach of Chelsea, and Jay W. Eibler of Gregory.

To be eligible, a Ferris student must have compiled a 3.50 grade point average in at least 12 quarter hours of graded work. The total list of 1,223 students includes 134 who earned 4.00 grade point averages, or all A grades.

Wacker's General Store

Grand Opening

NEW...

BEER, WINE & PKG. LIQUOR DEPT.

Over 550 varieties of wine

10% OFF ALL WINE

Both Imported & Domestic



Potatoes . 1lb. 75¢

KING SIZE LOAF

Holsum Bread 89¢

Fri, March 14
Sat., March 15
Sun. P.M. March 16



ALL COKE PRODUCTS

8 1/2 lbs. \$1.99

Check our store for unadvertised specials

G. E. WACKER, INC.

Ph. 428-5344

Corner M-52 & Pleasant Lake Rd., Manchester

Subscribe to The Chelsea Standard

Simplicity

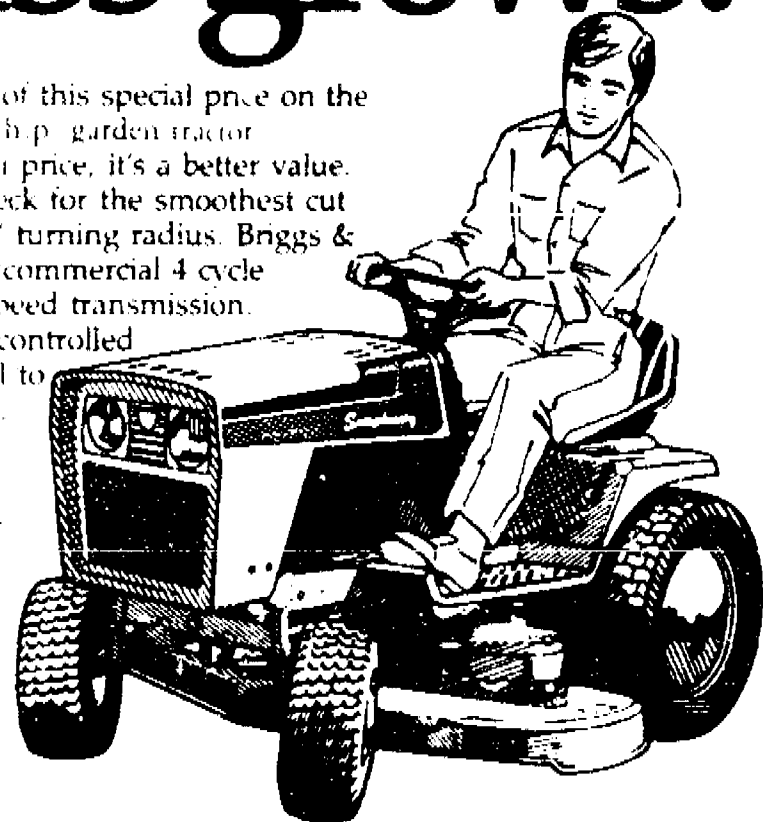
Make hay before the grass grows.

Take advantage of this special price on the Simplicity 6211 11 h.p. garden tractor.

Even at its usual price, it's a better value. Floating mower deck for the smoothest cut possible. Tight 24" turning radius. Briggs & Stratton industrial commercial 4 cycle engine. Variable speed transmission. And an exclusive controlled traction differential to reduce wheel spin.

Feature by feature, it's the best value there is.

And now it's even better. Come in and cash in today.



Special Pre-Season Prices

SAVE \$600

ALL MODELS ARE NOW ON SALE

11 h.p. GARDEN TRACTOR

with 42" Mower

Regular Price \$3,149

SALE PRICE \$2,549

FINANCING AVAILABLE — TRADE-INS WELCOME

CHELSEA HARDWARE

GARDEN 'N' SAW ANNEX

120 S. Main St., Chelsea

Ph. 475-1121

Need a Professional Perm?



Gemini Wants to Help!

PROFESSIONAL PERMS AT A
PRICE EVERYONE CAN AFFORD

\$5.00 OFF

Any Regular \$35 Perm

Coupon good March 12-26, 1986

at

GEMINI FAMILY HAIR CARE

Gemini

FAMILY HAIR CARE

107 W. MIDDLE ST.

CHELSEA

475-7006

Mon.-Fri., 8:30 to 8:00—Sat. 8:00 to 3:30



VOTING WAS A FAMILY AFFAIR last Monday as this bright-eyed little youngster helps this unidentified Chelsea voter make his selections in the village elections. It was the largest turnout for a village election in recent memory, as the sewage plant bonding issue, and the mayoral election, helped boost the numbers.

Subscribe to The Chelsea Standard!

High School Scheduling To Start Monday

During the week of March 17, students at Chelsea High school will be requested to make their course requests for the 1986-87 school year. This is an extremely important time because the master schedule for next year will be built upon these course requests. This means that resources at the high school, both human and financial, will be allocated based upon what the students need and want to take.

Principal John Williams requests the assistance of parents in this procedure. He says that it is very important that the parents are aware of their students' career directions and select courses accordingly.

Beginning on Monday, March 17, counselors at the high school will begin entering classes to explain the procedure and explain the information to all students. This information includes the Course Description Booklet and an appropriate course request sheet, a different sheet for each grade.

Along with the counselors at Beach Middle school, high school counselors Sue Carter, Gene LaFave and Chris Dimarin will also visit the eighth grade classes on Thursday, March 28. There will be an assembly at Beach at the end of that day for representatives of high school programs to explain their courses to the eighth graders.

As part of this entire process, there has been a meeting scheduled on Monday, March 24 at 7 p.m. in the Beach School Cafeteria to which all eighth graders and their parents are invited. There will be representatives from each of the high school programs present to describe the procedure and provide further information to make the best choice possible.

The Chelsea Standard

Section 2

Chelsea, Michigan, Wednesday, March 12, 1986

Pages 9-22



IF YOU WENT DOWNTOWN TO VOTE or shop last Monday, it was hard to miss all the "Happy Birthday Dan Murphy" signs, as the congenial, long-time pharmacist at Chelsea Pharmacy celebrated his 50th on Monday. Another big sign graced the front of The Village Bakery across the street. The occasion was made even

more festive by his friends, who had numerous events planned for the occasion. Incidentally, that man to the left is former village president Charles Ritter, who passed out campaign materials much of the day.

Symphony, Freshman Bands Receive Top Ratings in District

Chelsea High school bands were once again one of the top bands to play at the District Band Festival at Saline High school last Friday evening.

Both the symphony band and the freshman band received straight "1" ratings, the highest possible, in every category.

According to band director Bill Gourley, this makes the 11th straight year Chelsea bands have received straight 1 marks.

The bands were not ranked against each other.

"We had an enthusiastic turnout of family and other supporters," Gourley said. "I can't remember when we've had so many people turn out for the festival. When the symphony

band was done they gave us a standing ovation. It was like a crowd getting behind the football team in the fourth quarter."

One of the four judges at the festival was Bruce Galbraith, band director at Chelsea High school in the 1980's, and former assistant principal.

"Bruce's comment about the band was, 'I'm glad you chose such tough works. Your courage is admirable,'" Gourley said.

The symphony band played music in the "AA" category, the most difficult category, usually chosen by much larger high schools and even colleges. Their numbers included, "Pineapple Poll," by Gilbert and Sullivan; "Washington Post March," by John Philip Sousa; and "Marrakech Bazaar," by Stan Applebaum.

There was also a sight-reading section in which the band was given a march and a concert selection, given seven minutes to study it (without playing it), then asked to play them.

"The judges said the band had a tremendous level of ability and potential," Gourley said.

"One of them said 'what made this exciting to me was the excitement you generate with your

style and interpretation of these pieces.'"

The freshman band, one of the few purely freshman bands at the festival, also drew rave reviews. They competed in a division that included bands with upperclassmen. Their three selections were "Monterey March," by Carl King; "Theme and Montage," by Mike Leckrone; and "Variations on an English Folk Song," by Claude Smith. The selections were from the "B" category, also substantially more difficult than what most freshman bands attempt to play.

The freshmen also impressed the judges with their sight-reading abilities.

"One of the judges said he ad-

mired, 'the technical facility of your (freshmen)'," Gourley said.

Dr. Handelsman Competes in Indoor Track, Field Meet

Dr. Lawrence Handelsman recently competed in the Midwest Masters Indoor Track and Field Championships in Cincinnati, O. where he placed second in the 600-yard dash in the 40-44 year age group. Doctor Handelsman has been a member of the Chelsea Community Hospital medical staff for 10 years currently serving as medical director for rehabilitation services.

On
March 18, 1986

DEANN
COLLINS
will be
Sweet 16

Call her and wish
her a happy day.



—Love
Mom & Bob

Getting Down to Business for \$9 a Month.

Citizens Trust Business Checking.

Average Available Business Checking Balance	Monthly Service Charge
\$5000 or more	\$0
\$1 to \$4999	\$9

How much are you paying for a business checking account at your bank? As much as \$20 some months? Thirty? Fifty?

If you open an account at Citizens Trust, you'll pay no more than \$9 a month. Any month. And you could, with ease, maintain your account for free.

You see, we charge you *only* if your available balance falls below \$5000.



CitizensTrust
The Bank of Trust

DOWNTOWN ANN ARBOR • AUGUSTA TOWNSHIP • BRIGHTON • CHELSEA • LODI TOWNSHIP
PLYMOUTH PARK, ANN ARBOR • SALINE • S. STATE STREET, ANN ARBOR

MEMBER FDIC

If you keep an average available monthly balance of between \$1 and \$4999 in your account, you pay just \$9 a month service fee. And a balance of \$5000 or more in your account means you pay no service charges at all.

That's a welcome change from the policies of some area banks who charge you for each deposit you make, every check you write, and a monthly service fee to boot.

Next month, when your monthly statement arrives, sit down and figure out how much your account is costing your business. Then move your money to Citizens Trust. Because getting down to business shouldn't cost more than \$9 a month.

FORD

MERCURY

Michigan's Oldest Ford Dealer

Open Mon.-Thurs. 'til 9, Sat. 'til 1 p.m. • SERVICE OPEN SATURDAY, TOO.

CHLSEA Just minutes away, I-94 to RR-42 North 1 1/2 miles downtown 475-1301

1986 TAURUS WAGON '10,299' 	1986 EXP '6,999'
7.7% APR ON SELECT MODELS**	
1986 T-BIRD '9,796' 	1986 MUSTANG '6,695'
9.9% APR ON SELECT MODELS**	
1986 TEMPO '6,999' 	1986 RANGER '5,795'
9.9% APR ON ALL TEMPOS**	
1986 AEROSTAR '8,650' 	1986 ESCORT '5,680'
7.7% APR ON SELECT MODELS**	

PALMER PRICED

SPORTS



Bulldog Cagers Bow Out of District Tourney In 46-44 Loss to Dexter

Chelsea Bulldogs bowed out of the 1985-86 basketball season with their seventh consecutive loss, and third in a row to the Dexter Dreadnaughts, 46-44, in the first round of the district tournament last Tuesday at Jackson Lamm Christi.

The game, according to both Chelsea coach Robin Rosenstreter and Dexter coach Jim McCormack, featured tentative play by both teams, although both teams shot 45 percent from the field.

Once again, the Bulldogs had their chances to pull the game out in the final seconds. At the :38 mark, and Chelsea down by one point, Dexter's Jeff Bishop went to the foul line for a one-and-one opportunity. After he missed the shot, Scott Magnuson, the Dexter center, rebounded the miss and put it back in for a three-point Dreadnaught lead.

At the :12 mark, the Bulldogs were down by two points after a field goal by Chelsea and a free throw by Dexter.

"We got off a couple of shots at the end, but they were very deep," Rosenstreter said.

"We lost the game because of the same thing that's been hampering us all year. We just don't seem to have any intensity after the first quarter."

Rosenstreter tempered his remark by saying that the intensity of senior guard Ray Spencer, "was keeping us in the game the second half," and that senior guard Ken Martin played, "his best game of the year."

The lack of intensity, or,

perhaps, lack of concentration, showed up in two key statistics. Chelsea shot a dismal 6-15 from the free throw line (40 percent), and gave the ball away 23 times on turnovers. They made 1-5 attempts in the first half, with 12 turnovers. Those 12 turnovers yielded the Dreadnaughts 19 points.

Chelsea missed three one-and-one attempts in the second half. The Bulldogs took an early 11-6 lead, but eight unanswered points

gave Dexter a lead they would never relinquish. By the end of the first half, the Dreadnaughts had a 25-19 lead.

Junior Mark Barcia led both teams with 13 points. Martin had 10 points, all on field goals. Todd Starkey followed with seven points, Dan Bellam and Spencer each had six, and Jeff Harvey finished with two.

The Bulldogs wound up with a 7-14 over-all record.

Varsity Swim Team 11th in State Meet

Chelsea varsity swim team finished 11th at the class B state swim meet in Grand Rapids last week-end.

52 teams competed. All-state honors went to the 300-yard medley relay team of Craig Miller, Matt Down, Scott Pryor and Jeff Nemeth as they took fourth place.

Pryor had the highest individual finish, with a seventh place in the 100-yard butterfly.

Also scoring was Tyler Lewis, with an 11th place in the diving; Nemeth, with a 10th place in the 100-yard backstroke; and Miller, with an 11th place in the 100-yard backstroke.

The 400-yard freestyle relay team finished in ninth place. Team members were Nemeth,

Down, Dan Degener, and Pryor. "Although we swam as hard as we could, the team and I felt we could have done better," said Chelsea coach Mike Keeler.

"I was pleased with the results of the medley relay. Over-all, the meet itself was generally slow, and we did have some kids sick."

"Looking to next year, we will have to replace some valuable people in Craig Miller, Scott Pryor, Dan Degener and Mark Westhoven. They've done a lot for Chelsea swimming and they'll be missed."

Dates Set For Soccer Registration

Chelsea youth soccer program begins April 19 for children 6-16.

Registration for the program will be held from 10 a.m. to noon on Saturday, March 22 at the Community Education Office at Chelsea High school.

If that time is inconvenient, you may also register at the community education office during regular week-day hours prior to March 22. Registration will also be accepted for one week after March 22.

For the age 6-12 league, cost is \$10 for participants from Sylvan, Dexter, Lyndon and Lima townships. For all others, the fee is \$15.

For the age 13-16 league, fees are \$15 for Sylvan, Lima, Dexter and Lyndon township residents, and \$20 for all others.

The league will run for six weeks, ending on May 26. Games will be played Saturday mornings at 10, on the soccer field next to St. Mary's Catholic church on Old US-12.

"Duck Extravaganza" Outing Set Saturday At Independence Lake

The "Duck, Extravaganza," will be the subject of an outing at Independence Lake Saturday, March 23.

Each year thousands of ducks make a stop at Independence Lake. Parks naturalist Matt Heumann can teach you to identify them by their color, shape and habits.

Heumann urges participants to bring a bird book, binoculars, and/or a telescope. Warm dress for standing in place for long periods is advised.

The outing will begin at 10 a.m.

1985-86 FRESHMAN BASKETBALL TEAM finished the season with a 5-13 over-all record. Many of the boys will become next year's JV's. In the front row, from left, are John Collins, coach Dave Queller, and Larry Mui. In the back row, from left, are Jason Over-

dorf, Scott Schmitt, Mike Kuchmow, Jeff Marshall, Mark Larson, David White, Loren Kerner, David Adams, and manager Jason Adams.

Aquatic Club Swims to Season's Best Effort

Chelsea Aquatic Club put together its best effort of the season for their final dual meet, but still came up short to the always powerful Ann Arbor YMCA. The final score was 394 to 317.

Coaches Jon Oesterle and Dave Brinklow were pleased with the team's performance.

"This was the closest we have come to Ann Arbor in a long time," said Brinklow.

"We were stronger in the older age groups and they were stronger in the younger ones. It just came out in their favor at the end."

Swimming for Chelsea were: 8-and-under boys: Paul Monti, Chad Brown, Matt McVittie, Raymond Hatch, Thomas Paine, and Steven Thiel.

8-and-under girls: Dena Walker, Betsy Schmunk, Carey Schuler, Christie Linsky, Nicki Lane, Amy Herrst, Christina Gibson, Shalet Renaud.

9-and-10 boys: Joe Cesarz, Dana Schmunk, Jason McVittie, Colby Skelton, Steven Brock, Matt Montagne, Casey Schuler, Corey Brown, Matt Fischer, Bryndon Skelton, Scott Dale, Kevin Lane, Chris Gibson, Andy

Wetzel, Dan Zatkowich, Mark Kemmer, Vince Stahl.

9-and-10 girls: Melissa Ther, Monica Hansen, Sandy Schmitt, Christin McLaughlin, Christy Gillespie, Becky Pryor, Megan Stelstra, Sara Henry, Brian Street, Lesley Berg, Jennifer Ceccacci, Felicia Hermosillo, Gretchen Stahl.

11-and-12 boys: Rob Ciera, Joe Bartheman, Tom Poulter, Alan Hewer, Fernando Hermosillo, Greg Garen.

11-and-12 girls: Sarah Gegenheimer, Michelle Hojo, Becky Harms, Erica Bougholt, Melanie Broughton, Sara Nye, Jennifer McEachern, Jessica Payne, Shana Vusters, Colleen Schenphorn, Carmen Smith, Jennifer Koch, Kristi Smith, Mariana Street, Kelly Bellus.

13-and-14 boys: Von Acker, John Alford, Chris Birtles, Brian Brock, Holden Harris, Mike Hall, David Oesterle, Brett Padgett, Todd Redding, Rob Northrup, Wally Schmidt, Scott Marsh, Garth Girard.

13-and-14 girls: Jill Nowacki, Charity Strong, Debbie West, Deanna Bolanowski, Nicole Fletcher, Melissa Johnson.

PATRICK TAYLOR, an eighth grader at Beach Middle school, who wrestles in the Dexter Wrestling Club, won a first-place medal in the 165-pound weight class at the Capital City Classic Wrestling Tournament in Lansing March 8. Patrick pinned all five of his opponents.

Wrestling Club Members Compete In Lansing Meet

Eleven wrestlers from the Chelsea Wrestling Club competed last week-end at Lansing-Sexton High school.

First-place medals were won by Jeremy Feldkamp, John Bobo and Matt Powell.

Bryndon Skelton won a second-place medal.

Eric Hanna took a third-place medal.

Dean Sutherland finished with a fourth-place medal.

Other participants included Alan Hanna, Jeff Stump, Colby Skelton, Craig McCalla and Kevin McCalla.

This week-end the team will travel to Parma-Western.

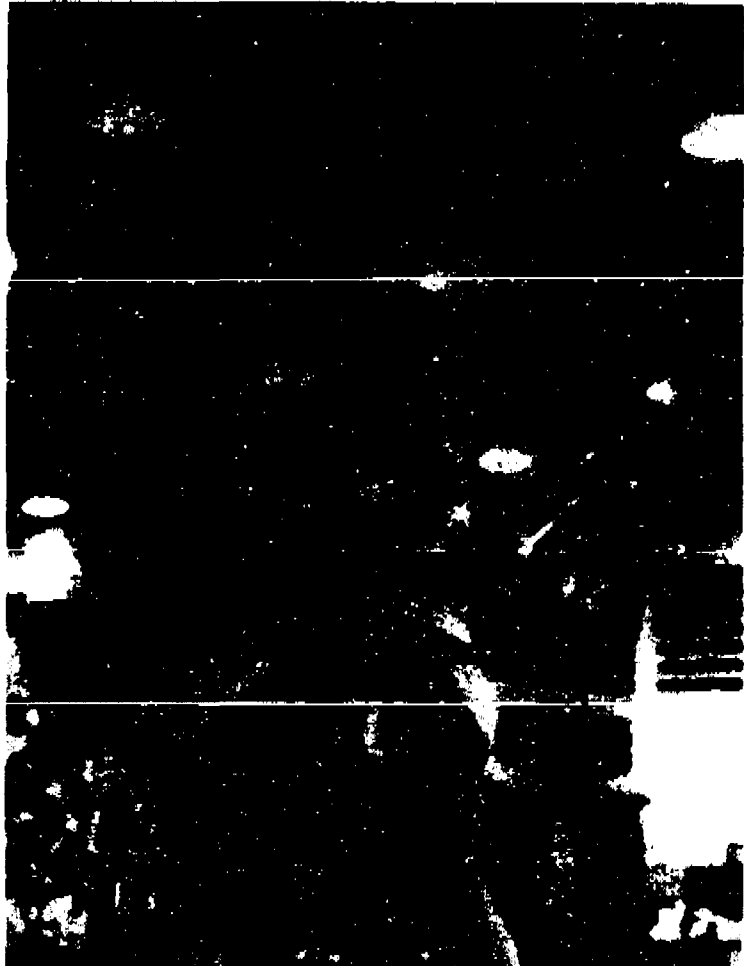
The team is coached by Howard McCalla, and is sponsored by the Chelsea Recreation Department.

Charlie Waller Named 1985 State Coach of the Year

Charles Waller, teacher and girls softball coach at Chelsea High school, will be honored as the High School Coaches Association 1985 Coach of the Year.

The Chelsea girls softball team were 1985 Class B State champions. This is the second time that Waller has received this award. He was Coach of the Year in 1982, when his softball team were 1982 Class B State champions.

Waller is a social studies teacher at Chelsea High school, and has taught in the Chelsea schools since 1969.



SCOTT MAGNUSON, the Dexter center, (shown above in an earlier game with the Bulldogs) grabbed an offensive rebound from a missed free throw and hit a short jumper with :38 to go for one of the key plays in Dexter's win over the Bulldogs in the first round of the district tournament. The score was 46-44. It was the third straight loss for the Bulldogs at the hands of the Dreadnaughts this season.

Wacker's General Store Grand Opening

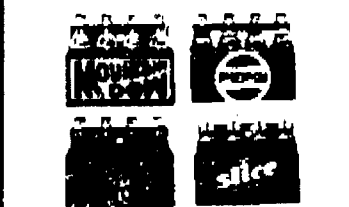
NEW...

BEER, WINE & PKG. LIQUOR DEPT.

Over 550 varieties of wine

10% OFF ALL WINE

Both Imported & Domestic



Potatoes . 10lb. 75¢

KING SIZE LOAF

Holsum Bread 89¢

Fri, March 14
Sat., March 15
Sun. P.M. March 16

ALL PEPSI PRODUCTS
8 for \$1.99 plus deposit

Check our store for unadvertised specials

G. E. WACKER, INC.

Ph. 428-8346
Corner M-52 & Pleasant Lake Rd., Manchester

SPORTSMAN'S Is Now Featuring DINNER SPECIALS

Tuesday Pot-Pourri
ALL YOU CAN EAT WED., THURS., FRI.
Wednesday Chicken
Thursday Barbecued Ribs
Friday Fish Dinner
(Fried or Baked)
Saturday Prime Rib

SPORTSMAN'S
8089 Main St., Dexter
Ph. 426-2290

5 reasons to choose our Individual Retirement Account

1. Tax savings year after year.
2. A monthly retirement income you can't outlive.
3. Earn high interest.
4. No administrative fees.
5. Personal, dependable service from your Farm Bureau Insurance agent.

The bottom line is simple: FB Annuity Company can guarantee you a generous retirement income for as long as you live, continuous tax savings, competitive interest rates, and knowledgeable service. Call your local Farm Bureau Insurance agent today.



DAVE ROWI
121 S. Main, Chelsea, Mich. 48118
(313) 475-9184

Making your future a little more predictable.

FARM BUREAU INSURANCE GROUP

Member of the Farm Bureau Insurance Group

BOWLING

Senior Fun Time

Standings as of March 5	W	L
All Bad Lark	46	12
Shelton	45	13
Howling Spotters	40	18
Go Outters	36	22
Carl & Chris	32	26
Baggins and Co	28	30
2 1/2 & B	24	34
Goldensons & Jean	20	38
Tom Pans	16	42
Cherry & Bob	12	46
High Rollers	8	50
Handy Dandy	4	54

Chelsea Suburban League

Standings as of March 5	W	L
Edwards Jewelry	121	46
Pine Key	118	49
Chelsea Lanes	112	55
D. D. Dinning	107	60
Horus Valley Optical	102	65
After Hours Lark Service	97	70
Chelsea Kyngham	92	75
Big Boy	87	80
Chelsea Assoc. Builders	82	85
Greenlee	77	90
Chelsea Pharmacy	72	95
Woodford	67	100

Leisure Time League

Standings as of March 5	W	L
Up & Down	64	36
Midlife	61	39
Sudden Death	58	42
Shut-A-Bone	55	45
Lark In	52	48
Lucky Strikers	49	51
4 of a Kind	46	54
Sweetrolls	43	57
The Favorites	40	60
The Monkeys	37	63
Low Down	34	66
Mamas & Mams	31	69

Wednesday Outlets

Standings as of March 5

W	L
121	46
118	49
112	55
107	60
102	65
97	70
92	75
87	80
82	85
77	90
72	95
67	100

Tri-City Mixed League

Standings as of March 7	W	L
Triangle Towing	34	19
Barnett & Westcott	31	22
Wayne Food & Spirits	28	25
Zoo's	25	28
The Woodshed	22	31
The Village Top	19	34
The Food Bites	16	37
St. Louis & Ritchie	13	40
Manchester Shoppers	10	43
Toddler Roofing	7	46
Chesapeake Lark	4	49
Chelsea Lanes	1	52

Super Six League

Standings as of March 5

W	L
30	20
27	23
24	26
21	29
18	32
15	35
12	38
9	41
6	44
3	47

Chelsea Bantams

Standings as of March 5

W	L
82	18
78	22
74	26
70	30
66	34
62	38
58	42
54	46
50	50

Bantam Family League

Standings as of March 5

W	L
64	36
61	39
58	42
55	45
52	48
49	51
46	54
43	57
40	60

Chelsea Lanes Mixed

Standings as of March 7	W	L
Pro Fear	111	28
Ann Arbor Outlets	107	32
Shelton	102	37
Handy Hardware	97	42
Gold's Gym	92	47
Barb's Bargains	87	52
Red Fear	82	57
Pro Busters	77	62
Shelton	72	67
The Lark	67	72
Chelsea Lanes	62	77
Handy Hardware	57	82
Shelton	52	87

Rolling Pin League

Standings as of March 4

W	L
46	12
45	13
40	18
36	22
32	26
28	30
24	34
20	38
16	42
12	46

Chelsea Preps

Standings as of March 5

W	L
137	46
134	49
131	52
128	55
125	58
122	61
119	64
116	67
113	70

Chelsea Preps

Standings as of March 5

W	L
137	46
134	49
131	52
128	55
125	58
122	61
119	64
116	67
113	70

Chelsea Preps

Standings as of March 5

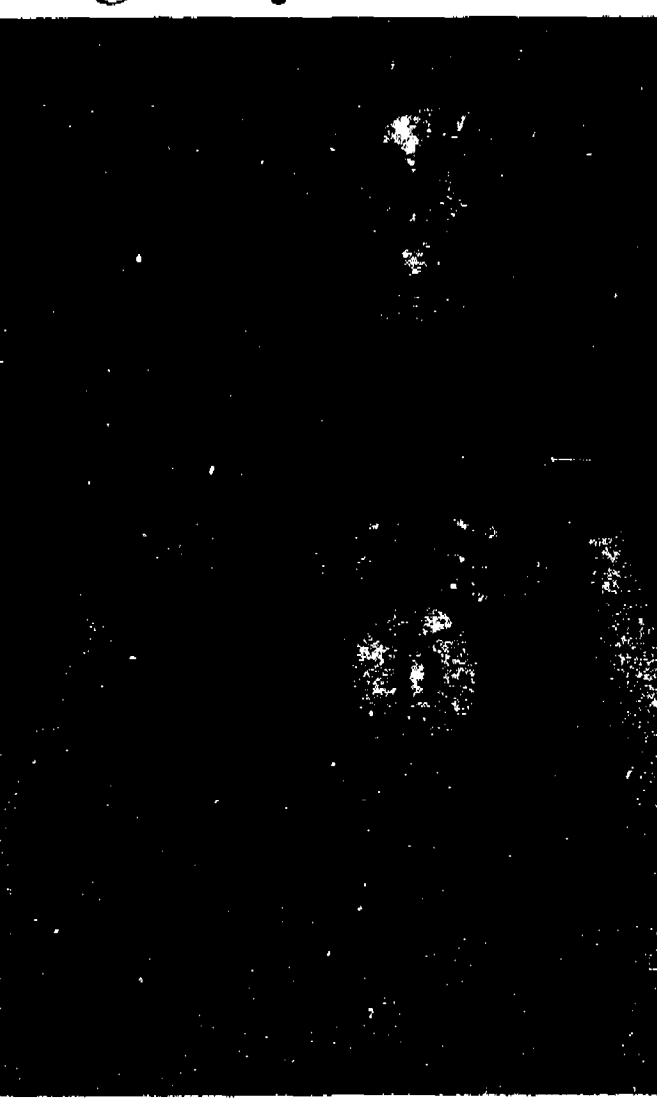
W	L
137	46
134	49
131	52
128	55
125	58
122	61
119	64
116	67
113	70

Chelsea Preps

Standings as of March 5

W	L
137	46
134	49
131	52
128	55
125	58
122	61
119	64
116	67
113	70

Cager of the Week



PLAYER OF THE WEEK is junior forward Marty Poljan, who finished his first year on the varsity squad. A gifted athlete, Marty hadn't played organized basketball since the high leagues, yet made the varsity team. Last year he concentrated on wrestling, but decided he wanted to "do something different." Marty's strong suit is rebounding, and he was dependable in that department as a sub off coach John Hunsicker's bench. Last fall, Marty was switched from offensive guard to tight end on Gene LaFave's football team, and quickly showed his promise at that demanding position. He'll likely be one of the standouts on next year's team. He was also an outside linebacker. Marty is a avid outdoorsman, and likes to hunt and fish. After graduation, Marty said he'd like to pursue a business career. He's the son of Richard and Kay Poljan, 13875 McKinley Rd., and a member of St. Mary's Catholic church. His brother, Rick, will be playing his fourth year of football at Central Michigan University this fall. One sister, Mary Kay, is a medical student at Michigan State University, while his other sister, Amy, is attending Western Michigan University.

Good Steelhead Season Expected in Michigan

Spring steelhead stream action should be improved in Michigan for the third straight year due primarily to increased plantings and improved habitat projects, reports AAA Michigan. The biggest improvements should be in West Michigan from the Indiana line to Traverse City and along the state's eastern shore from Flat Rock to Port Austin in the Thumb. Department of Natural Resources officials predict that steelhead results elsewhere should be as good as 1985.

The steelhead's natural productivity in Great Lakes tributaries is outstripping the Pacific Ocean's tributaries on the West Coast, long considered the nation's best for steelhead fishing. A possible problem this season, according to AAA Michigan, would be high water or flooding from the spring thaw which would make it difficult for the fish to find the bait and the anglers to wade in the streams. Peak runs should start in late March and continue through mid-April in Southeast Michigan, from early April to early May in West Michigan, mid-April to early May in East Michigan and mid-April to mid-May in the Upper Peninsula.

Water temperature is a key factor in drawing steelhead into the streams and runs generally begin when water temperatures reach 50 to 60 degrees. In the spring, the best bait is spawn bags, but steelhead also hit wigglers, minnows, nightcrawlers and salmon eggs. A steelhead's age, the severity of preceding winters and the amount of time it spent in one of the Great Lakes or a stream are major factors in the weight of the fish. Because food is more readily available in the Great Lakes, those fish generally are bigger. Natural reproduction is impeded in times of bad weather. Steelhead planted in 1984 should weigh between 2½ and 5

SPORTS NOTES

Although March might be the cruelest month, if you're like me, this is the month you reach sports nirvana. Who cares what the weather is like as long as you have a television and a warm place to sit. It's the end of the college basketball season.

No drug could ever match the feeling a basketball junky gets when the NCAA basketball tournament rolls around. It's simply the finest sports spectacle anywhere. 64 teams compete to find out who's the best. The champion has to win six straight games against the best competition. I feel sorry for the basketball fanatic who doesn't have cable television. Cable TV and a VCR is even better. Two TV's and a VCR might be the best combination. That way your family can toss you and your dog in the den, with a closet full of munchies and your favorite beverage, while they go watch "The Cosby Show." You can grunt and groan and snort and even yell, "oh my," like Dick Enderg and not disturb a soul.

The fanatic needs cable simply because ESPN shows games almost every night, while network TV shows all those boring sitcoms and police dramas, with, perhaps, a game on tape delay after the local news. The fanatic needs a VCR to catch all those games that are broadcast in the middle of the night. Yes, even a fanatic has to sleep sometime, although it might be sitting up in a recliner.

The fanatic also needs ESPN to hear Dick Vitale, perhaps the most knowledgeable basketball man in television. While Vitale may have failed as a coach, he knows the game. But, better yet, he knows the players. He's like a kid who has memorized lifetime batting averages of all the best baseball players. He also is more consistently right than the others.

I must be the most fortunate basketball fanatic alive because my wife enjoys the sport as much as I do. By golly, she even likes to watch the NBA in October, which is even difficult for me to understand. If a woman were to become pregnant in the first week of October, there's a fair chance she would deliver before the NBA season is complete.

This year's tournament promises to be one of the best in the last decade simply because there isn't a dominant team, as Georgetown has been the last three years. Who makes the final four is anyone's guess.

This will be the first year for a shot clock, which will prevent the late-game stall, a tactic North Carolina coach Dean Smith used for years with his famous "four corners." Many teams have a habit of playing conservative basketball in tournament play. If the stall were allowed, Duke might end up in a 10-8 game as All-American guard Johnny Dawkins could simply dribble around all night long.

The history of basketball, and the post-season tournaments, has been full of improbable twists and turns. A few of them follow. (Much of the following comes from a wonderful book for basketball fans called "The Illustrated History of Basketball," by Larry Fox.

The NIT, or National Invitational Tournament, pre-dated the NCAA tournament, and for years was the more prestigious of the two, mostly because the payouts to competing teams were larger. The first NIT was played in 1933, and was dubbed the "Rose Bowl" of basketball. That year, Colorado beat Temple in the finals, 60-36. Byron "Whizzer" White, later a supreme court justice, played in that game. In 1947, coach Frank Chamberlain of the University of Kansas prepared his team for the NIT by holding practice on a small court with lighting smudge pots. The idea was that Madison Square Garden would be filled with cigar smoke.

In 1944, the University of Utah became the first team to play in both tournaments. After being eliminated in one of the early rounds of the NIT (partly because they lost their basketball shoes on their way), the team was asked to take the place of the University of Arkansas in the NCAA, because several of the Razorbacks had been involved in an auto accident. The Utes went on to defeat Dartmouth in overtime in the finals of the NCAA, led by 6'1" center Fred Sheffield. 42-40. They later defeated St. John's, the winner of the NIT, 43-30.

1944 also featured one of the first battles of the giants. Paul Kurland, a 7'0" center for Oklahoma A&M played against 6'10" George Mikan of DePaul in the semis of the NIT. At that time it was more common to have a 6'2" center. Due to the play of Kurland and Mikan, the rule against goal-tending was instituted.

In the 1950's, Kentucky had its record of 129 straight home court wins broken by Georgia Tech, a team with a losing record. In 1953 was the first broadcast of an NCAA title game. With Chamberlain quit the University of Kansas to play for the Harlem Globetrotters. He was upset that the slowdown game employed by opposing teams was ruining his game.

In the 1950's Ohio State center Jerry Lucas was the first college player ever to win five statistical categories during his career. He won field goal percentage three times, and rebounding twice. The word "cager" originated at the turn of the century when the first professional basketball league put wire, or net cages around the courts to keep the ball in play. Visiting players often complained that zealous fans would stick them with hat pins or burn them with cigars when they were trapped against the nets.

Under the original rules of the game, the first player to touch a ball after it went out of bounds was allowed to throw it in. It was not uncommon for players to run over fans for the ball, and often the ball would be batted up to the balcony track that encircled most gymnasiums. Dr. James Naismith, the inventor of the game, most definitely had women in mind. He said it is one of the few games they can play that is not a strain on the nervous system. He also said, it gives "health without involving severe mental strain." Quite a liberal fellow. I'd say.

Subscribe to The Chelsea Standard!

DRAINS and SEWERS CLEANED ELECTRICALLY

SINKS
SUMPS
TOILETS

FLOOR
DRAINS

MAIN
LINES

STORM
SEWERS

PROMPT SERVICE

**SEPTIC TANKS-Cleaned, Installed, Repaired
DRAINFIELD & OTHER EXCAVATING**

•RESIDENTIAL •COMMERCIAL •INDUSTRIAL

BOLLINGER SANITATION SERVICE

PHONE (313) 475-2097

OPEN BOWLING

Sunday*... 11:30 a.m. - 5:30 p.m.
Monday..... 12:00 noon - 6:00 p.m.
Tuesday..... 9:00 a.m. - 5:30 p.m.
10 p.m. - 12 midnight
Wednesday.... 12 noon - 6:00 p.m.
9 p.m. - 12 midnight
Thursday..... 12 noon - 6:00 p.m.
9 p.m. - 2:00 a.m.
Friday..... 12 noon - 6:30 p.m.
9 p.m. - 12 midnight
Saturday*... 8:30 a.m. - 12 midnight

*Open bowling hours change because of special events * Please call ahead.

Chelsea Lanes, Inc.

Featuring the Mark IV Lounge
1180 S. Main St., Chelsea Ph. 475-8141

John Deere 20-inch trimming mower

The quality won't surprise you, but the price might

John Deere quality at an economical price! 3½ hp push type with contoured steel deck and adjustable folding handlebar. All controls, including recoil start, on handle. Cutting heights, 1½" to 3½". Engine blade safety stop. Hinged rear guard. Side bagger available. See us about this value.

HURON FARM SUPPLY

426-8847 - 426-4086
8250 Dexter-Chelsea Rd. Dexter



A ROCK-A-THON to raise money for senior scholarships was held last Friday and Saturday from noon 'til noon at Chelsea High school, sponsored by the National Honor Society. Society members and friends secured pledges of money for every hour they rocked, in their favorite rocking chairs. These young women had a good yakk

during the afternoon, as they were giddy with the thought of having to spend another 20 hours or so in the cafeteria. From left are junior Elizabeth Maerz, senior Angela Brand, and juniors Cherece Noble, Kim Chatter, Jennifer Boughton, and Stacie Keizer.

Amateur Radio Emergency Volunteers Serve County

By proclamation of Merit Lou Murray, who chairs the Washtenaw County Board of Commissioners, March 9-15 has been declared Amateur Radio Emergency Services/Radio Amateur Civil Emergency Services Week.

Washtenaw county is fortunate to have a dedicated group of volunteers who service the community in time of need.

Washtenaw County Office of Emergency Management has 430 amateur radio operators in the county registered with the WCEM office. Each of the 430 operators has passed strict Federal Communications Commission tests to obtain his or her license.

Of the 430, 85 have taken additional training to become members of the Amateur Radio Emergency Services (ARES). Amateur Radio Emergency Services specifically co-ordinates and assists communities with special projects and Washtenaw county government in times of emergency.

ARES has provided a valuable assist to public safety in spotting and reporting severe weather phenomena.

Of the 86 ARES members, 36 have also taken a test administered by WCEM and validated by the Federal Emergency Management Agency, attended additional local training and have sworn to serve in times of national emergency, thereby becoming a Radio Amateur Civil Emergency Services (RACES) member.

During times of national emergency, only RACES members are permitted to use the Amateur Radio Communications air-waves.

All RACES members in this county carry identification assigned by Michigan's Governor James Blanchard and by Daniel R. Harsh, director of WCEM.

This identification exhibits the high level of dedication and service of the RACES member to the community.

The training and skills of amateur radio operators makes them a national resource in times of need. They may be called on by our government to help in any communications emergency.

Amateur radio operators, however, don't wait for emergencies to get involved in their communities. Many individual amateur radio organizations work on a regular basis with a variety of community organizations.

In Washtenaw county, they serve requests by local communities for special event communications functions.

ARES includes licensed amateurs who have voluntarily registered their qualifications and equipment for communications duty of public service when an emergency condition or community need arises.

Local emergency co-ordinator for both ARES and RACES is Robert Kramer of Ypsilanti. His assistants are Robert Schantz, Chelsea; Thomas Blethen, Dexter (who also serves as state deputy director for RACES); Adam Paul Benner and David Rasche, Ann Arbor; Richard Hill, Plymouth.

Countless hours of volunteer service are provided by ARES/RACES personnel, both in planning and preparation for emergencies and actual activations. WCEM averages 36 partial activations each year, and the ARES/RACES group has 100-percent participation. They also have a 100-percent participation rating in all annual tests and exercises that evaluate readiness potential.

ARES has provided a valuable assist to public safety in spotting and reporting severe weather phenomena.

Of the 86 ARES members, 36 have also taken a test administered by WCEM and validated by the Federal Emergency Management Agency, attended additional local training and have sworn to serve in times of national emergency, thereby becoming a Radio Amateur Civil Emergency Services (RACES) member.

During times of national emergency, only RACES members are permitted to use the Amateur Radio Communications air-waves.

All RACES members in this county carry identification assigned by Michigan's Governor James Blanchard and by Daniel R. Harsh, director of WCEM.

Outdoor Report

From DNR District Office in Jackson

Wildlife . . .

Chinese wildlife biologists who are fighting to save the panda will be touring Michigan with a full color pictorial exhibit of these animals and their lifestyles. DNR Wildlife personnel have established a special Panda Gift Fund to raise money to assist the Chinese to bring back this endangered species. Only about 1,000 pandas survive today, mostly in reserved areas of Michigan's sister State in Sichuan, China. DNR biologist will join the Chinese biologists on their tour and will display a donation box "Permit for Pandas" at these exhibits. Interested persons may also send contributions to: Panda Gift Fund, DNR Administration Services Division, Box 30028, Lansing 48909.

The Panda exhibit will be on display in this area at the following times:

March 17-19—Agriculture & Natural Resources (ANR) Week, Michigan State University, Wells Hall, East Lansing.

March 21-23—Grand Rapids Sport & Boat Show, Grand Center, 245 Monroe, Grand Rapids.

Fisheries . . .

Due to the fluctuating weather, ice on area lakes may be unsafe. Reports of large pike being taken on Coldwater and Devils Lakes have been received in this office.

Lima Township Board Proceedings

Regular Meeting
March 3, 1986

The regular meeting of the Lima Township Board was called to order at 8:00 on March 3, 1986 by Supervisor Bauer and opened with the Pledge to the Flag.

Present were Supervisor Bauer, Clerk Barera, Treasurer Messman, Trustees Heller and Trinkle and Zoning Inspector Godel.

Minutes of the February 3 meeting were approved.

The treasurer's report was given.

Resolution from the Washtenaw County Road Commission stated Trinkle Road between Freer and Fletcher is a no through truck route.

Zoning inspections were discussed by Inspector Godel.

Motion approved to allow Zoning Inspector to seek legal action with regard to non-compliance as pertains to a red tagging of unlicensed vehicles.

Approved motion to allow the supervisor to use her discretion on the following for all tribunal appeals for 1986: Request contracted township appraiser reappraise property(s) under appeal, to assure residents have been given benefit of appraisal, supervisor may hire fee appraiser for second appraisal and/or request State Tax Commission personnel make second appraisal, and request township attorney be respondent for the township.

Approved motion to revoke the Forest Preservation Agreement on five acres of a 40 acre parcel 07-36-400-005 due to the farm being split and sold.

Approved motion to allow Joseph Wheeler to break his open space agreement with the township to enable the sale of his property.

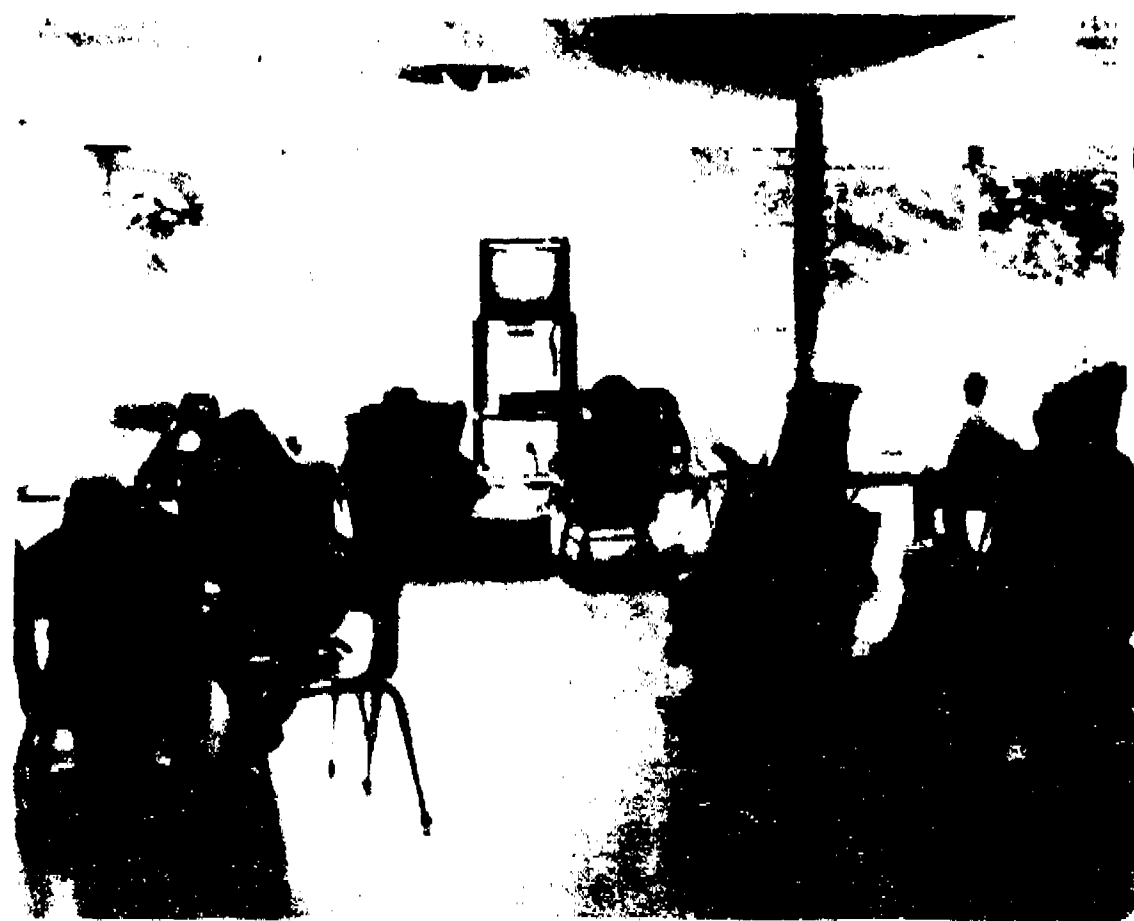
Approved motion to increase mileage to .21 per mile, in compliance with direction from the IRS.

Settlement day is March 17, at 8:00 p.m.

The Annual Meeting is March 29 at 1:00 p.m.

Approved payment of bills as presented.

Meeting adjourned at 9:50 p.m. Arlene R. Barera, Clerk



ROCK IN THE NIGHT AWAY were members of Chelsea High school's chapter of the National Honor Society, and some of their friends, as the students raised money for scholarships for the seniors. Students solicited pledges of money for every hour they rocked, and many of the students

planned to rock all night. The event went from noon Friday to noon Saturday. The conditions weren't too spartan, however, as the students had plenty of munchies, video movies to watch, and music to appreciate.

The EPA will soon conduct a nation-wide survey of homes for radon—a dangerous gas emitted from uranium deposits in the earth that seeps up into homes. National Wildlife magazine reports that up to a million homes may have "significant" levels of radon gas, which is known to cause cancer among uranium miners. Extremely high concentrations have already been found in southeastern Pennsylvania, New Jersey and New York.

Agriculture, Natural Resources Week Slated

Michigan's abundant natural resources, their maintenance and their enhancement will be highlighted during Agriculture and Natural Resource (ANR) Week, March 17-23 at Michigan State University. Michigan State University Co-operative Extension Service Programs are open to all regardless of race, color, creed, sex, handicap or national origin.

Many of the more than 200 workshops, educational meetings and exhibits will feature Michigan's natural resources. Topics will include tourism development, environmental management and recreation.

Gaylord Nelson, counselor for The Wilderness Society and former governor and U.S. senator from Wisconsin, will speak to the Natural Resources Reception and Banquet on March 19 about the compatibility of a clean environment and a prosperous economy.

Computer games, which test

your environmental skills and knowledge, and open discussions with people who make planning decisions for Michigan's parks and natural resources will be available.

Several organizations will hold annual meetings during ANR Week, such as the Michigan Committee on Wildflowers and the Michigan Association of Private Campground Owners, which will be holding its spring trade show and convention. These meetings often provide information that is interesting to everyone, and the public is encouraged to attend.

Contact the county MSU Co-operative Extension Service office for more details regarding ANR Week.

Please Notify Us
In Advance of
Any Change in Address

UNADILLA STORE AND DELI

Sun-Thurs
Open 10:00-10:00

Fri & Sat
Open 10:00-11:00

SINCE 1873

OLDEST STORE IN LIVINGSTON COUNTY
IN THE HEART OF DOWNTOWN UNADILLA

OPEN ALL YEAR - 7 DAYS 498-2400

WE HAVE GROCERIES - BEER - WINE - LIQUOR - ICE CREAM -
WOOD - FISHING NEEDS - GAS - OIL - A LITTLE OF EVERYTHING

DELI IS OPEN
RENIE'S BACK - HOME-MADE PIZZAS
ALWAYS-BIG SUBS, BREAD STICKS, PIZZA SLICES
SMALL STUFFED PIZZAS

DELI HOURS ARE FRI. & SAT. FROM 5 P.M. TILL CLOSING
REGULAR CHOCOLATE, SALAD & VEGETARIAN PIZZAS

OUR ICE CREAM PARLOR IS OPEN
REAL ICE CREAM - NEW HOME-MADE WAFFLE CONES
HOT FUDGE SUNDAES (you can eat dish and all)
16 FLAVORS OF ICE CREAM
& PENNY CANDY
BETTY LITTLE, Owner

OLD ORCHARD FURNITURE REFINISHING

Stripping - Refinishing
Repairs - Antique Restoration

Experienced - Professional

Pick-up & Delivery available

Ph. (517) 851-8713

513 Old Orchard Ln.

Stockbridge

K. of C. FISH FRY FRIDAYS

Serving from 5 to 8 p.m.

Feb. 14, 21, 28

March 7, 14, 21

ST. MARY'S SCHOOL HALL

400 Congdon St.

Chelsea

DEEP FRIED FISH

French Fries, Slaw, Roll & Butter

ADULTS: \$4.00

CHILDREN: (under 12) \$2.50

As you can eat
(This order only)

BAKED FISH

Vegetables, Slaw, Roll & Butter

Adult Dinners Only

\$4.50

Citizens Trust invites you to

Lunch & Learn

Speaker:

James J. Duderstadt

Dean, College of Engineering
University of Michigan

"Ann Arbor: High Tech Mecca
for the Midwest???"

Tuesday, March 18, 1986

12 Noon

Campus Inn
(Huron and State)

Tickets—\$6.00
(Lunch Included)

Reservations Required
call 994-5555, Ext. 213



CitizensTrust



COMMUNITY CHOIR TO PERFORM: Tuesday, March 11, at 8 p.m. in the high school auditorium, the Chelsea Community Choir will present its Spring Concert. Several numbers from Broadway musicals will be performed as well as spirituals and popular ballads. The concert will end with a mini-musical entitled, "America... The Dream." Featured on this year's concert will be the Ann Arbor Community Chorus, Ruth Kenny, director. They will sing two numbers during the program. Twenty-nine local musicians will perform with the Chelsea choir: Grace Bacheler, Elaine Bush, Carole Galloway, Norma

Graffand, Carol Strahler, Dorothy Brooks, Elizabeth J. Herrat, Shirley Hodges, Martha Kirk, Jean Clark, Carol Morris, Georgette Hansen, Ruth Smith, Sue Teare, Betty Dyer, Marlene Langley, Bev Slater, Diana Henderson, Jack Lottis, Wally Smith, Fred Depp, Don Kvarnberg, John Morris, Don Paulsell, Blake Thomson, Norman Weber, Betty Rasmussen and Dale Cole. A reception with coffee and cookies will be given by the Community Education Program which sponsors the Community Choir.



JACK D. BITTLE
Jack Bittle in
Third Year As
Choir Director

Jack D. Bittle is in his third year as director of the Chelsea Community Choir. He received his musical training at the University of Michigan where he played in the marching and symphony bands.

Bittle began his musical career as director of bands and choir at Cassopolis High school. After two years, he became director of bands at Sturgis High school and remained there for 11 years. During that 11 years, his bands consistently scored first divisions in all district and state festivals. In 1969, he became principal of Sturgis High school and remained so until January of 1981.

He moved to Chelsea when he became the executive director of the Michigan Association of Secondary School Principals. He is active in the First United Methodist church where he sings in the choir and conducts the high school choir.

Low Commodity Prices Fall Lower

It's a good thing February only had 28 days or farmers would have lost even more money last month. Farm prices fell 2.4%, following a 3.1% drop in January. Prices were 10% below a year ago. Most of the decline from January was caused by lower prices for tomatoes, cattle, lettuce, wheat, eggs, chickens, hogs, oranges and corn. Farmer costs were down less than 1% from February, 1985.

Arrested After Fight on South St.

A Napoleon man was arrested March 7 after Chelsea police broke up a fight involving him and three other men.

Dennis Dale Buck, 23, of 8753 Cady Rd., Napoleon, was taken into custody for violation of probation and civil bench warrant that had been issued. Officer Frank Kornel was called to the front of a residence at 226 South

St. to break up a fight involving three other men, none of whom was a Chelsea resident. Police did not give a reason for the disagreement.

A routine background check of Buck turned up the violation and warrant. He was turned over to Jackson county police.

Subscribe today to The Standard

**We Are Two;
Guess Who?**

MARCH 11, 1946

**HAPPY
BIRTHDAY**
from
**Mom and Dad
and Family**

**Now you can tan
without the sun.**

Ricardo's

HAIR & TANNING SALON

MAIN ST. • CHELSEA • 48131

**Housing Bureau
For Seniors, Inc.**

**HOUSING CHOICES
FOR SENIORS**

**Slide Show and Discussions
for Senior Citizens**

THURSDAY, MARCH 20
1 to 3 p.m.

CHELSEA SENIOR CITIZENS CENTER
699 McKinley St., Chelsea

FREE — To Register
CALL 763-0970 or 763-6642

Halley's Comet 1910 Visit Remembered

"It looked like a big, orangish circle, and it had rings, the way the moon does on a clear night. And, I remember, it had a long red tail."

That's the way Alice Atkinson recalls the time she saw Halley's comet as a four-year-old girl in 1910 while living on Dexter-Chelsea Rd.

"I remember, I heard a commotion out of doors," Alice recalled. "I was in bed. But I got up, looked out the door, and saw a lot of grown-ups outside looking at the sky. I decided to go outside, but someone said, 'one of your children is out of bed.'"

"My father said, 'that's all right,' and he picked me up, held me in his arms and took me to the west side of the house. I remember he held me close because it was chilly outside. I don't remember all the people who were there, but they were some of our neighbors. What I remember most was that big, long red tail, and having my father hold me in his arms."

Alice, who at that time was Alice Schantz, daughter of Mr. and Mrs. Conrad Schantz, says she hopes to see the comet again this year, but might have some prob-

lems with the trees at her Glazier Rd. home.

Any other Chelsea senior citizens who have memories of seeing Halley's comet are urged to call The Chelsea Standard office at 475-1371.

The first women's labor organization was one of maid servants in New York City in 1734, according to "Labor Firsts in America," a publication of the U.S. Department of Labor.

North Lake Co-Op Pre-school — Presents "Sunshine Saturdays"

March 22—"Hop in to Easter"
April 12—"Dancing Bears"
May 3—"May Flowers"

9:30 a.m. - 10:30 a.m.

**Open House
for 2-4 year olds
pre-schoolers
and their
parents**

**Art Projects
Stories - Music
Games
and
More**

Free!

**Reservations
Required**
Call
Jan Roberts - 475-3615
Sherry McKenzie - 475-8534

Fun!

Free!

**Located in the Village of Chelsea
across from the Fairgrounds**

North Lake Co-Op Pre-school admits students of any race color and national or ethnic origin.

**Women's
Night Out,
for the
Health
of It**

**Women's
Health
Services**

Join us for a special dinner presentation:
**"OSTEOPOROSIS:
THE INVISIBLE CRIPPLER"**

Guest speakers:
Jody Alexander, M.D.—Gynecologist & Obstetrician
Diana Rothman, M.D.—Orthopedic Surgeon

Tuesday, March 25th
The Marriott Inn, 3600 Plymouth Road
Ann Arbor, Michigan
6:30 PM Social Hour & Cash Bar
7:15 PM Dinner & Presentation

Dinner & Presentation: \$17
Reservations must be received no later than Thursday, March 20th.

To reserve a table of eight, please include all names and full payment in one envelope.

Please send checks payable to:
Saline Community Hospital, Women's Health Services
400 West Russell Street, Saline, Michigan 48176
For more information, call Julie at 429-1500.

Cornish Game Hen with Wild Rice Blend
Soup du Jour • Garden Salad
Green Beans Almondine • Apple Crisp

LITTLE WANT ADS! BIG PLUSES FOR BIG RESULTS!

Washtenaw County's Busy Marketplace . . . Quick, Economical Results . . . Give 'em a try!

Wanted to Rent 10a

WANTED APT. OR HOUSE in Chelsea area 2 bedroom. With references. Call Tom or Brenda 475-9746 45 10
WANT TO RENT By working couple 1-3 bedroom house in Grass Lake Chelsea area. Beginning in April (517) 782-0746, leave message 42 2
PROFESSIONAL COUPLE seeking quiet starter home to rent or rent with option to buy. We prefer 2 bedrooms and need storage space. Enjoy country atmosphere. Ph. 428-8609 days, 429-1749 evenings 42 2

For Rent 11

ROOM FOR RENT in Dexter to a female, non-smoker, no pets. Ph. 428-8637 42 2
3 BEDROOM HOUSE 2 story in Stockbridge village \$295 Chuck Walters Realtor 475-2882 44 1
1 BEDROOM APT in Dexter for rent to single male. References and security deposit required. Call 517-851-8422 44 1
2 BEDROOM APARTMENT in two family house Stockbridge Village \$320 Chuck Walters Realtor 475-2882 44 1
1 & 2 BEDROOM apartments at The Schoolhouse Square Apartments, 661 E. Michigan, Grass Lake. Includes stove, refrigerator, dishwasher, air conditioner, carpeted throughout, laundry. Call 517-522-4873, Dick Clark 41 2
EXTRA NICE quiet 3 room upper. Mature lady. Garage 475-7638 42 3
FOR LEASING and management of single family homes, duplexes and small multiple units. Call Bob Smith 475-6100 Charles Reinhart Co. 42 4
RENTAL Crooked Lake married couple preferred. References required. Ph. 475-2018 41 4
CAR RENTAL by the day, week and month. Full insurance coverage, low rates. Call Lyle Chiswell at Palmer Motor Sales 475-1301 38 4
FOR RENT Fair Service Center for meetings, parties, wedding receptions, etc. Weekdays or week ends. Contact Mark Stephens phone 426-3529 42 4
FURNISHED Island Lake home 3 bedrooms, all appliances \$350 per month. Ph. 475-1856 44 0
HOUSE Year round 3 bedrooms 2 baths, major appliances, carpeted, drapes, 2 car garage. Lake front \$675. References call 426-3737 44 2

Misc. Notices 12

BEEF DINNER
at
COVENANT CHURCH
Corner of Old US 12 and Freer Rd.
Chelsea
FRIDAY, MARCH 14
Serving at 5 p.m. 6 p.m. 7 p.m.
Adults \$5
Children under 12 yrs. \$2.50
Phone for tickets
475-1535
CROSS WITH CHRIST June 20 Germany, Austria, Switzerland July 5 Denmark, Ireland, Scotland July 21 Sweden, Norway August 4 France, Switzerland. Price from \$1,669. Dinner includes flight, 2 meals daily, 1st class hotels (517) 453-2202, 7369 Berna Rd., Pigeon, MI. 48755 41 8

BEER

DINNER

COVENANT CHURCH

FRIDAY, MARCH 14

Serving at 5 p.m. 6 p.m. 7 p.m.

Adults \$5

Children under 12 yrs. \$2.50

Phone for tickets

475-1535

CROSS WITH CHRIST

June 20 Germany, Austria, Switzerland

July 5 Denmark, Ireland, Scotland

July 21 Sweden, Norway

August 4 France, Switzerland

Price from \$1,669

Dinner includes flight, 2 meals daily, 1st class hotels

(517) 453-2202, 7369 Berna Rd., Pigeon, MI.

48755 41 8

Give A

Gift Subscription to

The Chelsea Standard!

ASAPH

Lumber Co.

14 Species Kiln

DRIED DOMESTIC

HARDWOOD

ROUGH MILLWORK

(517) 547-6671

Rollin, Mich. 49278, P.O. 112

McKERNAN REALTY, INC.

20179 McKernan Road

Chelsea, Michigan 48118

(313) 475-8424

MARK McKERNAN

Associate Broker

REALTOR

OPEN HOUSE

SUN., 1-5

350 GRANT: Want to be in the city limits? Unusually large bedrooms will melt your heart. You finally found a modern 3 bedroom ranch with bedrooms big enough for your furniture. Call to go inside. \$71,900.

129 CLARDALE CT.: This area up by the high school is in a prime location. 3 bedrooms plus a 4th in the finished basement. Larger than it looks from the street. Don't cheat your family by assuming it's too small. Immediate occupancy. Now \$65,900.

24-Hr. Answering Service

475-8348

PRICE REDUCTIONS

DUPLICES ON PARK & EAST STREETS: No, they are not sold. Aren't you tired of paying Uncle Sam thousands every year in income tax time? When your accountant says tax shelter he's talking about buying income property. Make an appointment. Now \$49,900 and \$54,900.

9700 BEEMAN RD.: Your kids want a horse? Dad wants wide open spaces. Mom dreams about a country kitchen, and insists that the next house will include a 1/2 bath off the master bedroom. Now \$55,900.

ROBERTS REALTY

LIST WITH US NOW!

1280 LIEBECK RD.: The house everyone can use, 1,200 sq. ft. on a full finished basement with 2 car garage. Includes fireplace, 2 full baths and immediate occupancy. Call today.

VACANT LAND: Yes, we have building sites of all sizes, prices and terms. We're ready to put our hiking clothes on and show you. (Some with as little as \$2,000 down.) Call and ask for Greg.

SHARON ROBERTS

OWNER/BROKER

GREGORY JOHNSON

SALES ASSOCIATE

(313) 481-1636

Bus Services 14

General

PROFESSIONAL FORESTRY

Management and marketing services for timber and firewood. Forest management plans. Urban forestry services. Christmas tree management. Tree planting. BPA Forestry Consultants. Brian McKenzie. Forester 475-2486 (517) 784-3847 42 4

Waterloo Glass Co.

Mobile Glass Repair

Auto Residential Commercial

Licensed Insured

475-7773

ADULT FOSTER CARE HOME

has openings for males and females with private rooms

(517) 851-9543

INCOME TAX PREPARATION

and

Monthly Bookkeeping SERVICE

Since 1953

By Appointment

CHESEA ACCOUNTING & TAX SERVICE

Now in Ann Arbor

769-0931

We Offer

Sales & Service

RCA Zenith Philco Quasar-Sony

& W and Color TVs

Multitone Chameleon Master Wanger Cobra CB Radios

Master Antenna Specialists

Antenna Motor Insurance Job

Commercial Residential

Paging Intercom Systems

NuTone Parts and Service Center

Hoover Vacuum Dealers

and Service Specialists

Keys by Curtis

We service other leading brands

Senior Citizens 10% Discount

LOY'S TV CENTER

512 N. Maple Rd. Ann Arbor

769-0136

Master Charge Visa Welcome

PIANO TUNING and repair. Quality

fixed technicians. Call Ron Harris

475-7134

Carpentry Construction

DAVE'S SIDING & ROOFING

Aluminum and vinyl siding. Custom

trim and gutters. (517) 851-7740

8411

R. L. BAUER

Builders

LICENSED and INSURED

Custom Building

Houses - Garages - Pole Barns

Roofing - Siding - Concrete Work

FREE ESTIMATES

Call 475-1218

RON MONTAGNE

CONSTRUCTION

Full carpentry services

(rough and finish)

Additions, remodeling and repairs

Replacement Windows

Concrete

Roofing and siding

Cabinets and Formica work

Excavating and Trenching

QUALITY WORKMANSHIP

FREE ESTIMATES

475-1080

LICENSED

1911

Bus. Opportunity 16

John Kerr, Builder

LICENSED & INSURED

Roofs, Decks, Additions

Wood Fencing

Finished Carpentry

Phone 426-2174

ROOFING SIDING remodeling

Kitchens Jim Hughes 475-2079 or

475-2582

Excavating

SAND GRAVEL

KLINK

EXCAVATING

Builder Backhoe

Trucking Crane Work

Top Soil Demolition

Drainfield Septic Tank

Trenching 5 up

Industrial Residential Commercial

CALL 475-7631

LITTLE WACK EXCAVATING

Licensed & Insured. Basements

Drainfields Digging. Bulldozing

Trenching. Black Dirt. Sand. Gravel.

Paul Wackenhut 313-528-9025 2311

Repairs Improvements

FOSTER'S

SMALL ENGINE REPAIR

845 Tech. Kohler parts stocked

Repair all makes lawnmowers, chain

saws, rototillers, snow throwers.

Blades sharpened. Reasonable rates.

Ph. 475-7623

COMPLETE SMALL ENGINE SERVICE

Lawn mowers tillers garden

tractors, chain saws and snow

blowers. Chains sharpened. Chelsea

Hardware Garden in Saw Shop

475-1121

Window Screens

Repaired

Reasonable rates

Chelsea Hardware

1105 Main Ph. 475-1121

3011

Bus. Opportunity 16

OWN YOUR OWN Jean Sportswear

Ladies Apparel children's large

size petite combination store

waterproof snowwear accessories

Jordache, Chv. Lee, Levi, Road

Grand, Tommy, Calvin Klein, Sergio

Valentino, Evan Picone, Liz Claiborne.

Members Only, Gasoline, Healthies.

Over 1000 others. \$13,300 to \$24,900

includes training, fixtures, grand

opening etc. Can open 15 days. Mr.

Keenan 303-675-3639

Card of Thanks 17

THANK YOU:

The family of Ernest Schafer

express their heartfelt thanks to

friends and relatives for their

acts of kindness during our re-

cent sorrow. We also extend ex-

traordinary gratitude to Pastor John

Morris for all his assistance dur-

ing our bereavement.

The Ernest Schafer family,

and Donna and Duane Schiller.

CARD OF THANKS

I would like to thank my family

and friends for cards and flowers

sent to me, also their prayers,

while I was in St. Joseph Mercy

Hospital. A special thanks to Fr.

Dupuis and Eric and Mary

Hansen.

Mary A. Clark.

CARD OF THANKS

A special thank you to my family

and all my friends and neighbors

for all the beautiful cards and

flowers, sent to me at St. Joseph

Mercy Hospital and at my home.

Special thanks to Annicare, to my

registered nurses, Gladys Buck

and Key Poljan, and my two

Card of Thanks 17

CARD OF THANKS

We want to thank all of our

special relatives, friends, and

neighbors who were so thoughtful

in so many ways, following the

death of our husband and father,

Raymond Koch. We can't say

enough for your thoughtfulness

and support. A special thank you

to Dave Baker and Richard Cesar

and John and Gloria Mitchell.

Our sincere thanks to everyone.

Blanche Koch.

Larry Koch and Family.

CARD OF THANKS

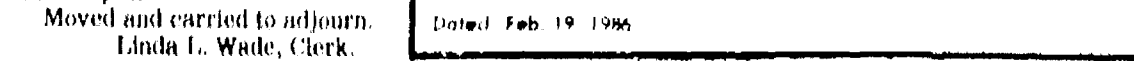
To place your ad in
THE CHELSEA STANDARD

Feb. 9, 1986

Legal Notice 19

Jerry Straub, 475-7648

475-7648



George P. Couch, Co-Secretary

Dated Feb 19 1944



John Mann Loan Officer At NBD

National Bank of Detroit has announced the appointment of John K. Mann of Chelsea as loan officer at NBD Ann Arbor.

Mann joined NBD in 1983 as a credit analyst in the Credit Administration Division. He was subsequently elected assistant loan officer at NBD Ann Arbor.

He received a B.A. degree from Albion College in 1977 and an M.B.A. degree from Duke University in 1983.

Severe Weather Seminar Slated

The Eighth Annual Sky Warn Weather Seminar is offering free admission to Dexter, Chelsea and Macomb area residents this month.

Western Washtenaw county citizens are invited to attend a National Weather Meeting to be held Tuesday, March 25, at the UAW Local 1284 Hall, located at 2785 South M-42, Chelsea.

The meeting will begin promptly at 7 p.m. and will feature Dan Harsh, director of the Washtenaw County Office of Emergency Management, and Robert Snider, meteorologist with the National Weather Service.

Harsh will show a film and slides, and discuss severe weather conditions, including tornadoes and weather forecasting.

"Please plan to attend this educational meeting and familiarize yourself with the signs, warnings, precautions and emergency procedures necessary in the event of severe weather," urge local, county and national officials.

Last year, 56 people died in the wake of tornadoes occurring in the United States.

The Chelsea Communications Club and UAW Local 1284 consider it a privilege to host the

meeting and to have Dan Harsh and Robert Snider give the informative presentations. Both organizations urge citizen participation.

Any questions may be addressed to Robert Schantz, director of the Chelsea Communications Club, or to John M. Harook, financial secretary for UAW Local 1284.

Think Positive— The Bottom Is at Hand

John Marten, economist for Farm Journal magazine, said that December, 1985, was the turning point toward farm prosperity. His analysis in the mid-January 1986 issue said "it has been 10 years since inflation, interest rates, the dollar, the deficit, energy prices, production costs and farm policy have all been positive. So expect increasing exports, lower deficits, stabilized farm prices, lower costs, higher incomes and (in 1986) the bottom of the land market. Think positive—the bottom is at hand."

Farmers hope he's right!



OUTSTANDING COMEDY is being presented at True Grist Theatre in Homer with their production of "The Owl and the Pussycat." Bobb James and Sharon Horach keep their patrons in

True Grist Presents Gem in 'The Owl and the Pussycat'

By Russ Ogden
Free Lance Drama Critic
and Professor at EMU

Two brilliant professionals on the True Grist Theatre's dinner stage in the form of Bobb James and Sharon Horach illuminated bundles of humor and warmth in their rendition of "The Owl and the Pussycat" on Saturday evening to an appreciative full house of patrons.

However, playwright Bill Manoff and his play are really the unseen stars and line after line of touching, vicious, understated humor abound from the actor's tips. Manoff's script is adroitly planned not just with witty lines, but meaningfully honed ones for shared "belly laughter" during the entire evening performance.

sitivity again in this True Grist gem of a production.

A sad note about the very fine comedic evening was somewhat overshadowed by the slipping of the quality of food and the service which was strictly third class at this production. The fact that it was almost a full house should not have interfered with the usual positive amiability of the supporting staff. It is hoped that this was a one night slip and that food and service will be promptly returned to its usual high level.

The not-to-be-missed comedy of "The Owl and the Pussycat"

runs for two more weeks at the smaller dinner theatre with matinees on Wednesday and Sunday, evening performances on Thursday, Friday and Saturday.

To run concurrently with "The Owl and the Pussycat," the main stage at the True Grist opens with a musical production "Godspell" on March 13, Thursday evening. And for the real theatre addict, "Chorus Line" looms just over the spring horizon.

Information about tickets may be had by calling True Grist Dinner Theatre at 1-517-568-4151.

Two School Board Positions Available

Nominating petitions are due at 4 p.m. on Monday, April 7 for two Chelsea School Board positions that will be up for grabs in the June 9 school elections.

The two four-year positions are currently held by board president Dale Schumann, and Ann Feeney.

Both Schumann and Feeney told The Chelsea Standard that they will not seek re-election. Schumann has served on the board for the past eight years, while Feeney has served for 10 years, including two years as president.

"The only thing that might make me change my mind is if nobody else picked up a petition," Feeney said. "I'm leaving because I think the board can use a new person with new ideas. I told Ray (Van Meer, superintendent) that I wouldn't leave the board in a bind if no one else decided to run."

Each board position pays \$5 per meeting. Each nominating petition requires the signatures of 20 registered voters within the school district. Candidates must also live within the district, and must be at least 18 years old.

The Chelsea school district includes all of Sylvan township and parts of Lima, Lyndon, Dexter, Freedom, and Sharon townships in Washtenaw county, and parts of Waterloo and Grass Lake townships in Jackson county.

Petitions are available in the school district administrative office at Chelsea High school.

As of last Friday, no one had picked up a petition, according to assistant superintendent Fred Mills, who was recently ap-

pointed election administrator by the school board.

Anyone registered to vote in general elections in those townships is also registered to vote in school elections provided that person also lives within the district.

Deadline for new voter registrations is 5 p.m. Monday, May 12. Potential voters may sign up with their township clerks or as any secretary of state branch office. (There is one at 102 S. Main St. in Chelsea.)

Absentee ballots will be available on Tuesday, May 20 at the Chelsea High school office. The election will be held at Beach Middle school, from 7 a.m. to 8 p.m.

Congressman Pursell To Appear on BizNet

Congressman Carl D. Pursell, R-Mich., will appear on the American Business Network (BizNet) Friday, March 14.

Pursell will be a guest on the network's live "Ask Washington" program. The talk show is a public affairs program which regularly features guests from the public and private sector.

Persons living in the Second Congressional District can see the program which airs starting at 9 a.m., on Channel 31, WHTT-TV. The show is produced at network studios in the U.S. Chamber of Commerce Building in Washington, D.C.

Subscribe to
The Chelsea Standard!

NOTICE OF PUBLIC HEARING ON PROPOSED AMENDMENT TO CHELSEA VILLAGE ZONING ORDINANCE

Notice is hereby given that the Chelsea Village Council will conduct a public hearing as the statute in such case provides for the amendment of the Chelsea Village Zoning Ordinance (Ordinance No. 79) that is:

An Ordinance to amend Chelsea Village Zoning Ordinance and regulate the use, alteration, expansion, and substitution of nonconformities.

The aforesaid hearing will be held in the Council Room in the Chelsea Village Municipal Building on Tuesday, April 1, 1986 at 7:30 o'clock P.M. The proposed amendment is on file in the office of the Village Manager and may be examined prior to the date of the hearing.

**CHELSEA
VILLAGE COUNCIL**
Evelyn Rosenthorp, Clerk.



An estimated 80 million American homes have at least one TV.



Law Offices
DONALD H. KENNEY
general practice

Family law, business & corporate,
probate & wills, trials

3238 Broad Street
Dexter

426-4424

OFFICIAL NOTICE Regular Meeting of the DEXTER TOWNSHIP BOARD

Will Be Held
TUESDAY, MARCH 18, 1986-7:30 p.m.

at DEXTER TOWNSHIP HALL
6880 Dexter-Pinckney Rd., Dexter, Mich.

DISCUSSION ITEM:
Planned use of 1986 Federal Revenue Sharing money.

WILLIAM EISENBEISER
Dexter Township Clerk

NOTICE ANNUAL TOWNSHIP MEETING

NOTICE IS HEREBY GIVEN,
That the next Annual Township
Meeting of the Electors of the
TOWNSHIP of LIMA

County of Washtenaw, State of Michigan
will be held at
Lima Township Hall

11432 Jackson Road
Beginning at 1:00 o'clock p.m.

Saturday, March 29, 1986

AGENDA ITEMS
1. Budget Hearing for Federal Revenue Sharing
2. Proposed 1986-87 Budget

Signed: **ARLENE BAREIS**
Township Clerk.

NOTICE ANNUAL TOWNSHIP MEETING

NOTICE IS HEREBY GIVEN,
That the next Annual Township
Meeting of the Electors of the
TOWNSHIP of DEXTER

County of Washtenaw, State of Michigan
will be held at
Dexter Township Hall

6880 Dexter-Pinckney Rd.
Beginning at 7:30 p.m.

Monday, March 24, 1986

Federal Revenue Sharing Budget Hearing
at 7:30 p.m.

Township Budget Hearing for 1986-87
at 7:45 p.m.

A copy of the proposed budget will be available at the hearing

Annual Meeting 8:00 p.m.

Signed: **WILLIAM EISENBEISER**
Township Clerk.

Dated: March 8, 1986

FOR PROFIT

FEED

See us
for feed
needs!

**Feed Formulas Tested,
Proved To Get Results**

Extra proteins, vitamins and minerals in proper balance, scientifically blended, make our feeds real profit producers for you.

Farmers' Supply Co.
Phone 475-1777

**EAT, DRINK,
AND BE IRISH!**

**ST. PATRICK'S
DAY**

Monday, March 17th

Serving All Day and Night

**CORNER BEEF & CABBAGE
IRISH STEW
HOME-MADE SODA BREAD
GREEN BEER - IRISH COFFEE - IRISH MUSIC**

"SYNERGY" Live Band Friday & Saturday

WOLVERINE

Food & Spirits

W. Old US-12 & M-52
Chelsea

(313) 475-9014

Church Services

Assembly of God

FIRST ASSEMBLY OF GOD
The Rev. Phil Farnsworth, Pastor
Every Sunday—
9:45 a.m.—Sunday school
11:00 a.m.—Worship service and Sunday school
6:00 p.m.—Evening worship

GREGORY BAPTIST
The Rev. W. Thomas Cochran, Pastor
Every Sunday—
9:45 a.m.—Sunday school
11:00 a.m.—Morning worship
6:00 p.m.—Evening worship

FELLOWSHIP BAPTIST
The Rev. Larry Matz, Pastor
Every Sunday—
9:45 a.m.—Sunday school
11:00 a.m.—Morning worship
6:00 p.m.—Evening worship

ST. MARY
The Rev. Fr. David Philip Dupuis, Pastor
Every Sunday—
8:00 a.m.—Mass
10:30 a.m.—Mass
12:00 noon—Mass

CHRISTIAN SCIENTIST
The Rev. David Philip Dupuis, Pastor
Every Sunday—
10:30 a.m.—Sunday school, morning service

CHURCH OF CHRIST
Every Sunday—
9:45 a.m.—Bible classes, all ages
10:30 a.m.—Worship service, Nursery available
6:00 p.m.—Worship service, Nursery available

ST. BARNABAS
The Rev. Fr. Joseph P. Beaumont, O.S.P.
Every Sunday—
8:00 a.m.—Mass
10:30 a.m.—Mass
12:00 noon—Mass

ST. JOHN'S
The Rev. Theodore Wenzler, Pastor
Every Sunday—
9:45 a.m.—Sunday school
11:00 a.m.—Morning worship
6:00 p.m.—Evening worship

ST. JOHN'S EVANGELICAL
The Rev. Paul McKenna, Pastor
Every Sunday—
9:45 a.m.—Sunday school
11:00 a.m.—Morning worship
6:00 p.m.—Evening worship

ST. PAUL
The Rev. Erwin R. Koch, Pastor
Every Sunday—
9:45 a.m.—Sunday school
11:00 a.m.—Morning worship
6:00 p.m.—Evening worship

ST. JOHN'S
The Rev. Theodore Wenzler, Pastor
Every Sunday—
9:45 a.m.—Sunday school
11:00 a.m.—Morning worship
6:00 p.m.—Evening worship

ST. JOHN'S
The Rev. Theodore Wenzler, Pastor
Every Sunday—
9:45 a.m.—Sunday school
11:00 a.m.—Morning worship
6:00 p.m.—Evening worship

ST. JOHN'S
The Rev. Theodore Wenzler, Pastor
Every Sunday—
9:45 a.m.—Sunday school
11:00 a.m.—Morning worship
6:00 p.m.—Evening worship

ST. JOHN'S
The Rev. Theodore Wenzler, Pastor
Every Sunday—
9:45 a.m.—Sunday school
11:00 a.m.—Morning worship
6:00 p.m.—Evening worship

ST. JOHN'S
The Rev. Theodore Wenzler, Pastor
Every Sunday—
9:45 a.m.—Sunday school
11:00 a.m.—Morning worship
6:00 p.m.—Evening worship

ST. JOHN'S
The Rev. Theodore Wenzler, Pastor
Every Sunday—
9:45 a.m.—Sunday school
11:00 a.m.—Morning worship
6:00 p.m.—Evening worship

ST. JOHN'S
The Rev. Theodore Wenzler, Pastor
Every Sunday—
9:45 a.m.—Sunday school
11:00 a.m.—Morning worship
6:00 p.m.—Evening worship

ST. JOHN'S
The Rev. Theodore Wenzler, Pastor
Every Sunday—
9:45 a.m.—Sunday school
11:00 a.m.—Morning worship
6:00 p.m.—Evening worship

ST. JOHN'S
The Rev. Theodore Wenzler, Pastor
Every Sunday—
9:45 a.m.—Sunday school
11:00 a.m.—Morning worship
6:00 p.m.—Evening worship

ST. JOHN'S
The Rev. Theodore Wenzler, Pastor
Every Sunday—
9:45 a.m.—Sunday school
11:00 a.m.—Morning worship
6:00 p.m.—Evening worship

ST. JOHN'S
The Rev. Theodore Wenzler, Pastor
Every Sunday—
9:45 a.m.—Sunday school
11:00 a.m.—Morning worship
6:00 p.m.—Evening worship

ST. JOHN'S
The Rev. Theodore Wenzler, Pastor
Every Sunday—
9:45 a.m.—Sunday school
11:00 a.m.—Morning worship
6:00 p.m.—Evening worship

ST. THOMAS LUTHERAN
The Rev. John Rake, Pastor
Every Sunday—
9:45 a.m.—Sunday school
11:00 a.m.—Morning worship
6:00 p.m.—Evening worship

ST. THOMAS LUTHERAN
The Rev. John Rake, Pastor
Every Sunday—
9:45 a.m.—Sunday school
11:00 a.m.—Morning worship
6:00 p.m.—Evening worship

ST. THOMAS LUTHERAN
The Rev. John Rake, Pastor
Every Sunday—
9:45 a.m.—Sunday school
11:00 a.m.—Morning worship
6:00 p.m.—Evening worship

ST. THOMAS LUTHERAN
The Rev. John Rake, Pastor
Every Sunday—
9:45 a.m.—Sunday school
11:00 a.m.—Morning worship
6:00 p.m.—Evening worship

ST. THOMAS LUTHERAN
The Rev. John Rake, Pastor
Every Sunday—
9:45 a.m.—Sunday school
11:00 a.m.—Morning worship
6:00 p.m.—Evening worship

ST. THOMAS LUTHERAN
The Rev. John Rake, Pastor
Every Sunday—
9:45 a.m.—Sunday school
11:00 a.m.—Morning worship
6:00 p.m.—Evening worship

ST. THOMAS LUTHERAN
The Rev. John Rake, Pastor
Every Sunday—
9:45 a.m.—Sunday school
11:00 a.m.—Morning worship
6:00 p.m.—Evening worship

ST. THOMAS LUTHERAN
The Rev. John Rake, Pastor
Every Sunday—
9:45 a.m.—Sunday school
11:00 a.m.—Morning worship
6:00 p.m.—Evening worship

ST. THOMAS LUTHERAN
The Rev. John Rake, Pastor
Every Sunday—
9:45 a.m.—Sunday school
11:00 a.m.—Morning worship
6:00 p.m.—Evening worship

ST. THOMAS LUTHERAN
The Rev. John Rake, Pastor
Every Sunday—
9:45 a.m.—Sunday school
11:00 a.m.—Morning worship
6:00 p.m.—Evening worship

ST. THOMAS LUTHERAN
The Rev. John Rake, Pastor
Every Sunday—
9:45 a.m.—Sunday school
11:00 a.m.—Morning worship
6:00 p.m.—Evening worship

ST. THOMAS LUTHERAN
The Rev. John Rake, Pastor
Every Sunday—
9:45 a.m.—Sunday school
11:00 a.m.—Morning worship
6:00 p.m.—Evening worship

ST. THOMAS LUTHERAN
The Rev. John Rake, Pastor
Every Sunday—
9:45 a.m.—Sunday school
11:00 a.m.—Morning worship
6:00 p.m.—Evening worship

ST. THOMAS LUTHERAN
The Rev. John Rake, Pastor
Every Sunday—
9:45 a.m.—Sunday school
11:00 a.m.—Morning worship
6:00 p.m.—Evening worship

ST. THOMAS LUTHERAN
The Rev. John Rake, Pastor
Every Sunday—
9:45 a.m.—Sunday school
11:00 a.m.—Morning worship
6:00 p.m.—Evening worship

ST. THOMAS LUTHERAN
The Rev. John Rake, Pastor
Every Sunday—
9:45 a.m.—Sunday school
11:00 a.m.—Morning worship
6:00 p.m.—Evening worship

ST. THOMAS LUTHERAN
The Rev. John Rake, Pastor
Every Sunday—
9:45 a.m.—Sunday school
11:00 a.m.—Morning worship
6:00 p.m.—Evening worship

ST. THOMAS LUTHERAN
The Rev. John Rake, Pastor
Every Sunday—
9:45 a.m.—Sunday school
11:00 a.m.—Morning worship
6:00 p.m.—Evening worship

ST. THOMAS LUTHERAN
The Rev. John Rake, Pastor
Every Sunday—
9:45 a.m.—Sunday school
11:00 a.m.—Morning worship
6:00 p.m.—Evening worship

ST. THOMAS LUTHERAN
The Rev. John Rake, Pastor
Every Sunday—
9:45 a.m.—Sunday school
11:00 a.m.—Morning worship
6:00 p.m.—Evening worship

ST. THOMAS LUTHERAN
The Rev. John Rake, Pastor
Every Sunday—
9:45 a.m.—Sunday school
11:00 a.m.—Morning worship
6:00 p.m.—Evening worship

ST. THOMAS LUTHERAN
The Rev. John Rake, Pastor
Every Sunday—
9:45 a.m.—Sunday school
11:00 a.m.—Morning worship
6:00 p.m.—Evening worship

ST. THOMAS LUTHERAN
The Rev. John Rake, Pastor
Every Sunday—
9:45 a.m.—Sunday school
11:00 a.m.—Morning worship
6:00 p.m.—Evening worship

METHODIST
CHELSEA FREE METHODIST
The Rev. John Rake, Pastor
Every Sunday—
9:45 a.m.—Sunday school
11:00 a.m.—Morning worship
6:00 p.m.—Evening worship

METHODIST
CHELSEA FREE METHODIST
The Rev. John Rake, Pastor
Every Sunday—
9:45 a.m.—Sunday school
11:00 a.m.—Morning worship
6:00 p.m.—Evening worship

METHODIST
CHELSEA FREE METHODIST
The Rev. John Rake, Pastor
Every Sunday—
9:45 a.m.—Sunday school
11:00 a.m.—Morning worship
6:00 p.m.—Evening worship

METHODIST
CHELSEA FREE METHODIST
The Rev. John Rake, Pastor
Every Sunday—
9:45 a.m.—Sunday school
11:00 a.m.—Morning worship
6:00 p.m.—Evening worship

METHODIST
CHELSEA FREE METHODIST
The Rev. John Rake, Pastor
Every Sunday—
9:45 a.m.—Sunday school
11:00 a.m.—Morning worship
6:00 p.m.—Evening worship

METHODIST
CHELSEA FREE METHODIST
The Rev. John Rake, Pastor
Every Sunday—
9:45 a.m.—Sunday school
11:00 a.m.—Morning worship
6:00 p.m.—Evening worship

METHODIST
CHELSEA FREE METHODIST
The Rev. John Rake, Pastor
Every Sunday—
9:45 a.m.—Sunday school
11:00 a.m.—Morning worship
6:00 p.m.—Evening worship

METHODIST
CHELSEA FREE METHODIST
The Rev. John Rake, Pastor
Every Sunday—
9:45 a.m.—Sunday school
11:00 a.m.—Morning worship
6:00 p.m.—Evening worship

METHODIST
CHELSEA FREE METHODIST
The Rev. John Rake, Pastor
Every Sunday—
9:45 a.m.—Sunday school
11:00 a.m.—Morning worship
6:00 p.m.—Evening worship

METHODIST
CHELSEA FREE METHODIST
The Rev. John Rake, Pastor
Every Sunday—
9:45 a.m.—Sunday school
11:00 a.m.—Morning worship
6:00 p.m.—Evening worship

METHODIST
CHELSEA FREE METHODIST
The Rev. John Rake, Pastor
Every Sunday—
9:45 a.m.—Sunday school
11:00 a.m.—Morning worship
6:00 p.m.—Evening worship

METHODIST
CHELSEA FREE METHODIST
The Rev. John Rake, Pastor
Every Sunday—
9:45 a.m.—Sunday school
11:00 a.m.—Morning worship
6:00 p.m.—Evening worship

METHODIST
CHELSEA FREE METHODIST
The Rev. John Rake, Pastor
Every Sunday—
9:45 a.m.—Sunday school
11:00 a.m.—Morning worship
6:00 p.m.—Evening worship

METHODIST
CHELSEA FREE METHODIST
The Rev. John Rake, Pastor
Every Sunday—
9:45 a.m.—Sunday school
11:00 a.m.—Morning worship
6:00 p.m.—Evening worship

METHODIST
CHELSEA FREE METHODIST
The Rev. John Rake, Pastor
Every Sunday—
9:45 a.m.—Sunday school
11:00 a.m.—Morning worship
6:00 p.m.—Evening worship

METHODIST
CHELSEA FREE METHODIST
The Rev. John Rake, Pastor
Every Sunday—
9:45 a.m.—Sunday school
11:00 a.m.—Morning worship
6:00 p.m.—Evening worship

METHODIST
CHELSEA FREE METHODIST
The Rev. John Rake, Pastor
Every Sunday—
9:45 a.m.—Sunday school
11:00 a.m.—Morning worship
6:00 p.m.—Evening worship

METHODIST
CHELSEA FREE METHODIST
The Rev. John Rake, Pastor
Every Sunday—
9:45 a.m.—Sunday school
11:00 a.m.—Morning worship
6:00 p.m.—Evening worship

METHODIST
CHELSEA FREE METHODIST
The Rev. John Rake, Pastor
Every Sunday—
9:45 a.m.—Sunday school
11:00 a.m.—Morning worship
6:00 p.m.—Evening worship

METHODIST
CHELSEA FREE METHODIST
The Rev. John Rake, Pastor
Every Sunday—
9:45 a.m.—Sunday school
11:00 a.m.—Morning worship
6:00 p.m.—Evening worship

METHODIST
CHELSEA FREE METHODIST
The Rev. John Rake, Pastor
Every Sunday—
9:45 a.m.—Sunday school
11:00 a.m.—Morning worship
6:00 p.m.—Evening worship

METHODIST
CHELSEA FREE METHODIST
The Rev. John Rake, Pastor
Every Sunday—
9:45 a.m.—Sunday school
11:00 a.m.—Morning worship
6:00 p.m.—Evening worship

METHODIST
CHELSEA FREE METHODIST
The Rev. John Rake, Pastor
Every Sunday—
9:45 a.m.—Sunday school
11:00 a.m.—Morning worship
6:00 p.m.—Evening worship

Family Life Radio Coming to Chelsea Christian Fellowship

Steve Wright, manager of the Family Life radio station in Albion, will be ministering in music along with his wife, Cindy, on Sunday, March 16 in the morning service at Chelsea Christian Fellowship church. Steve Wright will also be ministering the morning message.

Family Life Radio is a Christian radio station which can be heard at 96.7 on the FM dial. The pastor and congregation of Chelsea Christian Fellowship invites those from the community to join them in their morning service. The service begins at 10:30 a.m.

Acting USDA Secretary Resigns Washington Post

John Norton, Deputy Secretary, U.S. Department of Agriculture, who was serving as acting secretary until the senate confirms Richard Lyng, resigned Feb. 15. Frank Naylor, under-secretary for small community and rural development, will now serve as the acting secretary until the senate takes action. Norton said he was returning to Arizona to farm. His resignation was effective immediately, he said.

Non-Denominational—CHELSEA CHRISTIAN FELLOWSHIP

Every Sunday—
9:45 a.m.—Sunday school
11:00 a.m.—Morning worship
6:00 p.m.—Evening worship

CHELSEA CHRISTIAN MEN'S FELLOWSHIP PRAYER BREAKFAST

Every Sunday—
9:45 a.m.—Sunday school
11:00 a.m.—Morning worship
6:00 p.m.—Evening worship

CHELSEA FULL GOSPEL

Every Sunday—
9:45 a.m.—Sunday school
11:00 a.m.—Morning worship
6:00 p.m.—Evening worship

CHELSEA HOSPITAL MINISTRY

Every Sunday—
9:45 a.m.—Sunday school
11:00 a.m.—Morning worship
6:00 p.m.—Evening worship

CONVIVANT

Every Sunday—
9:45 a.m.—Sunday school
11:00 a.m.—Morning worship
6:00 p.m.—Evening worship

DEMANUEL BIBLE

Every Sunday—
9:45 a.m.—Sunday school
11:00 a.m.—Morning worship
6:00 p.m.—Evening worship

MT HOPE BIBLE

Every Sunday—
9:45 a.m.—Sunday school
11:00 a.m.—Morning worship
6:00 p.m.—Evening worship

NORTH SHARON BIBLE

Every Sunday—
9:45 a.m.—Sunday school
11:00 a.m.—Morning worship
6:00 p.m.—Evening worship

SHARON UNITED METHODIST

Every Sunday—
9:45 a.m.—Sunday school
11:00 a.m.—Morning worship
6:00 p.m.—Evening worship

MORMON—CHURCH OF JESUS CHRIST OF LATTER-DAY SAINTS

Every Sunday—
9:45 a.m.—Sunday school
11:00 a.m.—Morning worship
6:00 p.m.—Evening worship

Presbyterian—FIRST UNITED PRESBYTERIAN

Every Sunday—
9:45 a.m.—Sunday school
11:00 a.m.—Morning worship
6:00 p.m.—Evening worship

ST. JOHN'S

Every Sunday—
9:45 a.m.—Sunday school
11:00 a.m.—Morning worship
6:00 p.m.—Evening worship

ST. JOHN'S

Every Sunday—
9:45 a.m.—Sunday school
11:00 a.m.—Morning worship
6:00 p.m.—Evening worship

ST. JOHN'S

Every Sunday—
9:45 a.m.—Sunday school
11:00 a.m.—Morning worship
6:00 p.m.—Evening worship

ST. JOHN'S

Every Sunday—
9:45 a.m.—Sunday school
11:00 a.m.—Morning worship
6:00 p.m.—Evening worship

ST. JOHN'S

Every Sunday—
9:45 a.m.—Sunday school
11:00 a.m.—Morning worship
6:00 p.m.—Evening worship

Every Sunday—
9:45 a.m.—Sunday school
11:00 a.m.—Morning worship
6:00 p.m.—Evening worship



JUMPING OFF TO A GOOD START in the campaign to stir up student interest for Jump Rope for Heart next Monday afternoon at Beach Middle School are, from left, Kim Roberts, Stacy Scott, Stacie Gaudin, Stephanie Wagner, Rebecca Burkett, Vicki Bullock and Sarah Green. Jump Rope for Heart is an event to raise money for the American Heart Association. Teams secure pledges for the number of minutes they jump. The occasion above was a rope jumping demonstration by students from St. Francis school in Ann Arbor last Tuesday. The St. Francis youngsters showed the Beach students what true skill in the sport looks like, as they demonstrated a number of routines. Ann Schaffner, co-ordinator of the event, said \$4,000 would be a reasonable goal for the school.



JUMPING ROPE TO THE THEME from "Tillamook Vics" are students from St. Francis school in Ann Arbor. The students gave a lively display of the athleticism of jumping rope in a series of dance routines at Beach school last Tuesday. The event was designed to arouse student interest in the Jump Rope for Heart event, which will take place Monday at the school. The event will raise money for the American Heart Association. Ann Schaffner, co-ordinator of the event, hopes 120-150 students will participate this year. Teams of students will jump from 3:30-4:30 p.m., with money pledged to them for each minute they jump.

'Occultism Exposed' Discussion Stated at Stockbridge Church

"Occultism Exposed" is the topic Melody Falkner will speak on Saturday, March 15 at 8 a.m., at Spirit and Life Fellowship church, 2927 Dexter Trail Rd. (4 miles west of M-52), Stockbridge. Pastors of churches and members of their congregation are urged to attend. Melody Falkner will have a display of toys and games to illustrate occultism in children's toys, games and rock music. Free literature will be available. There will be a question and answer period following the speech.

Subscribe to The Chelsea Standard!

Jump Rope for Heart Slated March 19 at Beach

Beach school students will again be participating in the Jump Rope for Heart event Tuesday, March 18. The event gives the students a chance to raise money for the American Heart Association and get a good aerobic workout at the same time. Participants secure pledges from sponsors for each minute their team jumps. Students work together in six-member teams. Last year the school raised \$2,701, which was used to benefit the research, educational and community programs of the American Heart Association. Students will also have the chance to receive individual prizes and/or a trophy depending on their pledge receipts. The event will also provide athletic equipment and educational materials for the school. Parents are welcome to attend the three-hour event, which runs from 3:30-6:30 p.m. Ann Schaffner is the event director.

Please Notify Us In Advance of Any Change in Address

I asked Jesus, "Lord, how much do you love me?"

Jesus replied: "This much." Then He spread His arms on the cross, and died for me.

Forget Me Not, A Rose For Mary

Mellie Warner

Hours 8 a.m. till dark, 7 days a week

FARM BAKED DOUGHNUTS AND BREAD

(517) 769-6772

14928 Bunker Hill Rd., Stockbridge

GEE FARMS

Bulk Seeds	Potting Soil	FRESH VEGETABLES
Houseplants	Michigan Apples	ALL LINE
Florida Citrus	Now is the time for dormant oil and fruit tree spray	

SEEDS

SUNFLOWER

BLACK OIL

50 lb. bag \$10.95

Potatoes

Michigan

50 lb. bag \$2.99

Open for the season Thursday, March 13th

Gee Farms Has Flipped Over Spring

Do you have PMS?

Recent research indicates that pre-menstrual syndrome may be the most common medical condition in the world. Forty percent of all women suffer from it occasionally, and ten percent of them have such a serious combination of symptoms that they require medical treatment.

What is PMS?

PMS is a hormone disorder that originates in the brain, not in the reproductive organs, so it can affect women of all ages. Symptoms include headaches, fatigue, depression, anxiety, eating binges, and mood swings, but the symptoms can be as diverse as women themselves. The common denominator and the key to diagnosis is the cyclical occurrence of the symptoms.

What is The Michigan PMS Program?

The Michigan PMS Program is part of the new Women's Health Center at Chelsea Community Hospital. At The Michigan PMS Program, you will never be told that there is nothing wrong with you or that your symptoms are your fault. Your symptoms will be carefully evaluated, and an individualized treatment program will be designed to relieve your specific condition.

Contact The Michigan PMS Program for more information at (313) 475-1311, ext. 196. The Women's Health Center would like to know about your interests and needs for future services. Call us with your ideas and suggestions.

Conveniently located at I-94 & M52, 15 miles west of Ann Arbor.

Women's Health Center
Chelsea Community Hospital
775 South Main Street
Chelsea, MI 48118-1399
(313) 475-1311 ext 196

Sen. Riegle Pushes Historic Place Listing For Chelsea Depot

U. S. Senator Donald S. Riegle, Jr., has taken action to support the Chelsea Depot Association in its efforts to obtain federal recognition of the depot in the National Register of Historic Places. Since all such applications must first be approved by state historical authorities, Riegle has addressed a letter to Robert Christensen, historic preservation co-ordinator for the State of Michigan. In his letter, Senator Riegle said:

"I would like to call your attention to an application submitted to your office by the Chelsea Depot Association, Inc., nominating Chelsea's depot for the National Register of Historic Places.

"This depot is worthy of designation for many reasons. The citizens of Chelsea plan to make this landmark a living symbol of their community. I support their efforts to preserve a small part of Chelsea's early history. Those who visit the renovated depot will gain a greater understanding of the role the railroad played in the development of their community and the Midwest. Therefore, I urge you to provide this application with your full consideration.

"I would appreciate being notified of your decision in this matter and request that you forward all information about their application to my Community Development Assistant, Jim Jones, in my Central Regional Office in Lansing.

"Thank you for your time and assistance."

Don Riegle also sent a copy of his Christensen letter to the Chelsea Depot Association, saying,



The nose cleans, warms and humidifies over 500 cubic feet of air every day.

ing, "Please be assured that we will do all we can to be of assistance in this matter."

U. S. Senator Carl Levin initiated the historic recognition process in 1985 by urging Christensen to send application forms to the Chelsea Depot Association.

"Representative Carl Pursell will always be gratefully remembered," a Depot Association officer stated, "for his assistance in encouraging Amtrak to make an outright sale of the depot to the Chelsea community."

North Lake Church Sets Date For Egg Supper

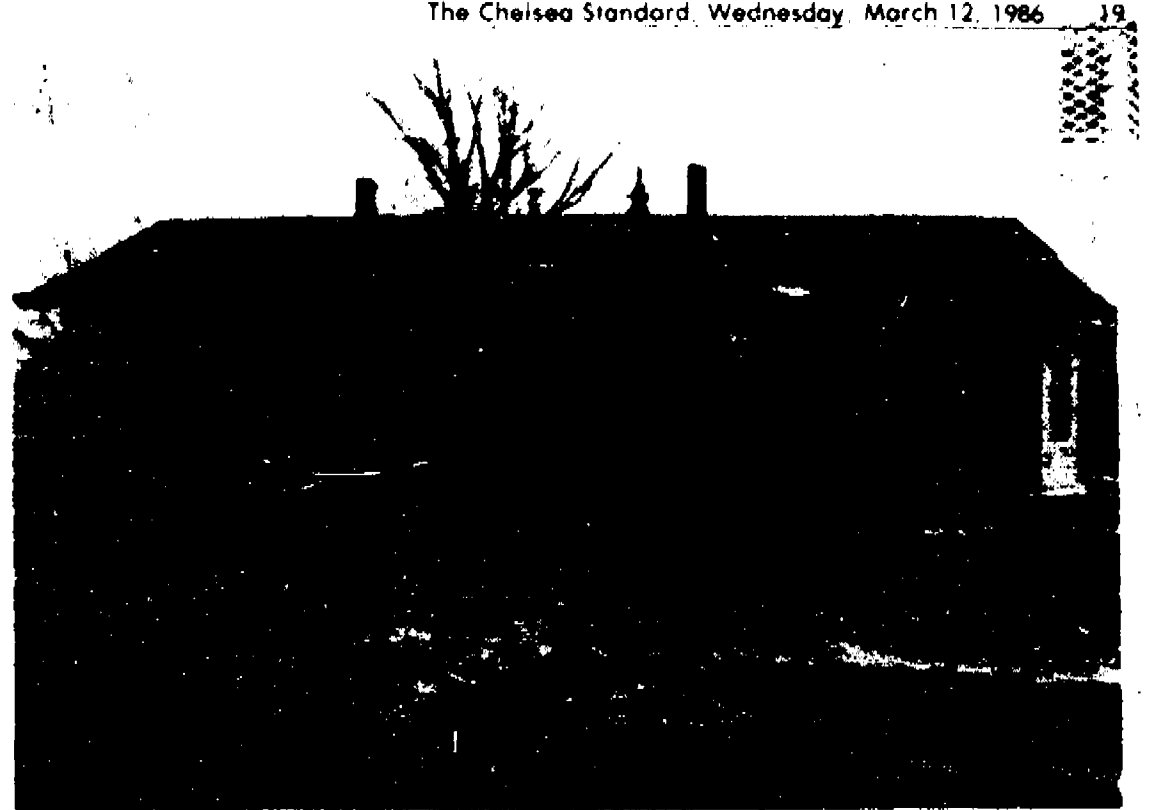
North Lake United Methodist church will be holding its 118th annual Egg Supper on Friday, March 21, from 5 to 7 p.m.

This Easter season custom at the local church dates back to 1878 when the first supper was held at a member's house. The event switched to different members' homes each year after that. In recent years the public has been invited to the Egg Supper which is now held in the Church Fellowship Hall.

This year the Egg Supper, as well as all other North Lake church activities, will have an extra meaning to them as it is the church's sesquicentennial year. The Chelsea area's oldest church was founded in 1836 by families in the North Lake area. Descendants of these early founding families are members of the church today.

The present church building was constructed in 1885, 10 years before the first Egg Supper.

The Rev. Sondra Willabee invites everyone to stop by for a delicious meal, visit the historic church and help ring in its 150th year.



PROFESSIONAL REPAINTING OF THE original colors for all Michigan Central stations DEPOT is expected to start in April, beginning with a thorough removal of paint layers applied from 1930 to 1964. Researchers believe that the paint removal process will tell.

Depot Restoration Will Start As Soon As Weather Permits

Plans for the restoration of the Chelsea rail depot provide for the beginning of work on the exterior as soon as weather permits in April.

Repairs of woodwork and the southeast corner of its foundation will be completed and roof repairs will also be made as needed. Doors will be refinished and rehung with new hardware. All windows will be reglazed with panels of double pane insulating glass.

The outside paint will be chemically or mechanically removed; then, starting from the bare wood, the building will be repainted in its original Michigan Central colors.

Enough money is on hand, or pledged, to see that this long desired civic ambition—a restored exterior—is realized

before the end of the summer. These actions were described by Will Connelly, president of the Chelsea Depot Association, in a report to the Chelsea Historical Society at its March meeting. "Each day we receive additional contribution checks in the mail. If they just keep coming in during the next few weeks, restoration of the exterior becomes a certainty. That is our first goal and we will possess an attractive and distinctive monument to the passenger railroad history of our community."

"Rehabilitating the interior," Connelly continued, "is still in the planning stage by a joint committee of the depot association and the historical society. This involves the decor of the two principal rooms—one a historical museum and the other a public

meeting place—plus a stationmaster's office which may include a kitchen counter at the rear. Also involved will be installation of a new electrical system, flooring, heating, cooling and plumbing."

Two or three local contractors for various phases of the reconstruction have been invited to submit bids. When the bids are in, the depot association will be able to establish a schedule of priorities for work phases and step-by-step schedules for additional fund raising.

"By December 1987, I believe we can plan to hold a gala community Christmas party in a beautiful, warm and lovable depot," Connelly concluded.

Subscribe to The Chelsea Standard!

SUPPORTING THE CHELSEA DEPOT for recognition in the National Register of Historic Places, U. S. Senator Don Riegle is assisting in the appeal of the depot association to state and federal historical authorities.

Girl Scouts Delivering Cookies

If you have a sweet tooth, this is probably one of your favorite times of the year.

That's because Chelsea's 131 girl scouts are distributing their cookies in the area this week. The 13 troops picked up the cookies last Thursday.

The girls will also be conducting direct sales this Saturday at

the main office of Chelsea State Bank, and at Polly's Market, beginning at 9 a.m.

"People are usually pretty generous at those direct sales," said Linda Dyer, who's co-ordinating the Chelsea distribution. "Usually when someone sees the girls in their uniforms, they'll buy at least a box."

The Wolverine Auto/Truck Plaza

is now offering

2 LARGE EGGS, TOAST & COFFEE for only -- 99¢

(Served Any Time, Any Day, Now Thru April 1st)

Also in Our Restaurant:

Beginning Saturday, March 8th and every Saturday after that from 11 a.m. to 8 p.m.

ALL-YOU-CAN-EAT SPAGHETTI

Served with meat sauce, garlic bread, tossed salad and beverage

FOR ONLY \$2.99

We're looking for a few good employees

We offer full-time schedules, good wages, excellent benefits, and great working conditions.

Apply Anytime, day or night!

The Wolverine Auto/Truck Plaza is truly a surprise!

In Our Gift Shop:

HUGE SALE DAKOTA JEANS

\$13⁹⁹ 1 pr. 2 pr. \$20⁰⁰

The Area's Largest Selection of Electronics

CR-20V AM/FM IN-DASH CASSETTE

With a pair of 6x9 3-way 200-watt speakers

Reg. \$119.95 **NOW \$44⁹⁵**

Or Sold Individually:

RADIO \$28⁹⁵ - SPEAKERS \$19⁹⁵

COMING SOON — CARRY-OUT CHICKEN!

I-94 & BAKER RD., DEXTER - Ph. 426-3951

Michigan's Finest Auto/Truck Facility

Open 24 Hours
7 Days A Week



DAN MURPHY HAD A FEW SURPRISES for his 38th birthday on Monday, and one of them was a serenade by Chelsea High school's Contemporaries. They greeted him with "Happy Birthday," and

finished with other, less traditional birthday songs, a harmonic ribbing, of sorts. Murphy is the long-time pharmacist at Chelsea Pharmacy, and his friends were out in force on Monday.

4-H Achievement Show Scheduled March 22

Washtenaw county 4-H Youth Program annual Spring Achievement Show will be held on Saturday, March 22, at Ann Arbor Huron High school. 4-H members will exhibit and be judged in the areas of clothing, knitting, crystallizing, leathercraft, woodcraft, demonstrations and cultural arts and crafts.

Exhibits will be on display in the school cafeteria from 12 noon to 3 p.m. There will be two style shows, one from 2 to 4 p.m. and the evening program from 7:30 to 9:30 p.m. 4-H members will be modeling their clothing projects in these shows and the 4-H award winners will be announced at the evening show.

Everyone interested is invited to stop by and view the exhibits, attend the style shows and learn more about Washtenaw county 4-H programs.

Co-operative Extension Service programs are open to all regardless of race, color, creed, sex, handicap, or national origin.

The first woman Secretary of Labor and the first woman cabinet officer was Frances Perkins. She was also the first Secretary of Labor to not belong to a union and the first to have a college education, according to "Labor Firsts in America," a publication of the U. S. Department of Labor.

School Board Notes

Present at a regular meeting of the Chelsea Board of Education Monday, March 3 were Schumann, Dibs, Grass, Comeau, Feeney, Redding, Satterthwaite, superintendent Van Meer, assistant superintendent Mills, principals Williams, Stelstra, Westcott, Benedict, assistant principal Larson, community education director Rogers, special education director DeYoung, athletic director Reed, curriculum director Bissell, guests.

Meeting called to order at 8 p.m. by president Schumann. Board approved the minutes of the Feb. 17 meeting.

The board received a communication from the Washtenaw Intermediate School District advising of their search for a new superintendent. At a later date they will solicit input from the local school boards.

Deacon Richard Cesarz, president of the Chelsea Ministerial Association, submitted a letter to the board expressing concerns regarding encroachment of school activities upon Wednesday nights, which have been reserved in the community for church activities. At the board meeting of April 21, board members will renew the scheduling of activities on Wednesday nights.

Ralph Brier, transportation supervisor, was honored in general terms for his supervision of the transportation system that transports students on 30 runs approximately 1,800 miles per day. He was specifically cited by Dr. Henry DeYoung as being prominent in the consortium organization of transportation services for special education students.

Sally Rendell, a parent, spoke to the board and submitted a letter referring to the process of parental requests for certain teachers for their children. Some board members indicated that matter had been discussed in talks between board members and teachers. The board scheduled that topic for review in a work session at 7 p.m. on April 7.

Doug Dault and Peg Woerhle, of the Chelsea Community Hospital, discussed the CARE program, which is an Employee Assistance Program. They stressed the confidentiality of the program and indicated that they will be making a presentation at the various schools.

President Dale Schumann received forms for the annual evaluation of the superintendent. The president of the board will compile a composite evaluation.

Curriculum Director Laurie Bissell was present to update the board on the study skills. Using an overhead projector, she discussed certain component parts of the study skills program that have been completed to date. She expressed her appreciation for the work of the teachers.

Superintendent Van Meer discussed the legislative acts of certification for superintendents, principals and instructional administrators. He also discussed a possible change in a Senate Bill which will alter the 120-day substitute teacher law. The new bill indicates that a substitute teacher working for 120 days will have first option in that year and in the succeeding year for any vacancy in that district for which he/she holds certification.

Assistant superintendent Mills introduced a resolution to borrow approximately \$3,000,000 in anticipation of operating tax collection.

The board accepted a donation of one 1986 Dodge 600 and one 1986 Dodge 600SE from Chrysler Corporation Proving Ground. These are prototype vehicles that cannot be used on the road, nor do they have a stated value. They will be used on the driver education range.

The board accepted, with regret, the resignation of Margaret L. Koch, effective June 12, 1986. Margaret is a sixth grade bloc teacher at Beach Middle school. She has served the district for 18½ years and was honored as exemplary employee in June, 1982.

The board appointed Fred Mills as election administrator for the June 9 annual school election.

The board approved an election resolution calling for the annual school election to be held June 9.

Board secretary Anne Comeau indicated that she was very impressed with the contributions of the Chelsea teachers in the area of curriculum development and review.

Building administrators updated the board on activities that were taking place in their

Girl Scout Day Camp Needs Many Volunteers

Girl Scout Day Camp (part of Huron Valley Council) will be held at Hudson Mills Metro Park from June 16 through June 20. Registration will be held at South school in Chelsea on May 6 and Wylie Middle school in Dexter on May 8.

The week will include such activities as swimming, crafts, outdoor cooking, badge work, one overnight for Juniors and archery if an instructor can be found.

Day camp is an all voluntary program, designed to contribute to the mental, physical, social and spiritual growth of the girls, in a natural group setting.

If you would be interested in volunteering for a week of fun and personal satisfaction, please call one of the co-directors: Susan Harris at 475-1138 or Annette Anderson at 428-2513.

The following volunteers are needed: archery instructor, unit leaders and assistants, part-time or full-time health and safety director, song leaders, flag ceremony trainer, shoppers, craft directors, phone committee, certified first aiders, equipment manager and a person to make tent poles.

A lot lot will be provided the week of camp for the younger children of the volunteers working at camp. There is no cost for the lot lot.

Also needed are Cadette and Senior Scouts to help at camp.

schools. Of noted importance was Ken Larson's report that a survey of Washtenaw county schools revealed that Chelsea High school students have an average of 16 dances per year. The next highest is Dexter with eight dances; the other schools average between four and six. This is a credit to the conduct of the students of the Chelsea schools and the chaperoning by teachers, administrators and other staff members.

The board was informed that March has been designated as Reading Month by the Governor.

Meeting adjourned at 10:17 p.m.

STEVE KRAUL
CONSTRUCTION COMPANY
• Remodeling • New Building • Drywall • Painting • Wallpapering • Free estimates
475-3179

Grass Lake Choir Preparing Cantata

1986 marks the seventh year of the annual Grass Lake Community Cantata. The cantata, "Resurrection Day," by Don Wyrzten and Phil and Lynne Brower, will be presented Palm Sunday week-end.

The public's response to this musical inspiration necessitates two performances, which will be held at the Grass Lake United Methodist church, 449 E. Michigan Ave., in Grass Lake. The first performance will be held Saturday, March 22, at 7 p.m., and the second will be on Sunday, March 23, at 3 p.m.

The community choir is comprised of members of Grass Lake area churches, members of the Grass Lake school's junior and senior high choirs, and area residents who love the opportunity to participate in a mass choir.

Under new direction this year, the choir is benefiting from the teaching and conducting skills of Marge Farmer. Marge graduated from Western High school, Jackson Community College, and from Eastern Michigan University with a BS degree in music. She works at Johnston Music Co. in Jackson, where she teaches private lessons in flute, piano, organ, snare drum, and guitar. She is also the assistant director of the Jackson Cascades Chapter of the Sweet Adelines. She has performed with the Jackson Civic Theater as well as with the Clark

Lake Players, her latest performance being part of the chorus in "Cinderella." Marge is also a voice and piano student of Monte Long. She brings to the chorus a rich and varied musical background.

Behind the scenes, faithfully and skillfully co-ordinating each year's cantata is Mariene Clark.

The community cantata has evolved to the point where it is now sponsored by the Grass Lake Ministerial Association. The Association will be taping each performance, and will be selling the tapes to those who would desire a copy. The proceeds will help to fund the cantata. A free will offering will also be taken during each performance to serve as a reimbursement to the Ministerial Association. Any proceeds exceeding the actual cost, will be donated to the Grass Lake schools' music program.

Sweet News

A sugarbeet a day keeps the dentist away—maybe. Two West Germans chewed sugarbeet pulp after breakfast and lunch, brushed their teeth at night and reported clean, healthy and very white teeth. Now, 70 more Cologne School of Medicine student volunteers are trying the practice.

A potential new market for sugarbeet growers?

Country Peddler Show

The Original Folk Art Show and Sale

Lucas County
Recreational Center
Maumee, Ohio
2901 Key Street

Friday, March 21 5-9 p.m.
Saturday, March 22 10-7 p.m.
Sunday, March 23 11-5 p.m.

25 of the nation's best artisans featuring handcrafted furniture and accessories for your home. Unique and beautiful quilts, pottery, lighting, chairs, dolls, teddies and whimsical wonderful folk art. All merchandise produced in the time honored traditions of the past. Each piece individually crafted by hand.

Lucas County Recreational Center
2901 Key Street in Maumee

Admission
No admission • No children • Each Day
10:00 a.m. to 5:00 p.m. • Free will contribution
(1616) 423-2171

POMA'S PIZZA

137 Park Street, Chelsea
Ph. 475-9151

HOURS: Sun.-Thurs., 4 p.m. to 10 p.m.
Fri. & Sat., 4 p.m. to 12 a.m.

"We Knead Your Dough"

We also have thin crust pizza on request.

CLIP THIS COUPON

\$2.00 OFF
ANY LARGE or
X-LARGE PIZZA

(one coupon per pizza)

Offer good thru March 25, 1986
at Poma's Pizza, Chelsea

At Herrick Memorial Hospital

WE CARE

That is why we designed our cardiology services to meet YOUR needs.

WE OFFER

- Intensive Coronary Care Services with Qualified, Experienced R.N.'s
- Telemetry Monitoring
- Cardiac Rehabilitation in-patient and out-patient
- Graded Exercise Testing (Stress Test)
- Thallium and MUGA Scans
- 2 D & 3 D Echocardiography
- Pacemaker Services
- Streptokinase
- Drug Therapy

Large in Scope & Service,
People Sized To Serve You.

HERRICK MEMORIAL HOSPITAL

500 E. Pottawatomie St.
Tecomseh, Michigan 49286
423-2141

COVENANT CHURCH

Corner of Old US-12 and Freer Road

BEEF DINNER

Friday, March 14

Serving 5, 6 and 7 p.m.

Adults \$5.00 Children under 12, \$2.50

Tickets available at Seltz's Tavern, Jack and Sons Barber Shop and any Covenant Church member.



Choosing the right home mortgage takes time and planning.

If you're not quite ready to purchase a home, we suggest you increase your down payment funds, in one of our high interest savings programs, until you are.

When you're ready to purchase or have a home built, you can count on our lending experts to design a home mortgage loan within your budget. We've helped area folks for years with home financing.

Come in and discuss home mortgage details with us, today.

See us for your
Home Mortgage Loan.

CSB CHELSEA
STATE
BANK

Branch Office
1010 S. Main

Phone
475-1355

Main Office
305 S. Main

+ AREA DEATHS +

Amanda Oesterle

Chelsea
Amanda Oesterle, 73, of Chelsea, died Wednesday, March 11, at Cedar Knoll Rest Home. She was born March 25, 1912 in Chelsea, the daughter of Philip and Martha (Grasshans) Oesterle.

Survivors include a daughter, Mrs. Cecil (Myra) Gady, of Milwaukie; one sister, Clara Mae Oesterle, of Waterloo; seven grandchildren and one great-grandchild.

She had been a Chelsea resident her entire life. She was a member of the Waterloo United Methodist church, and had worked at Schurman's Restaurant for many years.

Funeral services were held Monday, March 10, at Nie-Fontana Funeral Home, Ann Arbor. Burial was in Vermont Cemetery.

Thomas M. Schaff

Athens, Ga.
(Formerly of Chelsea)

Thomas M. Schaff, Athens, Ga., formerly of Chelsea, age 19, died Wednesday, March 5, in Athens, as a result of an armed robbery at his place of employment.

He was born Jan. 4, 1967 in Ann Arbor, the son of Fred and Paula (Romine) Schaff. Tom was a resident of Chelsea until 1981 when he moved with his family to Athens.

He was graduated from Cedar Shoals High school in 1985 and was employed at the North Avenue Self Service Store in Athens, Ga.

Surviving are his mother and father, Paula and Fred Schaff of Tallahassee, Fla.; a brother, Kevin at home; his paternal grandparents, Fred and Mavis Schaff of Stockbridge; his maternal grandmother, Elnora Canine of Athens, Ga.; three uncles, Charles, Randy and James Remine all of Georgia; and three aunts, Rhonda Thompson of Cass City, Karen Meyers of Ann Arbor, and Joyce Spencer of Chelsea. Also surviving are several cousins.

Funeral services were held Saturday, March 8, at 2 p.m. from the Staffan-Mitchell Funeral Home with the Rev. Erwin R. Koch of St. Paul United Church of Christ officiating. Burial was in Oak Grove Cemetery, Chelsea.

Expressions of sympathy may be made to St. Louis School, Chelsea. Envelopes are available at the funeral home.

U. S. retail sales of passenger cars in 1984 totaled 10.4 million units—8 million domestic cars and 2.4 million imports. Total retail sales of commercial vehicles were 4.1 million units—up 31 percent from 1983's 3.1 million.

Hazel Kaercher

Formerly 215 Park St.
Chelsea

Hazel Leulla Kaercher, 76, formerly of 215 Park St., Chelsea, died Saturday, March 8, at Chelsea Community Hospital. She had been a resident of the Chelsea United Methodist Home.

She was born March 25, 1909 in Saline, the daughter of Irving and Clara (Stabler) Tripp. On Oct. 18, 1930 she married James Allyn Kaercher in Detroit, and he survives.

Other survivors include two sons and daughters-in-law, David Lee and Helen, of Chelsea, and Allyn James and Madeline, of Pinckney; one sister, Mrs. Margaret (Peg) Roffee, of Ann Arbor; five grandchildren, Cindy, Sheri, Russell, Peggy and Amy; and two great-grandchildren, Melissa and Lindsey.

Mrs. Kaercher was a member of the First Congregational church of Chelsea, and a life member of Ann Arbor Chapter No. 122 Order of the Eastern Star.

Funeral services were held Monday, March 10 at the Cole-Burghardt Funeral Chapel, with the Rev. John W. Gibbon of the First Congregational church, officiating. Order of the Eastern Star services were held Sunday at the funeral home. Burial was in Bethlehem Cemetery, Ann Arbor.

Memorial contributions may be made to the First Congregational church.

Charlotte A. Fitzsimmons

13860 North Lake Rd.
Gregory

Charlotte A. Fitzsimmons, 13860 North Lake Rd., Gregory, age 51, died following a long illness Wednesday, March 5, at McPherson Community Hospital, Howell.

She was born June 2, 1934 in Chicago, Ill., the daughter of Harry Padgett and Martha Voss. She was married Sept. 25, 1952, to Louis Fitzsimmons who survives.

Surviving, in addition to her husband, are three sons, Steve of Dexter, John of Unadilla, Jim of Chelsea; one daughter, Donna, of Jackson; three grandchildren; two sisters, Pat Ousicki, Darlene Schaffert, both of Brighton; and four brothers, Harry of California, Alex of Rowan, Joseph of Fruitport, Christopher of Montague.

Cremation has taken place. Arrangements were made by Shelters Funeral Home, Pinckney.

Traffic fatalities increased in 1984 to 45,800, up 1,400 from 1983. However, the death rate of 2.68 per 100 million vehicle miles was a record low.

Kathryn Lancaster

1881 Francisco Rd.
Grass Lake

Kathryn Anne Lancaster, 1881 Francisco Rd., Grass Lake, died shortly after birth, Wednesday, March 5 at St. Joseph Mercy Hospital.

She was the daughter of Daniel J. and Theresa M. (Ahrens) Lancaster.

Other survivors include her paternal grandparents, Mr. and Mrs. Thomas B. Lancaster, Chelsea; maternal grandparents, Mr. and Mrs. Gene Ahrens, Grass Lake; maternal great-grandmother, Theresa Svatko; her sister, Kimberly, at home; and several aunts and uncles.

Private services were held, with burial in Oak Grove Cemetery, with the Rev. Larry Nichols, of the Waterloo Village United Methodist church, officiating.

Memorial contributions may be made to the Waterloo Village United Methodist church.

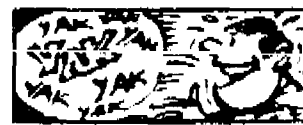
Arrangements were handled by the Cole-Burghardt Funeral Chapel.



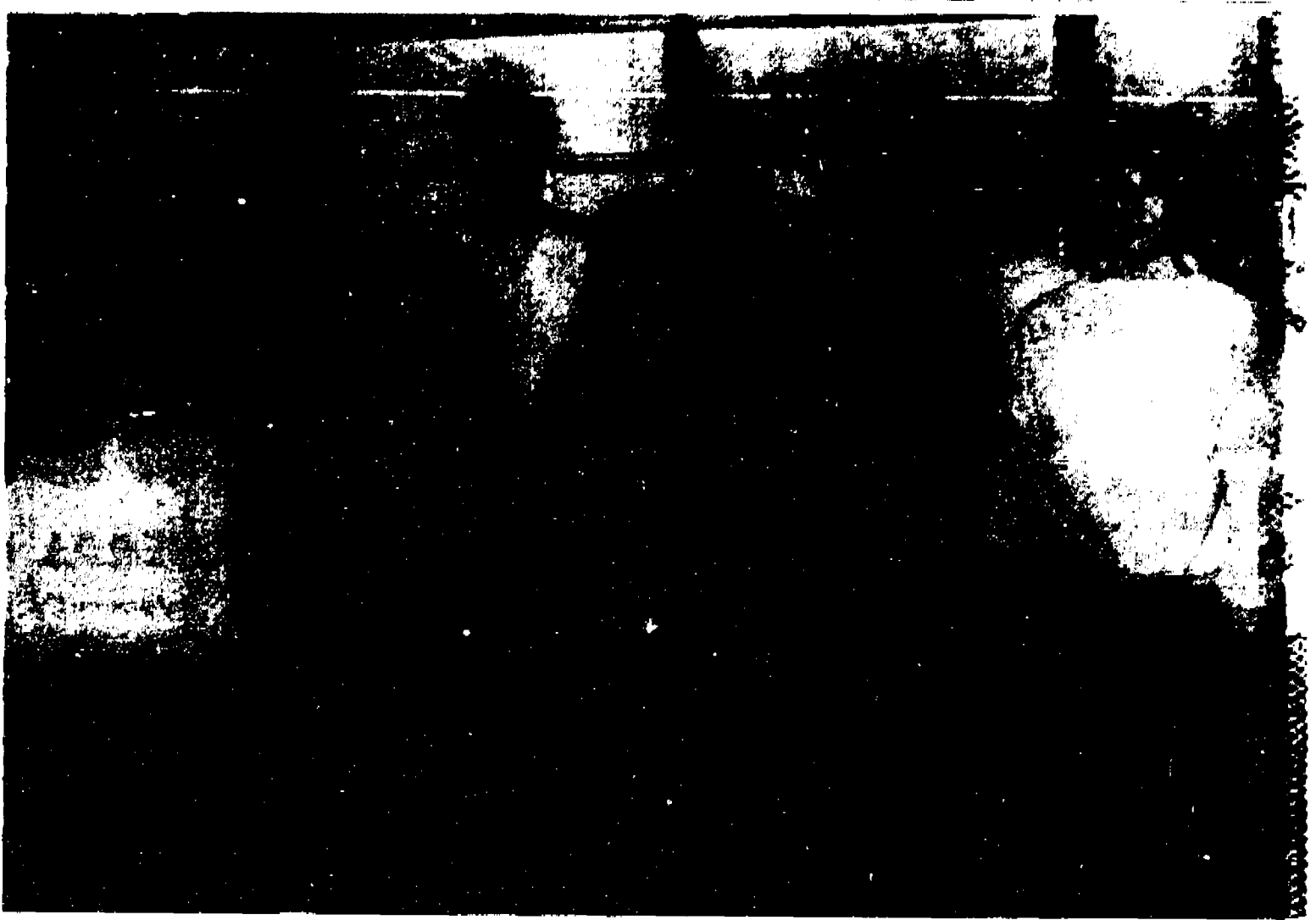
A daughter, Ashley Elizabeth, March 2, to Kurt and Karen (Romine) Meyer of Ann Arbor. Grandparents are Mr. and Mrs. Donald Meyer of Ann Arbor, and Mrs. Elnora Canine of Winterville, Ga., formerly of Chelsea. Great-grandmother is Mrs. Glen K. Rogers of Cheyenne, Wyo.

A daughter, Sara Marie, Sunday, Jan. 26 to Dan and Kathy Heydlauff of Colorado Springs, Colo., formerly of Chelsea. Maternal grandparents are Dave and Toni Fairbanks of Scottsdale, Ariz. formerly of Chelsea. Paternal grandparents are Jerry and Shirley Heydlauff of Dexter; great-grandparents are Christine Heydlauff of Chelsea and Conrad and Emma Lee Turner of Jackson. Sara has a brother Christopher who is 7½.

A son, John Daniel Walker, Thursday, Feb. 13 to Gary and Mary Erskine of Chelsea. Grandparents are Walter and Velma French of Chelsea, and Jack and Geneva Erskine of Moran, J. D. has a brother, David, and sister, Sheri Jo. Great-grandmother is Victoria Baker of Chelsea.



The record for non-stop talking, held by Kapile Kumarasingha in Sri Lanka, and set June 12 to 24, 1981, is 159 hours.



CHAMPION SPELLERS are these youngsters who were the finalists in the Beach school spelling bee last Thursday. In the front row, from left, are sixth graders Heather Kendrick and Chris Taylor, seventh grader Tom White, sixth grader Matt Pacific, and eighth

grader Chris Sawicki. In the back row, from left, are seventh graders Kate Dillworth and Jason Jarvis, eighth grader Mark Chastice, seventh grader Lisa Ellis, and eighth grader Wendy Estey.



SIXTH GRADER Christina Taylor beat out nine other finalists to win the school-wide Beach school spelling bee last week. Christina won on the word, "opaque." She had to spell nearly 10 words right to win the contest.

Senior Center Will Observe St. Patrick's Day

'Twill be the wearin' of the Green, singing of Irish tunes, and feasting on corned beef and cabbage, Monday, March 17, at the Senior Nutrition Site in Chelsea's North school. "Seniors wearin' their green are traditionally served lunch first," reminded site director Arlene Larson.

Leprechaun punch will be served at the St. Patrick's Day Party, and each senior attending will have a chance at the Leprechaun Pot-o'-Gold.

"You can't eat a piece of chocolate and frown at the same time!"—Old chocolate saying.

Correction . . .

On the front page of last week's edition of The Chelsea Standard appeared a short story concerning dangers at the Washtenaw County Road Commission lot on W. Middle St. Apparently, we were a little too melodramatic about the incident.

The story indicated that children had dug a dangerous hole in a pile of frozen limestone in the lot, and that police were worried a child might be seriously hurt or injured should the pile cave in. In reality, commission workers had dug the hole with a piece of machinery. Commission officials say that as far as they know, no children were anywhere near the limestone.

Casanova used chocolate as an inducement for romance.

TOWER MART PARTY STORE

528 N. Main Ph. 475-9270

COUNTRY-FRESH EGGS

HOT SANDWICHES

PEPSI-COLA SPECIAL

2-LITER BOTTLE... \$1.59 plus deposit

8 ^{pac} 1/2-liter bottles

\$1.99

plus deposit

6 ^{pac} 12-oz. cans

\$2.09

plus deposit

Offer good thru March 26, 1986

EVERY WED., 30' SINGLES ON ALL 1/2 LITER PEPSI PRODUCTS

Subscribe to The Chelsea Standard

BATTERIES!

Buy 10 - Get the 11th pack free.
Activator (13-675-312-41) Ray O Vac
Yes, we will mail you your batteries!

CHELSEA HEARING AID CENTRE

• Hearing Aids • Batteries • Accessories •

35 Chestnut Dr. • Suite A
313-475-9189 Chelsea, Mich.
Telephone Secretary 648-4968
We're in your Target Directory
Open Saturday, 9:30 to 2. Evenings by Appointment.
We accept third party billing

WE'RE OPEN 24 HOURS 7 DAYS/WEEK

For Your Inspection

Our "BIG LOT" is ALWAYS OPEN for you to browse (even after normal business hours). No salesmen, no fences — no chains — no blocked off driveways. Look them over at your convenience, then come back during normal business hours to make "YOUR BEST DEAL".

DON POPPENGGER - MGR.

Only minutes away. Located 1/2 mile north off I-94, Exit 159. Always a great selection. Warranties included with or available on most vehicles.

Always over 40 to choose from

... CARS/TRUCKS ...

1978 FORD LTD II, excellent transportation	\$1,695
1979 VW RABBIT — front wheel drive	\$1,695
1980 DODGE Aspen, compact automatic	\$2,495
1980 VW RABBIT, beautiful	\$2,995
1981 ESCORT Wagon, automatic trans	\$2,995
1977 CADILLAC Coupe DeVille, lots of luxury	\$2,995
1981 GMC PICKUP, C1500 series	\$3,995
1982 MERCURY LINN — Sporty 2-seater	\$4,495
1983 MERCURY Lynx 4-dr., beautiful condition	\$4,495
1984 FORD Escort 2-dr., locally owned	\$4,495
1982 GRANDA WAGON, family size	\$4,495
1983 FORD Escort Wagon, auto with air	\$4,995
1983 FORD F-150 Pickup, priced cheap	\$4,995
1983 BUICK Skyhawk wagon, perfect size	\$5,495
1984 FORD Escort 4-dr., only 11,000 miles	\$5,995
1984 FORD F-150 Super Cab, automatic	\$7,495
1985 DODGE Aries, automatic with air	\$7,495
1983 MERCURY Grand Marquis 4-dr., choose from 2	\$8,995
1985 FORD LTD 4-dr., 6 cyl. with extras	\$9,995
1985 FORD Ranger XL 4x4 with air	\$9,995
1983 OLDS Regency 98 4-dr., 26,000 mi.	\$9,995
1984 COUGAR LS—fac. executive	\$9,995
1985 MERCURY XR4Ti, luxury sports car	\$14,400
1985 LINCOLN Town car, red & ready	\$16,495
1984 LINCOLN Continental, 14,000 miles	\$17,495

☺ HAVE A GREAT DAY! ☺

PALMER

OPEN: Mon. and Thurs 'til 8:30 p.m.
Saturday 'til 12:30 p.m.
In Washtenaw County since April 15th, 1912

CHELSEA 475-1800

Celebrate St Patrick's Weekend at the CHELSEA WOODSHED

with these LEPRECHAUN specials:

March 15, 16, 17—GREEN BEER

Saturday March 15—REUBEN OMELET

—St Patrick's Day—

Lunch and Dinner Special—
cornbeef and cabbage

And for 1.50 we'll give you an IRISH KISS



THE DRIVER EDUCATION PROGRAM at Chelsea High school will be much richer this summer after the donation of two prototype 1988 Dodge 600 automobiles by the Chrysler Proving Grounds. Assistant Principal Ken Larson, who teaches as director of the driver education program, shows off the donation, worth about \$18,000 each, according to Elmer Kiel, one of the people

who co-ordinated the gift at Chrysler. Because they are prototypes, they have no identification number and no title—so they can't be driven on the street. However, they can be driven on school property, on the driver education obstacle course, and they can be used in auto shop class. The proving grounds have donated 12 such automobiles this year, Kiel said.

ZOA'S LOG CABIN LUNCH
2714 Oak Lake Rd., Waukegan
OPENING
Fri., March 14th
Featuring
All-You-Can-Eat Ocean Porch
Every Friday

Air stored in telescopes and brass buttons for hundreds of years may help researchers understand the "greenhouse effect" by which the earth's temperature rises, reports International Wildlife magazine. Scientists hoped that by measuring the carbon dioxide level in the antique air, they can better understand how changing levels have influenced global warming over centuries.

SCHOOL LUNCH MENU

Weeks of March 12-March 21
Wednesday, March 12—
Cheesburger on bun, potato chips, carrot and celery sticks, fresh fruit, milk.

Thursday, March 13—
Macaroni and cheese, ham patty, mixed vegetables, bagel with butter, ice juice, milk.

Friday, March 14—Fish sandwich, oven brown potatoes, cole slaw, crushed pineapple, milk.
Monday, March 17—Hot dog on bun, french fries, dill pickles, peach half, milk.

Tuesday, March 18—Boneless Rib-E-Q, scalloped potatoes, buttered peas, dinner roll and butter, fruit compote, milk.

Wednesday, March 19—
Chicken fried patty on bun, baked beans, vegetable sticks, sherbet, milk.

Thursday, March 20—Hot meat sandwich with gravy, buttered corn, applesauce, milk.

Friday, March 21—Cheese pizza, tossed salad with dressing, fresh fruit, cookie, milk.

Conventional wisdom holds that the African drought is caused by the whims of nature, yet International Wildlife magazine reports some climate experts believe that man may be the culprit. By rapidly destroying African rain forests and woodlands, water runoff has increased. This, in turn, reduces the chances for water evaporation which forms the clouds that bring rain.

Shade Trees Offered Free for Spring Planting

The National Arbor Day Foundation is giving 10 free shade trees to people who join the non-profit Foundation during March, 1986.

A Sugar Maple, Weeping Willow, Red Oak, Green Ash, Thornless Honeylocust, Pin Oak, Silver Maple, Tuliptree, European Mountainash, and Red

Maple tree will be given as part of the Foundation's campaign to encourage tree planting.

These trees were selected because they provide flowers, berries and nuts, in addition to shade and beauty, according to John Rosenow, the Foundation's executive director.

The Foundation will give the 10

free trees to members contributing \$10 during March. The six-to-twelve inch trees will be shipped this spring between

March 1 and May 31 when conditions are right for planting. They will be sent with enclosed planting instructions, and are guaranteed to grow or they will

be replaced free by the Foundation.

To become a member of the Foundation and to receive the free trees, a \$10 membership contribution should be sent to Ten Shade Trees, National Arbor Day Foundation, 100 Arbor Ave., Nebraska City, Neb. 68410, by March 31.

USED SPECIALS

GENERAL ELECTRIC REFRIGERATOR \$395
Almond. Like New. 1-Yr. Warranty.

AMANA UPRIGHT FREEZER \$275
16 cu. ft. 1-Yr. Warranty.

MAYTAG AUTO WASHER \$150

G.E. ELECTRIC DRYER \$135

MAYTAG GAS DRYER \$175

GENERAL ELECTRIC 30" \$150
"P7" Range

MAGNAVOX 19" COLOR TV \$200
With stand. 1-Yr. Pix Tube Warranty.

For Sales & Service
HEYDLAUFF'S
VISA

TIC TAC TOE
Michigan's New
Instant Game
Today

INSTANT LOTTERY TICKETS \$1 ea.

LOSER'S DRAWING EVERY SATURDAY
Weekly Drawing... 5 Free Tickets
Monthly Drawing... 10 Free Tickets

CAVANAUGH LAKE STORE
143 CAVANAUGH LAKE RD.
OPEN: 6 a.m.-8 p.m., M-Th/6 a.m.-9 p.m., F/
7 a.m.-9 p.m., Sat/7 a.m.-7 p.m., Sun.

Wheel Horse Power

ONLY \$1999 SAVE \$200
with 36" r.d. mower

FEATURES INCLUDE:
8 HP Kohler engine • 8-speed Uni-Drive™ transaxle • No-tool Tach-a-matic™ hitch system • Manual attachment lever • Structural steel frame • Pinion & sector steering • Sealed beam headlights • Cast-iron front axle • Greasable spindles

Model 308-8

8 different models and horsepower
ON SALE AT SPECIAL PRE-SEASON PRICES
Put one on lay-away now!

GAMBLES
110 N. Main, Chelsea 475-7472

Open Daily 8:30 to 5:30
Open Monday & Friday 8:30 to 5:30

CHELSEA HYDRAULICS
is
OPEN FOR BUSINESS
FOR ALL YOUR HYDRAULIC NEEDS

We replace Hydraulic Hose and Fittings,
Re-Pack Cylinders, Repair Valves and Pumps.

WE WILL REPAIR ALL HYDRAULIC SYSTEMS,
For Example Those Used on:
SNOW PLOWS — GARBAGE TRUCKS
FARM EQUIPMENT — CONSTRUCTION MACHINERY
FACTORY MACHINERY

QUALITY WORK FAST SERVICE REASONABLE RATES
Available floor space to work on any size vehicle

Chelsea Hydraulics is owned and operated by
Henry Risner and Dave Clark

PH. 475-2529
LOCATED AT 13206 LUICK DRIVE, CHELSEA

OPEN 8:00 a.m. to 5:00 p.m. Mon.-Fri., 9:00 a.m.-1:00 p.m. Sat.